

## SPA PACKAGES

### **JET LAG REVIVAL 120 MINUTES THB 2,100 PER PERSON**

Getting here is easy but recovery is a little more difficult! Let us assist and guide you to fully recuperate that much quicker! a 60 minutes stress relief massage will help eliminate the body aches and pains followed by a 60 minutes resurgence renewal facial treatment.

### **HER & HIM EXPERIENCE 180 MINUTES THB 3,800 PER PERSON**

The ultimate in top to toe pamper. Start your journey with a choice of body scrub 30 minutes and 30 minutes floral bath, a choice of 60 minutes massage, followed by 60 minutes mini facial treatment. Be prepared to feel pampered and very special from top to toe.

### **SWISSOTEL SUMMER DAY 180 MINUTES THB 3,000 PER PERSON**

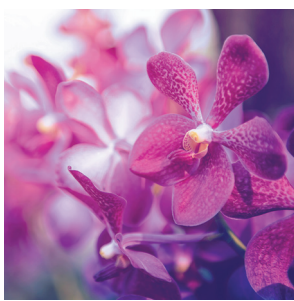
Restore and protect your skin after a tropical day in the sun and heat. The treatment starts with a choice of aloe vera wrap 60 minutes, followed by an aromatherapy massage 90 minutes. Complete your experience with a luxurious after sun facial and get your summer skin glow.

**Serenity Day Spa is located on 2nd floor**

Opening hours 10.00 a.m – 8.00 p.m. For enquires & reservations please dial 0 or 3026

**Swissôtel Resort Phuket Kamala Beach** [www.swissotel.com/hotels/phuket](http://www.swissotel.com/hotels/phuket)

100/10 Moo 3, Kamala Beach, Kathu, Phuket 83150, Thailand Tel: +66 (0)76 303 000 Fax: +66 (0)76 303 003



## FACIAL TREATMENT

### RESURGENCE RENEWAL 60 MINUTES THB 1,090 PER PERSON

Revive your luminous glow, with our most indulgent facial luxurious and lasting hydration restores suppleness, texture and tone. After one treatment you'll instantly unveil a more youthful skin.

### RENEWAL BAR

Steam or Sauna 30 minutes THB 700 per person

Flora milk bath 30 minutes THB 700 per person

### SWISSOTEL KIDS SPA TREATS

Kids Massage 30/60 minutes THB 400/700 per person

Serenity Day Spa is located on 2nd floor

Opening hours 10.00 a.m – 8.00 p.m. For enquires & reservations please dial 0 or 3026

Swissôtel Resort Phuket Kamala Beach [www.swissotel.com/hotels/phuket](http://www.swissotel.com/hotels/phuket)

100/10 Moo 3, Kamala Beach, Kathu, Phuket 83150, Thailand Tel: +66 (0)76 303 000 Fax: +66 (0)76 303 003





## BODY MASSAGE

### **Hot oil massage 60/90/120 minutes THB1,400/1,800/2,100 PER PERSON**

Hot oil massage is thought to help by reducing tension and swelling in the muscles and help to tone and condition them, to improve the condition of the hair and the skin, to prevent premature aging and also for therapeutic uses such as to improve sleep, for controlling arthritis, muscle atrophy for itchy skin and so on.

### **The Beet Down massage 60/90/120 minutes THB 1,400/1,800/2,100 PER PERSON**

A Western massage using our special blended essential oil that address specific sports related needs which incorporates Swedish massage cross-fiber and tapotement, all culminating to enhance performance, to promote healing post or sport maintenance.

### **Swedish Massage 60/90/120 minutes THB 1,300/1,700/2,000 PER PERSON**

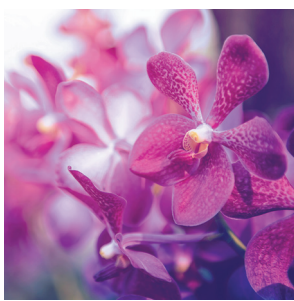
A combination of Eastern and Western massage techniques to reduce the muscle tension and revive the body with positive energy. A traditional yet classic full body massage resulting in an all – over “feel good” sensation.

**Serenity Day Spa is located on 2nd floor**

Opening hours 10.00 a.m – 8.00 p.m. For enquires & reservations please dial 0 or 3026

**Swissôtel Resort Phuket Kamala Beach [www.swissotel.com/hotels/phuket](http://www.swissotel.com/hotels/phuket)**

100/10 Moo 3, Kamala Beach, Kathu, Phuket 83150, Thailand Tel: +66 (0)76 303 000 Fax: +66 (0)76 303 003



## BODY MASSAGE

### **Back, Neck, Shoulder massage 30/60 minutes THB 700/1,000 PER PERSON**

Relax and unwind with this very specific treatment especially designed to soothe away all of muscle stress and tension from around back, shoulder and neck areas. Feel the remarkable difference from the magical touch. An excellent treatment either before or after travel.

### **Body polish 60 THB 1,200 PER PERSON**

(Tamarind, Deluxe coffee and Lavender sea salt)

Our specifically designed exfoliation treatment using natural products will leave you feeling revitalized, invigorated with a glowing healthy skin.

### **After sun soother 30/60 minutes THB 800/1,400 PER PERSON**

Ease the sting of a strenuous day of sunbathing with this mollifying and pleasant treatment, using aloe gel which will assist in maintaining that longer lasting healthy suntan.

**Serenity Day Spa is located on 2nd floor**

Opening hours 10.00 a.m – 8.00 p.m. For enquires & reservations please dial 0 or 3026

**Swissôtel Resort Phuket Kamala Beach [www.swissotel.com/hotels/phuket](http://www.swissotel.com/hotels/phuket)**

100/10 Moo 3, Kamala Beach, Kathu, Phuket 83150, Thailand Tel: +66 (0)76 303 000 Fax: +66 (0)76 303 003





## TRADITIONAL THAI TREATMENT

### **Thai massage 60/90/120 minutes THB 900/1,200/1,400 PER PERSON**

The acupressure massage combined with gentle yoga stretching techniques to harmonize the body loosen blockages and improve the flexibility. Far beyond pampering and relax. This treatment will truly reawaken your body's energy flow and facilitate the reconnection of body, mind and soul.

### **Oriental Foot remedy massage 30/60 minutes THB 600/1,000 PER PERSON**

A most therapeutically effective massage of the feet commenced with a flower footbath and exfoliation, moving onto the reflex points of the feet, which correspond, to every organ and gland in the body. Through the feet and acupressure, the autonomic nervous system, the lymphatic and circulation system are affected. It aids in the stimulation of the body's own healing process.

### **Thai Herbal compress massage 60/90/120 minutes THB 1,400/1,700/2,100 PER PERSON**

The Thai Herbal Ball compress technique offers several potential health benefits: it induces deep relaxation, relieves stress and fatigue, boosts both emotional and physical well-being, assists alignment and postural integrity of the body, improves circulation of blood and lymph and stimulates the internal organs.

**Serenity Day Spa is located on 2nd floor**

Opening hours 10.00 a.m – 8.00 p.m. For enquires & reservations please dial 0 or 3026

**Swissôtel Resort Phuket Kamala Beach [www.swissotel.com/hotels/phuket](http://www.swissotel.com/hotels/phuket)**

100/10 Moo 3, Kamala Beach, Kathu, Phuket 83150, Thailand Tel: +66 (0)76 303 000 Fax: +66 (0)76 303 003





## NAIL CARE TREATMENT

### **Deluxe Manicure 60 minutes THB 700 PER PERSON**

The standard yet definitive manicure experience comprises of a reviving exfoliation, nail filling and shaping, cuticle trim, refreshing hand and lower arm massage moisturizing and nail lacquer application to give you the ultimate and complete manicure.

### **Deluxe Pedicure 60 minutes THB 900 PER PERSON**

The standard but perfect experience comprises of a revitalizing flower foot bath & deep cleaning exfoliation, nail filling shaping, cuticle trim, soothing foot and lower leg massage moisturizing and nail lacquer application to give you the absolute and exclusive pedicure.

### **Deluxe Spa Cure 120 minutes THB 1,400 PER PERSON**

The perfect hand, foot and nail experience combining both of the exclusive spa manicure and pedicure treatments.

### **Happy Hand & Feet 60 minutes THB 700 PER PERSON**

Recommended for children

The perfect hand, feet and nail experience combining both of the exclusive hand and feet treatment finish with the nail polish.

**Serenity Day Spa is located on 2nd floor**

Opening hours 10.00 a.m – 8.00 p.m. For enquires & reservations please dial 0 or 3026

**Swissôtel Resort Phuket Kamala Beach** [www.swissotel.com/hotels/phuket](http://www.swissotel.com/hotels/phuket)

100/10 Moo 3, Kamala Beach, Kathu, Phuket 83150, Thailand Tel: +66 (0)76 303 000 Fax: +66 (0)76 303 003