

ANNE SEMONIN
PARIS

SPA MENU

ANNE SEMONIN SPA AMBIANCE

In an elegant, soft, and cozy atmosphere, the Anne Semonin Spa offers a privileged area dedicated to beauty and well-being.

Our Spa invites you to discover the Anne Semonin treatment collection, created for clientele seeking efficiency and absolute high quality service.

Immerse yourself into the tranquil world of Anne Semonin, rediscover your senses and emerge relaxed, recharged and glowing.

L'EXPERIENCE ANNE SEMONIN

“Because each skin is unique”, every Anne Semonin programme is customized and starts with a personal interview and a diagnosis of your skin. Your beauty therapist will create your own “beauty prescription”, depending on the needs of your skin at that time, and your lifestyle.

The Anne Semonin treatment collection combines an ingenious blend of aromatic essential oils, trace elements and marine ingredients with the classic French touch and a holistic approach to treating the individual needs of your body and skin. Anne Semonin treatments are designed to be “tailor made” and will not only revitalize the skin, but energize and balance the mind and spirit, providing total relaxation.

After your spa experience, a simple Anne Semonin regime is carefully prescribed, in which the therapist will recommend how to customize products to create perfect blends for optimum efficiency. This can then be carried out at home on a daily basis.

THE PACKAGE COLLECTION

HYDRA SENSATION PACKAGE | 2 HOURS

Floral Foot Bath ~ Milky Scrub ~ Made-to-Measure Facial

Ideal to restore softness and optimal comfort, this package includes a floral Foot bath, full body Milky scrub, and concludes with a personalized Made-to-Measure facial, surging the skin with true beauty.

JETLAG REMEDY PACKAGE | 2 HOURS

Floral Foot Bath ~ Relaxing Full Body Oil Massage ~ Chioce of Miracle Eyes Treatment or Thai Massage

Our flight recovery treatment includes a Floral foot bath, full body oil massage relaxing properties to unknot muscle tension, and concludes with a refreshing, choice of full body thai massage or eye treatment brightening ice cube treatment to diminish puffiness.

HEAVENLY EXPERIENCE PACKAGE | 2 HOURS

Floral Foot Bath ~ Made-to-Measure Massage ~ Made-to-Measure Facial

Our absolute stress relieving package includes a floral Foot bath, relaxing full body Aromatherapy massage, and concludes with a personalized Made-to-Measure facial as unique as you.

DEEP TENSION PACKAGE | 2 HOURS

Floral Foot Bath ~ Back, Neck and Head Massage ~ Foot Massage

Our blissful solution to aches and pain, this package includes a floral Foot bath, Back, Neck and Shoulder oil massage, and a traditional, energy-stimulating Foot massage.

EXPERIENCE OF SIAM PACKAGE | 2 HOURS

Floral Foot Bath ~ Traditional Thai Massage ~ Foot Massage

Our welcoming package includes a floral Foot bath, traditional Thai massage will leave you feeling graceful, wonderfully stretched and relaxed all over, followed by an energy-stimulating Foot massage.

THE MASSAGE COLLECTION

GRAPE COMPRESS MASSAGE | 75 MINUTES

A revisited ancient massage technique based on linen poultices, filled with all the goodness of powerful grape seeds, natural grape essences and aromatic essential oils. Through a combination of heat, pressure and the effects of the red grape and essential oils, this gentle massage induces a profound state of physical and mental relaxation helps to banish tension and ease muscles for a unique massage experience.

CRYO BALL COOL THERAPY MASSAGE | 75 MINUTES

This cooling massage combines the action of aromatherapy and manual cryo-massage spheres to relax tight muscles in the shoulders and back, relieves tired legs syndrome, soothes skin redness after sun exposure, and provide skin tone and elasticity.

MADE-TO-MEASURE MASSAGE | 60/90/120 MINUTES

AROMA ENERGIZER | PURE REJUVENATION | VITAL DETOX | RELAX & RENEW

Choose from four unique therapies, each brilliantly combining an innovative of massage techniques and oil blends to respond to the tension in your body, giving you a moment of absolute relaxation and serenity.



DEEP TISSUE (SPORTS) MASSAGE | 60/90/120 MINUTES

Combines Swedish massage with deep tissue techniques to release chronic tension and loosen tight muscles. For the entire body, or a concentrated treatment on specific muscle groups. For the weekend warrior or the dedicated athlete.

TRADITIONAL THAI MASSAGE | 60/90 MINUTES

Various manipulations will tenderly blend and stretch your body as you lie back and feel your muscles release. This massage will leave you feeling graceful, thoroughly stretched and relaxed.

DE-STRESS BACK RELEASE MASSAGE | 30 MINUTES

An express massage using warmed aromatic oils focusing purely on the back, neck, and shoulders to relieve tension and enhance well-being.

FOOT MASSAGE | 60 MINUTES

Ancient Chinese foot massage which, by utilizing pressure points on your feet, stimulates energy, relaxes you down to the tips of your toes, and restores balance and natural healing to your body.



THE FACIAL COLLECTION

SUPER ACTIVE FACIAL | 75 MINUTES

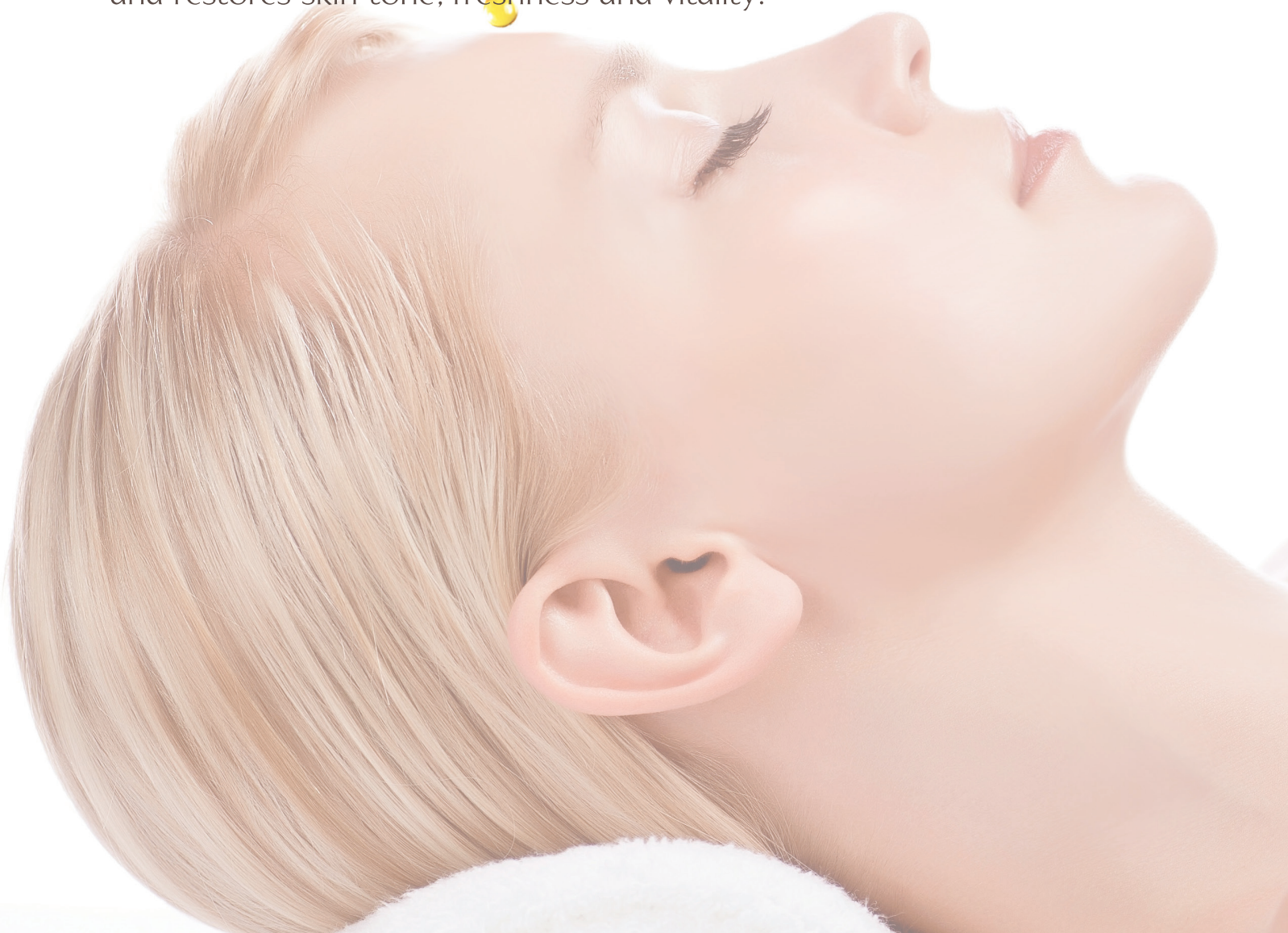
Matured skin conditions

Defy the aging process with this quintessential regenerating facial therapy. Signs of aging dissolve as the synergy of active ingredients in Anne Semonin Super Active range are gently massaged into the skin improving tone and elasticity. Maturing skins will appreciate the natural facial tension relaxing benefits of the new Super Active Cream, our natural alternative to Botox. Combined with the new Lift & Firm peel off mask made with pearl powder to lift, tone and radiate skin with a more youthful glow.

CRYOTHERAPIE AGE DEFYING FACIAL | 55 MINUTES

All skin types, aging skin conditions

This illuminating and tone-perfecting treatment combines the firming and lifting benefits of cryotherapy with the effectiveness of innovative marine ingredients for immediate radiance. Instantly erases the signs of fatigue and restores skin tone, freshness and vitality.



WHITE STAR EVEN SKIN TONE FACIAL | 55 MINUTES

Dry skin type, dehydrated skin condition with dark spots

A detoxifying treatment of the exclusive Vitamin C complex, ideal for diminishing and visibly correcting the appearance of age spots to leave the skin even, fresh, bright and radiant.

MIRACLE EYES TREATMENT | 25 MINUTES

Anti-puffiness, anti-dark circles

Refresh your gaze and smooth those contours using ice around the eyes imbued with active marine ingredients to give them a natural youthful glow.

DEEP MARINE PURIFYING FACIAL | 55 MINUTES

Oily to combination skin types

Ideal for problem, oily and combination skin, this deep cleansing and purifying treatment combines steam, traditional extraction techniques and balancing lymphatic drainage. For visibly clearer and re-oxygenated skin.

SOOTHING REPAIR FACIAL | 55 MINUTES

Sensitive skin

An extremely gentle treatment using collagen enriched with aloe vera for deep rejuvenation and comfort to soothe the most sensitive, dry or irritated skin. Ideal as an after-sun treatment or radiance booster!

HYDRA EXPRESS FACIAL | 45 MINUTES

All skin types & conditions

Does your skin need to be vitalized?

This treatment is ideal to deeply hydrate and soothe it, preventing premature ageing. A quick and effective solution to regain comfort, suppleness and glow.

NEW PRECIOUS PEARL ULTRA LIFT FACIAL | 50/75 MINUTES

This-multi stage facial uses an innovative lifting massage combined with energetic drainage facial technique that has been adored by the spa cognoscenti for over 30yrs. And concludes with the application of the cult hero Precious Pearl Ice Cube - Giving skin a truly unsurpassable youthful and health glow.

THE BODY TREATMENT COLLECTION

ANTI-OXIDANT BODY SCRUB | 45 MINUTES

Body scrub ~ moisturize

This energizing grape seed body polish will leave your skin delightfully soft and smooth, nourished to perfection. By releasing the full force of polyphenols found in seeds and skin of red grape, with an anti-oxidant power 20 times stronger than vitamin C, this is the perfect way to a healthy glowing skin.

WHITE SAND BORA BORA BODY SCRUB | 45 MINUTES

Body scrub ~ moisturize

An express exfoliation with the Anne Semonin Nude Sea Salt & White Sand body scrub, leaving skin smooth and hydrated. The warming and nourishing qualities of this scrub ensure a soothing experience and visible results.



ANTI-AGING BODY WRAP | 55 MINUTES

Body scrub ~ Body wrap ~ moisturize

This pampering body rejuvenation will regenerate the skin to its best. An invigorating body scrub is followed by a nourishing and anti-aging body mask while you drift away with a wonderfully soothing scalp massage. The naturally anti-oxidant benefits of this treatment will enhance body drainage, maximize hydration, plump up and smooth to perfection, while nurturing your body in a cloud of well-being.

HYDRA-INTENSE BODY WRAP | 55 MINUTES (Recommended for travelers)

Body scrub ~ Body wrap ~ moisturize

A wonderfully gentle treatment suitable for even the most sensitive of skins. Choose from anti-oxidant or relaxing oil blended with the delicate mineral rich Noirmoutier Sea Salt to exfoliate and nourish. An envelope of Deep Moisture Mask encases the body replenishing nutrients as it instantly heals and hydrates.



ADD-ON SPA SERVICES

JACUZZI | 30 minutes

Includes relaxing bath oil, remineralizing bath powder, and rose petals

STEAM | 30 minutes

Includes aromatic Thai herbs (available only at Pullman)



HOW TO SPA

OPENING HOURS Daily, 12.00 - 22.00 hrs.

CANCELLATION POLICY 100% charge will be applied should you cancel your appointment less than 4 hours prior to the scheduled time, the same applies to no-shows.

ADVANCE BOOKINGS We highly recommend booking your treatment in advance to ensure that your preferred time and service is available.

SPA ETIQUETTE Our spa environment is one of the tranquility and relaxation. Please respect all spa guests' right to privacy and serenity. Please switch off your mobile phones.

SPA ARRIVAL We recommend that you arrive at the Spa Reception at least 15 minutes prior to your appointment to allow for your pre-treatment procedure and enjoy your welcome refreshment. Please understand that late arrivals will not receive an extension of scheduled treatments.

SPA ATTIRE For hotel guests, you may feel more comfortable to wear the robe and slippers provided in your room. Disposable underwear will also be provided and our therapists are highly trained to drape you properly.

HEALTH CONDITIONS Please advise us of any health conditions, allergies, injuries or treatments when making your spa reservation.

LOSS OR DAMAGE We regret that we cannot be responsible for any loss or damage of personal articles of any kind brought onto the hotel premises.

SPA BOUTIQUE To continue your spa regime at home, all spa products used in treatments are available in our Spa Boutique. Gift certificates are also available.

ANNE SEMONIN

PARIS



SPA TARIFF

PACKAGES	MIN	++THB
Hydra Sensation	120	4,400
Jetlag Remedy	120	4,400
Heavenly Experience	120	4,400
Deep Tension	120	3,900
Experience of Siam	120	2,900
MASSAGES	MIN	++THB
Grape Compress massage	75	2,900
Cryo Ball Cool Therapy	75	2,900
Made-to-Measure	60/90/120	2,700/3,400/4,200
Deep Tissue (Sports)	60/90/120	2,700/3,400/4,200
Traditional Thai	60/90	1,800/2,400
De-Stress Back Release	30	1,500
Foot massage	60	1,400
Head massage	30	1,200
FACIALS	MIN	++THB
Super Active Facial	75	4,500
Cryotherapie Age Defying	55	3,900
White Star Even Skin Tone	55	3,900
Deep Marine Purifying	55	2,900
Soothing Repair	55	2,900
Hydra Express	45	2,400
Miracle Eyes Treatment	25	2,400
Lifting Pearl Treatment	50/75	2,900/3,900

PRICES ARE IN THAI BAHT AND SUBJECT TO 10% SERVICE CHARGE AND 7% GOVERNMENT TAX

SPA TARIFF

BODY THERAPY	MIN	++THB
Anti-Oxidant Body Scrub	45	2,200
White Sand BORA BORA Scrub	45	2,200
Anti-Aging Body Wrap	55	3,900
Hydra-Intense Body Wrap	55	3,900

ADD-ON SPA SERVICES	MIN	++THB
Jacuzzi per person	30	800
Steam per person (Available in Pullman only)	30	600

PRICES ARE IN THAI BAHT AND SUBJECT TO 10% SERVICE CHARGE AND 7% GOVERNMENT TAX

