

MERCURE

HOTEL

BANGKOK SUKHUMVIT 11

NEWSLETTER

OCTOBER 2025



Welcome to Mercure Bangkok Sukhumvit 11! We are excited to have you with us. From the moment you step into our lobby, the silky elegance of Thai silk will surround you, setting the tone for your stay.

At Mercure, we are all about exploring new possibilities, connecting with the local spirit, and offering you moments that inspire and elevate. Whether you are here for business or leisure, we are here to make your stay effortless.

Enjoy your silky stay with us!

Warmly,
Jirunthara Chinvaroj, Polly
Hotel Manager Mercure Bangkok Sukhumvit 11



ALL YOU CAN EAT CURRY BUFFET AT LILY FU'S

Thursdays just got tastier! Enjoy 90 minutes of unlimited South East Asian curry favorites at Lily Fu's—think Khao Soi Gai, Tom Yum Goong, Masaman Chicken, and more, served with rice, roti, and garnishes. Upgrade to Premium (+THB 200) for one serving of Confit Duck Curry and Wagyu Beef Rendang.

Price: THB 649++ per person
(Premium upgrade +THB 200 per person)
Date: October 1 – 31, 2025
Time: Thursdays | 5 PM – 10 PM

DIM SUM DELIGHTS: WEEKEND FEAST AT LILY FU'S

Treat yourself to a weekend feast at Lily Fu's. Our Dim Sum Buffet is filled with bold, exciting flavors to delight your taste buds. From spicy Shanghai Hot & Sour Soup to mouthwatering Pork & Shrimp Shu Mai and crispy Spring Rolls, every bite is a new experience. Plus, enjoy Free Flow Oolong Tea for a perfectly relaxing afternoon.

Price: THB 549++ per person
Date: October 1 – 31, 2025
Time: Saturdays & Sundays
12 PM - 5 PM



BAO LOVERS MONDAY AT LILY FU'S

Mondays are made better with endless bao! Enjoy 90 minutes of All-You-Can-Eat Bao at Lily Fu's, featuring favorites like Hainanese Chicken, Crispy Duck Confit, 5-Spice Pork Belly, Charcoal Tiger Prawn, Thai Style Wagyu Beef, and Grilled Mixed Mushroom Bao.

Price: THB 649++ per person
(Dessert add-on +THB 99
Beer upgrade +THB 350)
Date: October 1 – 31, 2025
Time: Mondays | 12 PM – 10 PM



RAISE A GLASS AT LILY FU'S

Cheers to good times at Lily Fu's! Whether you're toasting or relaxing, it's all about great moments and great drinks.

Price: Buy 1, Get 1 Free
Date: October 1 – 31, 2025

Sparkling Wine & Mimosa Specials:
Saturdays & Sundays | 12 PM - 5 PM

Beer Happy Hour:
Daily | 2 PM - 7 PM

Tuesday Special:
Buy 1, Get 1 Free on all beverages by glass.
Tuesdays | 7 PM - 11 PM



ALL-TIME FAVORITES AT EL GAUCHO

Enjoy El Gaucho's All-Time Favorites! Savor our signature steaks, expertly grilled to perfection and served with crispy fries and your choice of pepper or mushroom sauce—the ultimate comfort meal to satisfy your cravings.

Price: Incredible deals starts from THB 590++
Date: October 1 – 31, 2025
Time: Daily | 11 AM till late



SUPER TUESDAY AT EL GAUCHO

The return of Super Tuesday at El Gaucho is here! Enjoy 50% off all grilled steaks every first Tuesday of the month. From tender cuts to perfectly seared favorites, it's the perfect opportunity to indulge in great flavors and unforgettable dining experiences.

Price: 50% off all grilled steaks
Date: October 7, 2025
Time: Daily | 11 AM till late
CALL "0" FOR RESERVATION

EXPLORE BANGKOK'S BEST NEARBY ATTRACTIONS

Discover the vibrant charm of Bangkok with these must-visit attractions, all just a short distance from Mercure Bangkok Sukhumvit 11:



SUKHUMVIT SOI 11

Known for its lively atmosphere, Sukhumvit Soi 11 is home to a variety of trendy bars, restaurants, and nightlife venues. It's the perfect spot to unwind and experience Bangkok's energetic vibe.



BELGA ROOFTOP BAR & BRASSERIE

Located on the 32nd floor of Sofitel Bangkok Sukhumvit, Belga Rooftop Bar offers stunning views of the Bangkok skyline. Enjoy a refreshing cocktail or Belgian craft beer while soaking in the atmosphere of this chic rooftop venue.

- Nearest Station: BTS Asok
- Distance: 550 m (approximately 8 minute walk)

EM DISTRICT (EM QUARTIER, EMPORIUM, AND EMSPHERE)

The EM District is a premier shopping hub, home to three world-class malls: EM Quartier, Emporium, and EmSphere. Discover luxury shopping, gourmet dining, and entertainment options, all in one vibrant location.

- Nearest Station: BTS Phrom Phong
- Distance: 2.1 km (approximately 10 minute drive)



CHATUCHAK WEEKEND MARKET

If you're in Bangkok over the weekend, don't miss Chatuchak, one of the world's largest outdoor markets. With over 15,000 stalls, it's the perfect place to shop for unique souvenirs and experience local culture.

- Nearest Station: BTS Mo Chit / MRT Kamphaeng Phet
- Distance: 11 km (approximately 26-minute drive)

SONG WAT ROAD

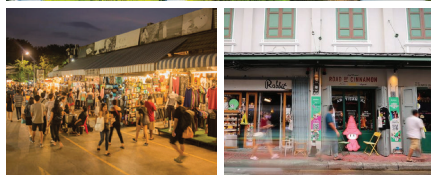
A historic riverside street, Song Wat Road is a hidden gem known for its century-old shophouses, vibrant street art, and a mix of traditional Thai eateries and trendy cafés. It's the perfect spot to wander, soak up local charm, and discover Bangkok's evolving cultural scene.

- Nearest Station: MRT Wat Mangkon, then a 10-minute walk
- Distance: 7.6 km (approximately 30 minutes by car)

BENJAKITTI PARK

Just a short drive from the hotel, Benjakitti Park offers a peaceful escape with its beautiful lakeside walking paths, perfect for a morning jog or an afternoon stroll.

- Nearest Station: MRT Queen Sirikit National Convention Center
- Distance: 3.7 km (approximately 15 minute drive)



CHATUCHAK WEEKEND MARKET

SONG WAT ROAD

TERMINAL 21 SHOPPING MALL

A unique shopping experience with each floor inspired by different world-famous cities. Whether you're shopping, dining, or simply exploring, Terminal 21 offers something for everyone. chic rooftop venue.

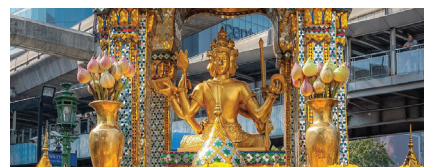
- Nearest Station: BTS Asok
- Distance: 950 m (approximately 13 minute walk)



ERAWAN SHRINE

A cultural landmark, the Erawan Shrine is famous for its religious significance and the traditional Thai dance performances offered as part of daily rituals.

- Nearest Station: BTS Chit Lom
- Distance: 2.4 km (approximately 10 minute drive)



WAT ARUN (TEMPLE OF DAWN)

A short boat ride across the Chao Phraya River brings you to Wat Arun, one of Bangkok's most iconic temples, known for its stunning Khmer-style architecture and impressive spires.

- Nearest Station: BTS Saphan Taksin (then take a boat ride)
- Distance: 17.5 km (approximately 35 minute drive)

