

MERCURE

HOTEL

BANGKOK SUKHUMVIT 11

# NEWSLETTER

*JUNE 2026*



Welcome to MerCure Bangkok Sukhumvit 11! We are excited to have you with us. From the moment you step into our lobby, the silky elegance of Thai silk will surround you, setting the tone for your stay.

At MerCure, we are all about exploring new possibilities, connecting with the local spirit, and offering you moments that inspire and elevate. Whether you are here for business or leisure, we are here to make your stay effortless.

Enjoy your silky stay with us!

Warmly,  
Jirunthara Chinvaroj, Polly  
Hotel Manager MerCure Bangkok Sukhumvit 11



### **TROPICAL SIPS AT LILY FU'S**

Something fresh is pouring at Lily Fu's. Discover three new creations inspired by Asian flavours and local ingredients—from the Spiced Colada with its smooth coconut and warm spice notes, to Mrs. Fu's, a silky blend inspired by Thai dessert flavours, and Golden Palm, a light and refreshing tropical mocktail. Whether you're in the mood for something bold, creamy, or alcohol-free, there's a glass waiting to match your moment.

Price: THB 290 per cocktail  
THB 180 per mocktail  
Date: Available daily  
CALL "0" FOR RESERVATION



### **DIM SUM DELIGHTS: WEEKEND FEAST AT LILY FU'S**

Treat yourself to a weekend feast at Lily Fu's. Our Dim Sum Buffet is filled with bold, exciting flavors to delight your taste buds. From spicy Shanghai Hot & Sour Soup to mouthwatering Pork & Shrimp Shu Mai and crispy Spring Rolls, every bite is a new experience. Plus, enjoy Free Flow Oolong Tea for a perfectly relaxing afternoon.

Price: THB 549++ per person  
Date: June 1 – 30, 2026  
Time: Saturdays & Sundays  
12 PM – 5 PM  
CALL "0" FOR RESERVATION

### **RAISE A GLASS AT LILY FU'S AT LILY FU'S**

Weekends are made for something a little brighter. Enjoy Sparkling Wine and Mimosas at Lily Fu's—perfect for slow afternoons, good company, and a touch of sparkle to your day.

Price: Buy 1, Get 1 Free  
Date: June 1 – 30, 2026  
Time: Saturdays & Sundays  
12 PM – 5 PM  
CALL "0" FOR RESERVATION



### **ALL-TIME FAVORITES AT EL GAUCHO**

Enjoy El Gaucho's All-Time Favorites! Savor our signature steaks, expertly grilled to perfection paired with crispy fries and your choice of pepper or mushroom sauce—the perfect comfort meal to satisfy your cravings.

Price: Incredible deals starts from THB 590++  
Date & Time: Daily | 11 AM till late  
CALL "0" FOR RESERVATION



### **LUNCH AT EL GAUCHO**

Take a proper break with a complete lunch at El Gaucho. Choose your preferred cut, served with your choice of side and sauce—all included. From steaks and lamb chops to burgers, ribs, pasta, grilled chicken, and salmon, it's a satisfying midday experience done right.

Price: Lunch selections from THB 490++  
Date: June 1 – 30, 2026  
Time: Daily | 11:00 AM – 2:00 PM  
CALL "0" FOR RESERVATION



### **SUPER TUESDAY AT EL GAUCHO**

The return of Super Tuesday at El Gaucho is here! Enjoy 50% off all grilled steaks every first Tuesday of the month. From tender cuts to perfectly seared favorites, it's the perfect opportunity to indulge in great flavors and unforgettable dining experiences.

Price: 50% off all grilled steaks  
Date: June 2, 2026  
Time: 11 AM till late  
Reserve before 12pm on the promotion day to avail the offer



**MERCURE**  
HOTEL  
BANGKOK SUKHUMVIT 11

18 SOI SUKHUMVIT 11 – SUKHUMVIT ROAD – KLONGTOEY NUA, WATTANA, BANGKOK 10110, THAILAND  
T +66 (0) 2 120 8888 | E-MAIL HA247-RE@ACCOR.COM | MERCURE.COM | ALL.COM

# EXPLORE BANGKOK'S BEST NEARBY ATTRACTIONS

As the city enters its festive glow, it's the perfect time to explore the vibrant charm of Bangkok. Here are some must-visit spots just moments away from Mercure Bangkok Sukhumvit 11, ready to brighten your stay with colour, flavour, and local discoveries:



## SUKHUMVIT SOI 11

Known for its lively atmosphere, Sukhumvit Soi 11 is home to a variety of trendy bars, restaurants, and nightlife venues. It's the perfect spot to unwind and experience Bangkok's energetic vibe.



## BELGA ROOFTOP BAR & BRASSERIE

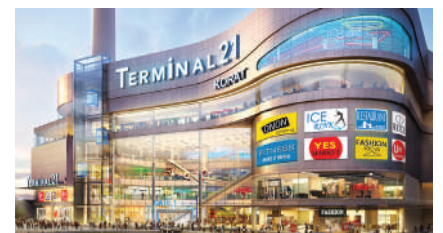
Located on the 32nd floor of Sofitel Bangkok Sukhumvit, Belga Rooftop Bar offers stunning views of the Bangkok skyline. Enjoy a refreshing cocktail or Belgian craft beer while soaking in the atmosphere of this chic rooftop venue.

- Nearest Station: BTS Asok
- Distance: 550 m (approximately 8 minute walk)

## TERMINAL 21 SHOPPING MALL

A unique shopping experience with each floor inspired by different world-famous cities. Whether you're shopping, dining, or simply exploring, Terminal 21 offers something for everyone. chic rooftop venue.

- Nearest Station: BTS Asok
- Distance: 950 m (approximately 13 minute walk)



## EM DISTRICT (EM QUARTIER, EMPORIUM, AND EMSPHERE)

The EM District is a premier shopping hub, home to three world-class malls: EM Quartier, Emporium, and EmSphere. Discover luxury shopping, gourmet dining, and entertainment options, all in one vibrant location.

- Nearest Station: BTS Phrom Phong
- Distance: 2.1 km (approximately 10 minute drive)



## ERAWAN SHRINE

A cultural landmark, the Erawan Shrine is famous for its religious significance and the traditional Thai dance performances offered as part of daily rituals.

- Nearest Station: BTS Chit Lom
- Distance: 2.4 km (approximately 10 minute drive)



## CHATUCHAK WEEKEND MARKET

If you're in Bangkok over the weekend, don't miss Chatuchak, one of the world's largest outdoor markets. With over 15,000 stalls, it's the perfect place to shop for unique souvenirs and experience local culture.

- Nearest Station: BTS Mo Chit / MRT Kamphaeng Phet
- Distance: 11 km (approximately 26-minute drive)

## SONG WAT ROAD

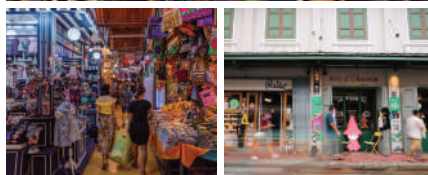
A historic riverside street, Song Wat Road is a hidden gem known for its century-old shophouses, vibrant street art, and a mix of traditional Thai eateries and trendy cafés. It's the perfect spot to wander, soak up local charm, and discover Bangkok's evolving cultural scene.

- Nearest Station: MRT Wat Mangkon, then a 10-minute walk
- Distance: 7.6 km (approximately 30 minutes by car)

## BANTHATTHONG ROAD

A buzzing food street beloved by locals, Banthatthong Road is the go-to spot for authentic Thai comfort food and late-night bites. From Michelin Bib Gourmand noodle stalls to modern dessert cafés.

- Nearest Station: BTS National Stadium or BTS Ratchathewi, then a short walk
- Distance: 3 km (approximately 10-15 minutes by car)



CHATUCHAK WEEKEND MARKET SONG WAT ROAD

## WAT ARUN (TEMPLE OF DAWN)

A short boat ride across the Chao Phraya River brings you to Wat Arun, one of Bangkok's most iconic temples, known for its stunning Khmer-style architecture and impressive spires.

- Nearest Station: BTS Saphan Taksin (then take a boat ride)
- Distance: 17.5 km (approximately 35 minute drive)

