

● CAPACITY-CHART ●

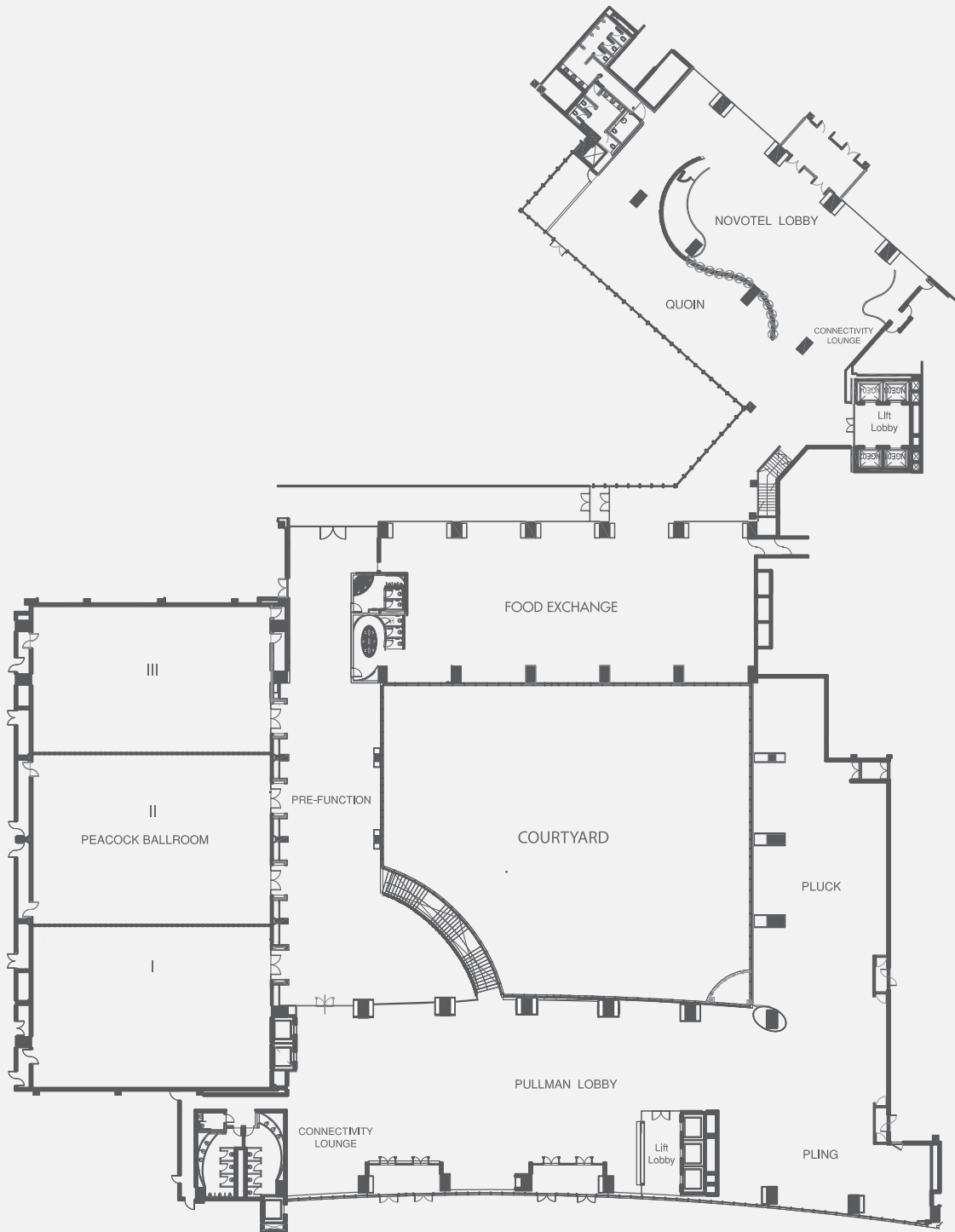
	Length (ft/mt)	Width (ft/mt)	Height (ft/mt)	Area (sqft /sqmt)	Projector Lumen	Screen Size	Theatre	Class Room	Cluster	Sit Down	U Shape	Board Room
Peacock Ball Room	161(49)	79(24)	22(6-7)	12719(1181)	10000	23ft X 17ft	1500	750	528	792	N/A	N/A
Peacock Ball Room 1	55(16.7)	79(24)	22(6-7)	4345(403)	10000	23ft X 15ft/23ft X 17ft	500	264	200	250	70	80
Peacock Ball Room 2	54(16.4)	79(24)	22(6-7)	4266(396)	7000	23ft X 17ft	500	264	200	250	70	80
Peacock Ball Room 3	52(15.8)	79(24)	22(6-7)	4108(381)	7000	23ftX 15ft	450	264	200	200	70	80
Pre-function Area	164(19.5)	35(10.6)	15(4.5)	5684(529)	N/A	N/A	N/A	N/A	N/A	N/A	N/A	N/A
Comeeting 1	46(14)	34(10)	12(3.6)	1572(146)	4000	12ft X 9ft	108	54	42	N/A	22	26
Comeeting 2	47(14)	22(6-7)	12(3.6)	1033(96)	4000	12ft X 9ft	110	54	40	N/A	24	30
Comeeting 3	39(12)	22(6-7)	12(3.6)	873(81)	4000	12ft X 9ft	110	54	40	N/A	22	28
Comeeting 4	30(9)	25(7-6)	12(3.6)	739(69)	4000	10ft X 7ft	77	30	25	N/A	20	26
Comeeting 5	31(9-5)	23(7)	12(3.6)	722(67)	4000	10ft X 7ft	77	30	25	N/A	20	26
Comeeting 6	31(9-5)	12(3-6)	12(3.6)	359(33)	N/A	60" LED screens				Capacity as 8 pax		
Comeeting 7	37(11)	20(6)	12(3.6)	753(70)	4000	12ft X 9ft	77	30	25	N/A	20	26
Comeeting 8	25(7-6)	15(4-5)	12(3.6)	359(33)	N/A	60" LED screens				Capacity as 8 pax		
Comeeting 9	37(11)	20(6)	12(3.6)	728(68)	4000	12ft X 9ft	80	30	30	N/A	20	26
Comeeting 10	38(11-5)	20(6)	12(3.6)	756(70)	4000	12ft X 9ft	80	30	30	N/A	20	26
Comeeting 11	38(11-5)	20(6)	12(3.6)	774(72)	4000	12ft X 9ft	80	30	30	N/A	20	26
Comeeting 12	31(9-5)	19(5-7)	12(3.6)	593(55)	N/A	8ft X 6ft	N/A	N/A	N/A	N/A	N/A	10
Comeeting 13	40(12)	22(6-7)	12(3.6)	859(80)	4000	12ft X 9ft	110	54	40	N/A	22	28
Courtyard	N/A	N/A	N/A	11625	N/A	N/A				Casual setup upto 300 pax.		

The above chart does not include stage and AV set up.

GF

FLOOR PLAN

GROUND FLOOR



FLOOR PLAN

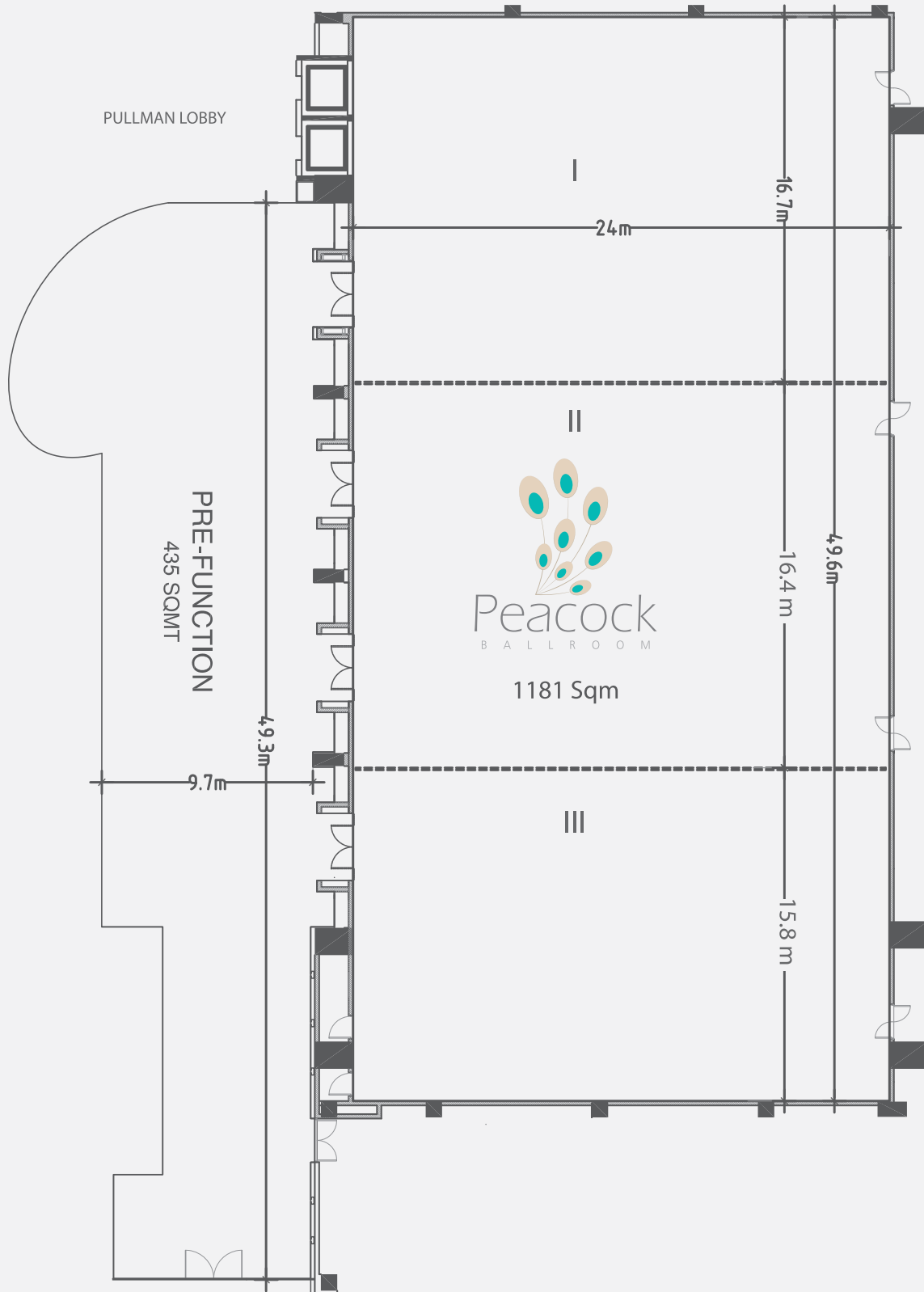
LOWER GROUND FLOOR



BALLROOM

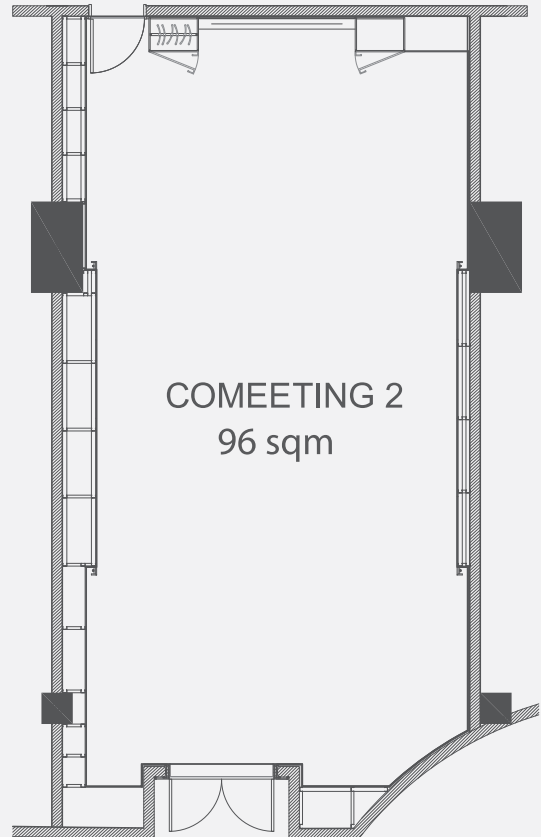
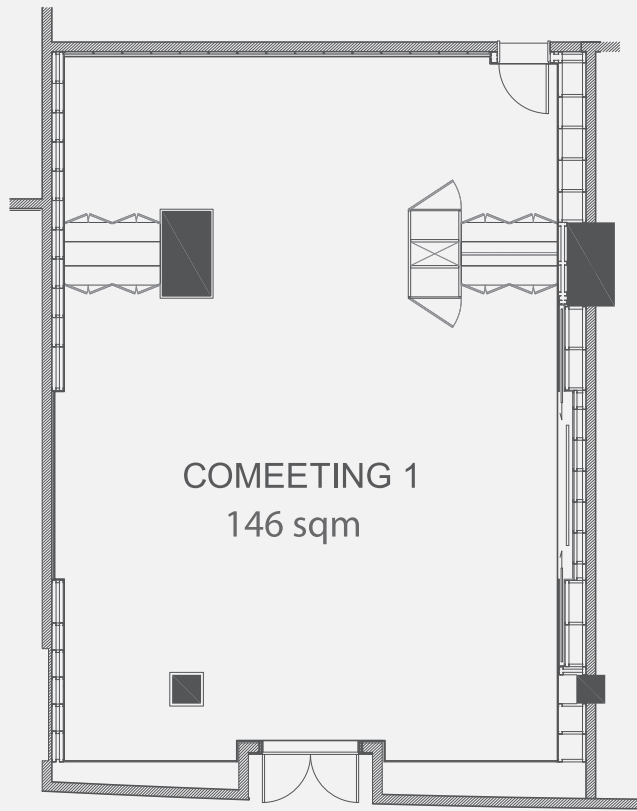
LAYOUT

BALLROOM



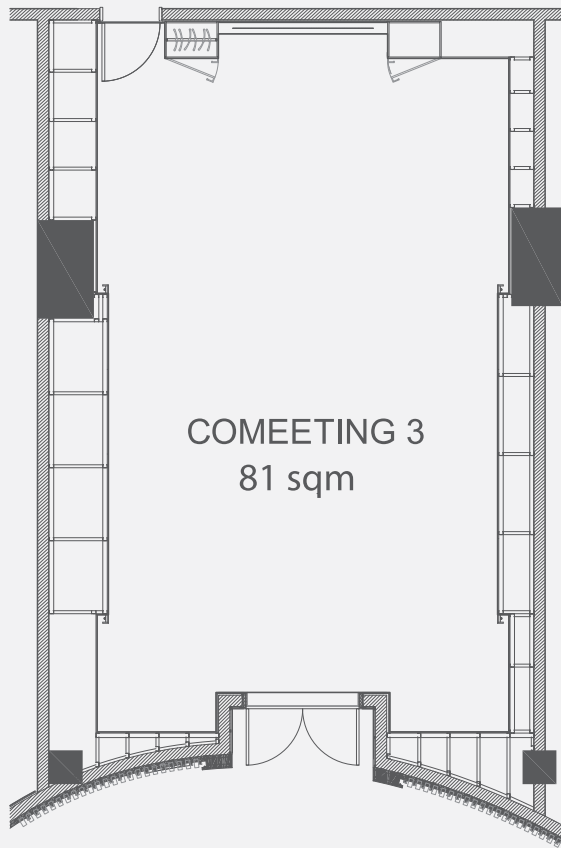
LAYOUT

COMEEETING ROOM 1 & 2

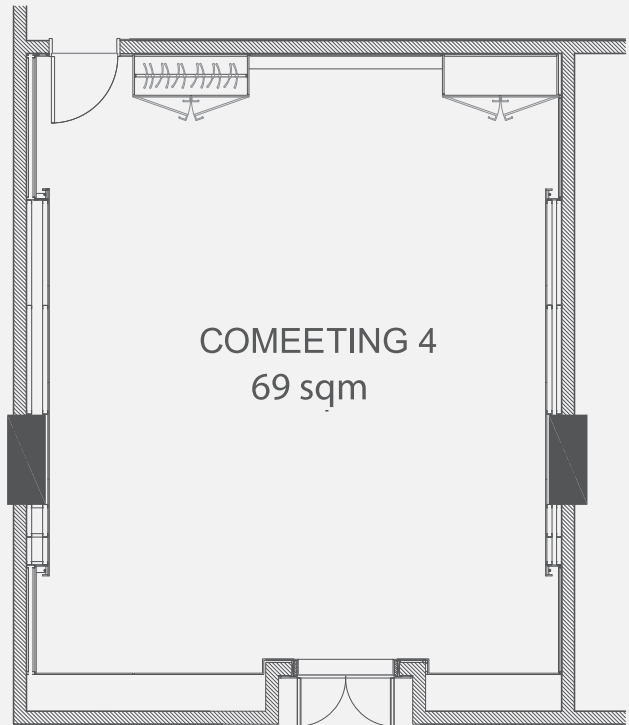


LAYOUT

COMMEETING ROOM 3 & 4



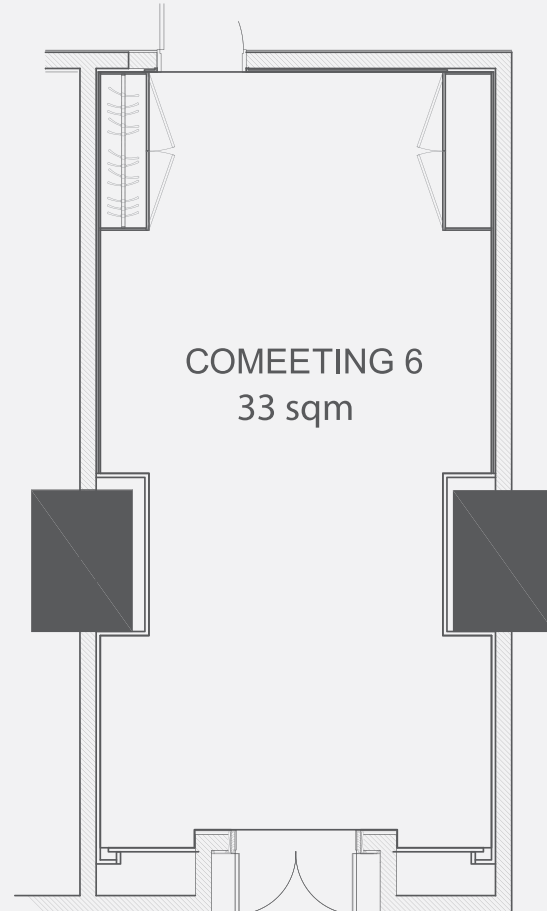
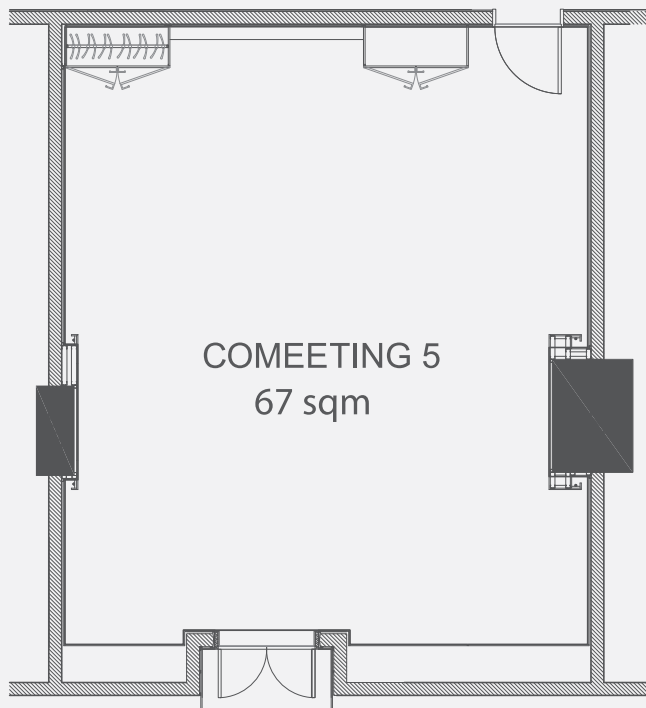
COMMEETING 3
81 sqm



COMMEETING 4
69 sqm

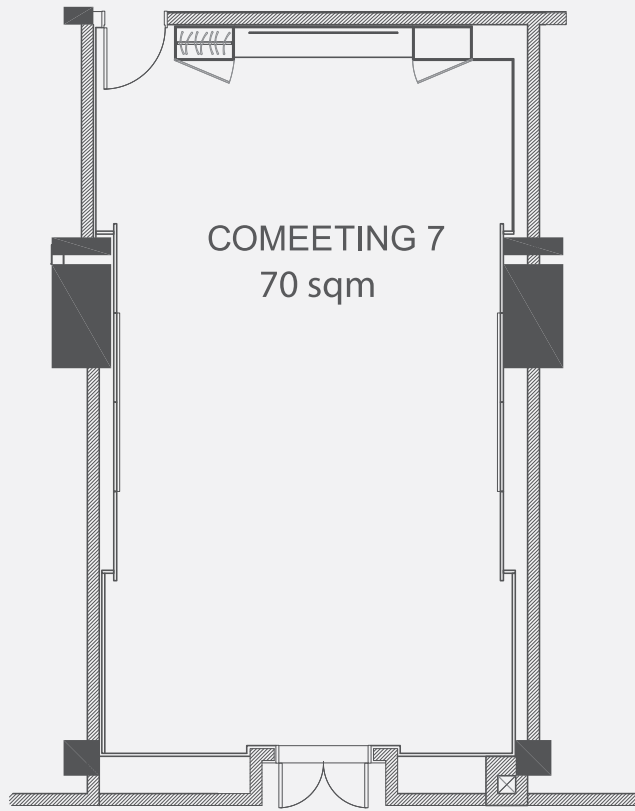
LAYOUT

COMEETING ROOM 5 & 6



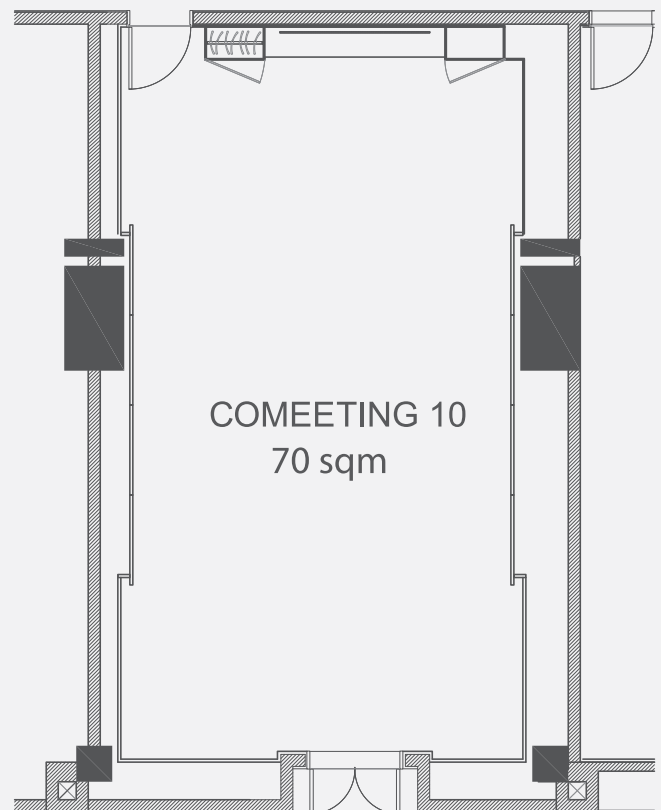
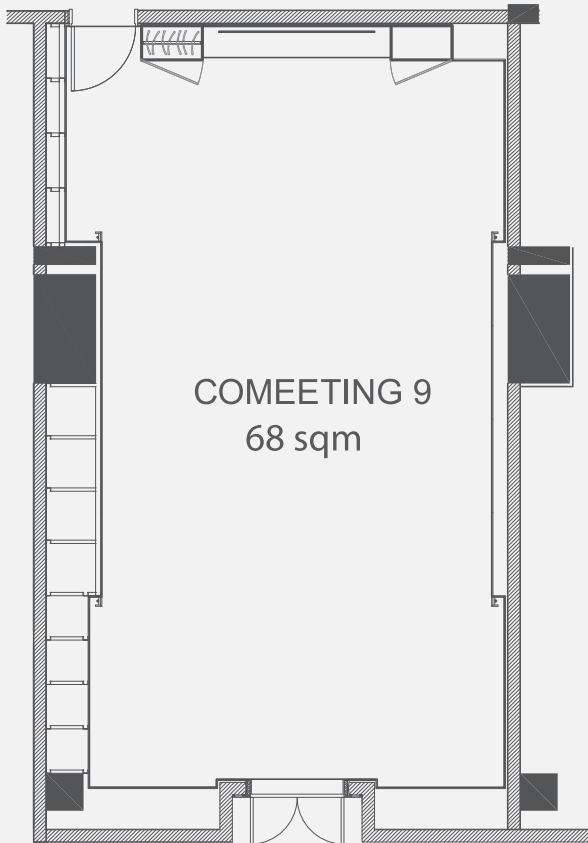
LAYOUT

COMMEETING ROOM 7 & 8



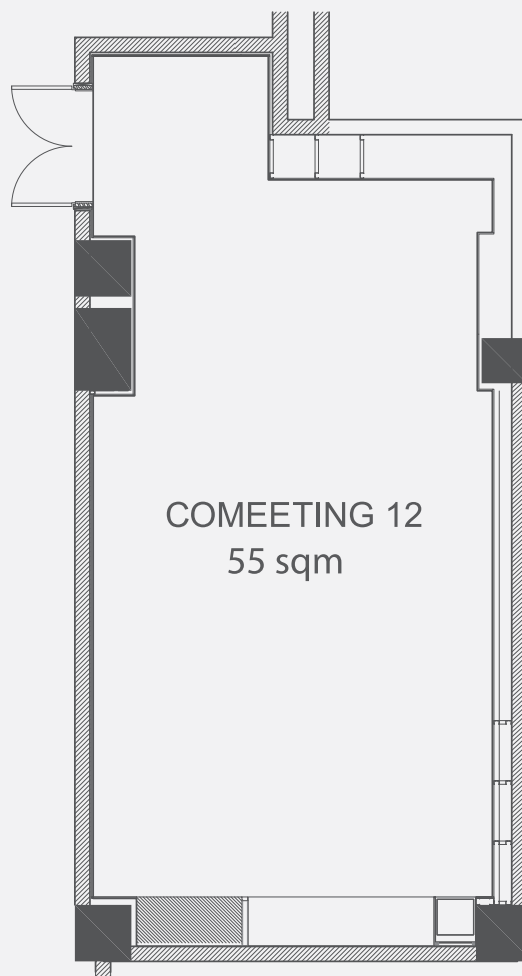
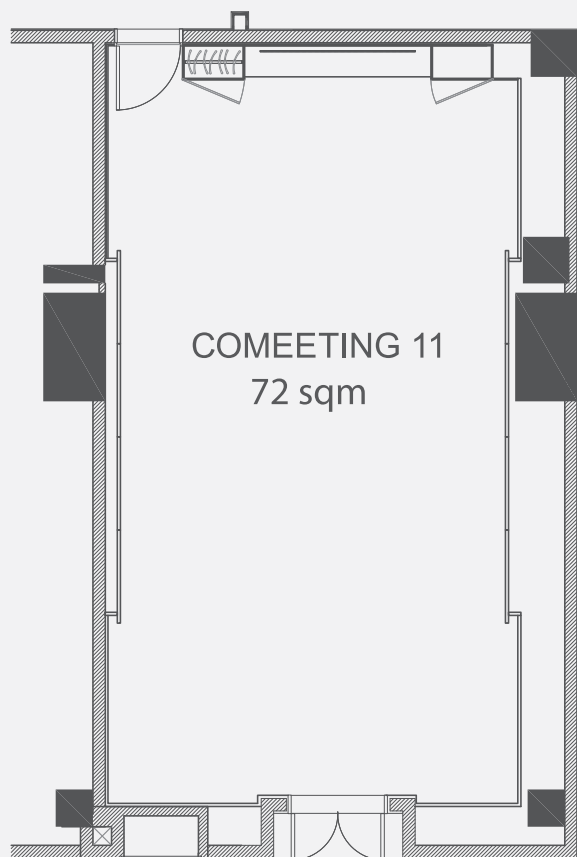
LAYOUT

COMEETING ROOM 9 & 10

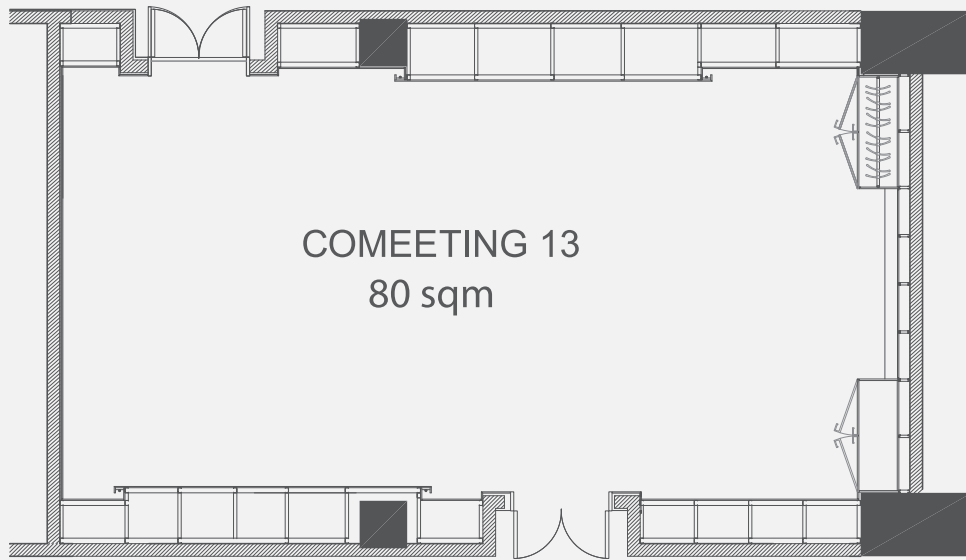


LAYOUT

COMMEETING ROOM 11 & 12



LAYOUT
COMMEETING ROOM 13



COURTYARD

