



GRAND MERCURE
WELLINGTON



MEET WITH STYLE



IMPECCABLE TASTE MEETS STYLISH SPACES AT GRAND MERCURE WELLINGTON

Eight flexible meeting rooms, boasting natural daylight and air conditioning, provide creative canvases and modular meeting spaces. With the ability to accommodate up to 200 people theatre style and ample, secure onsite car parking, Grand Mercure is the ultimate destination for bespoke conferences, board meetings, events and retreats.

LOCATION

Overlooking the Cuban quarter, tucked away between the scenic hills of Wellington and the busy restaurants and theatres of Cuba Street, the Grand Mercure Wellington embodies all of these features to tell the story of New Zealand and the coolest little capital. Our stories can be experienced from in room amenities through to iconic art and restaurant menus. With 114 guest rooms, 8 conference and event spaces and leisure facilities, Grand Mercure Wellington caters for every kind of traveller.





8 MEETING AND EVENT SPACES & 114 GUEST ROOMS & SUITES








- 8 dedicated spaces for up to 200 guests in our largest room
- Selected spaces feature natural light and cityscape vistas
- On site professional conference team
- Team building and attractions close by
- Forage Kitchen + Bar offering city and harbour views
- Gym, sauna and indoor heated lap pool
- Valet car parking onsite

TECHNICAL FEATURES

- Broadband and fibre wireless internet access
- State-of-the-art audio visual equipment*
- Digital event signage per meeting room

*AV quote available on request

CAPACITIES CHART

ROOM NAMES								HEIGHT (M)	SURFACE (M2)	FULL DAY	HALF DAY USE
THE RETREAT	84	35	28	35	42	56	69	2.2	90	\$800	\$600
RETREAT 1	35	14	16	12	18	24	29	2.2	45	\$400	\$300
RETREAT 2	35	14	16	12	18	24	29	2.2	45	\$400	\$300
THE GALLERY*	200	40	66	90	84	112	189	2.2	180	\$1200	\$800
GALLERY 1*	125	29	32	30	36	64	89	2.2	95	\$700	\$500
GALLERY 2*	100	25	30	25	30	48	69	2.2	85	\$700	\$500
RESIDENCE*	56	25	30	22	30	40	49	2.6	70	\$500	\$350
BOARDROOM	32	15	18	24	-	-	10	2.1	38	\$350	\$250

EVENT AREAS	
BAR LOUNGE	20
LOBBY LOUNGE	20

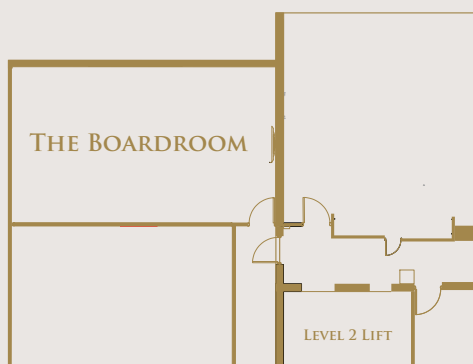
*Cabaret is based on oval tables of 6. Banquet is based on oval tables of 8. *Indicates room with projectors and screens.*

*** AV is at an additional cost.*



FLOOR PLANS

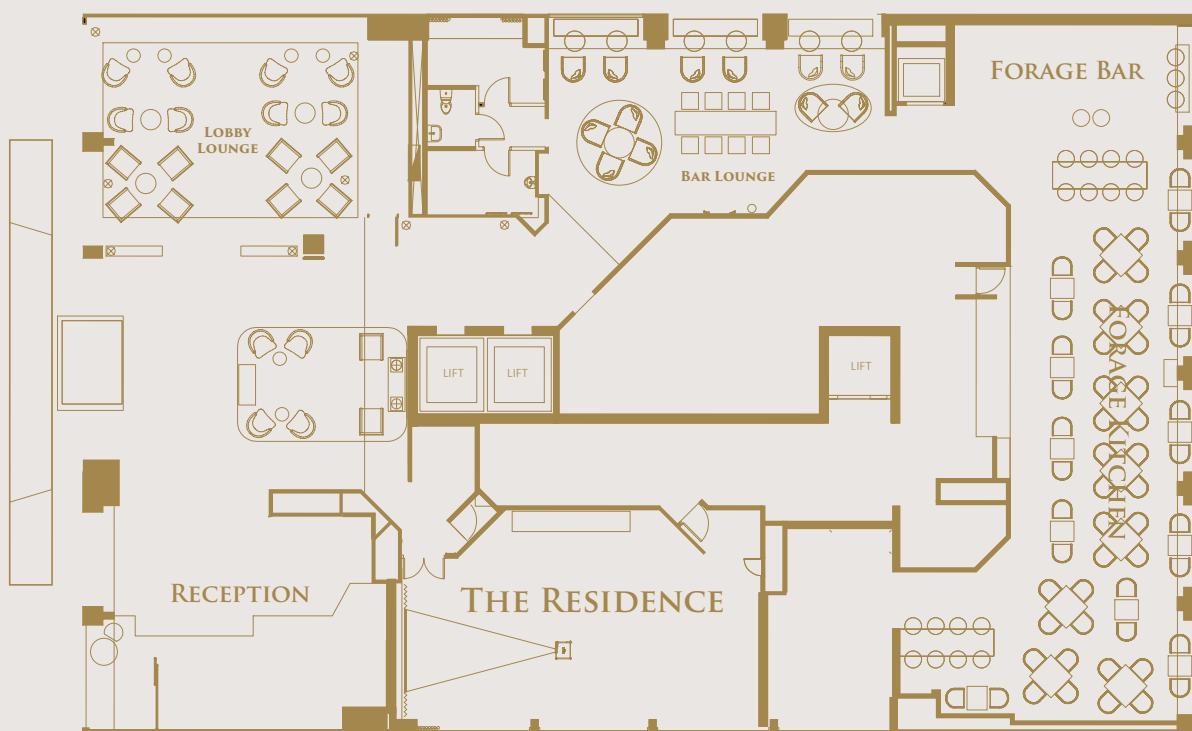
Level 2



Level 4



Level 5





DAY DELEGATE PACKAGES

DAY DELEGATE PACKAGE - \$75 PER PERSON, PER DAY

Includes:

- Arrival tea and coffee
- Morning tea including tea, coffee and one food item
- Buffet lunch
- Afternoon tea including tea, coffee and one food item
- Room hire
- Whiteboard and flipchart
- Complimentary Wi-Fi
- Note pads, pens and water on tables

HALF DAY DELEGATE PACKAGE - \$65 PER PERSON PER DAY

Includes:

- Arrival tea and coffee
- Morning or afternoon tea including tea, coffee and one food item
- Buffet lunch
- Room hire
- Whiteboard and flipchart
- Complimentary Wi-Fi
- Note pads, pens and water on tables

A choice of one upgrade:

Choose from a Nespresso coffee machine or 1 facilitator's carpark

The above package requires a minimum number of 20 delegates.

Half day delegate package available. All pricing on request.





DAY DELEGATE PACKAGE - ADD ONS

ALTERNATIVE CATERING OPTIONS AND COSTS

- Arrival tea and filtered coffee: \$4.50 per person, per day*
- Continuous tea and filtered coffee: \$12.00 per person, per day*
- Plated breakfast: \$34.00 per person, per day
- Morning or afternoon tea: \$10.00 per person, per day
- Working lunch: \$29.00 per person, per day
- Buffet Lunch: \$35.00 per person, per day
- Plated Lunch: from \$55.00 per person, per day
- Buffet Dinner: from \$65.00 per person, per day
- Plated Dinner: from \$75.00 per person, per day

*Upgrade to a Nespresso for \$2.00 per person, per day

Canapés

- 2 cold / 2 hot selections: \$22 per person
- 3 cold / 3 hot selections: \$26 per person
- 4 cold / 4 hot selections: \$30 per person
- Large sharing platter: \$50 each

Beverage Packages

- 1 Hour Drinks: \$20 per person
- 2 Hour Drinks: \$36 per person
- 3 Hour Drinks: \$48 per person





AUDIO VISUAL

EQUIPMENT

Wall mounted LCD Monitor for Retreat 1, 2 and The Boardroom

Projector and screen system for The Residence, Gallery 1 and 2

Laptop

Remote mouse

Whiteboard

Lectern

Small PA system with laptop audio and plinth

Flipchart and one pad

Additional flipchart paper

*Additional Audio Visual equipment can be arranged via Encore Event Technologies our AV supplier.
All prices on request.*



LE CLUB MEETING PLANNER

REWARDING YOUR LOYALTY

Sign up to Le Club AccorHotels Meeting Planner programme and enjoy a host of benefits in over 2000 hotels in 90 countries worldwide

PAY WITH POINTS

Off-set the cost of your event (up to 15% of the total bill) by paying with hotel vouchers redeemed with your points.

NO LIMIT

No maximum or minimum event spend.

REWARDS

Redemption rewards including; fully transferrable hotel vouchers, bookings online, frequent flyer points with more than 20 airline partners, elite member experiences and more.

LIFETIME VALIDITY

Points do not expire as long as you stay or hold a meeting at least once every 12 months in a participating hotel.

UNIQUE PRIVILEGES

From free internet, room upgrades, and access to early check-in and late check-out.

MINIMAL RESTRICTIONS

Only a minimum of 8 delegates or 8 rooms required for eligible events.

SHOP ONLINE

La Collection online redemption boutique- coming soon!

If you are not already a Le Club AccorHotels Meeting Planner member, enquiry with us today and start earning points on this event.

www.accorhotels.com/meetingplanner





This hotel participates in the AccorHotels global sustainability programme, PLANET 21. The programme covers all of AccorHotels' environmental, social and community obligations. Through PLANET 21, AccorHotels are acting together for the wellbeing of our world and in all our hotels, we work with employees, guests and partners to reinvent hotels – sustainably. By choosing us for your next meeting, event or accommodation requirements, you are making a difference to the planet, and are showing your support towards making hotels more sustainable.



Organise your meeting online at
accorconferences.co.nz
 or call our conference team
 Tel: (04) 385 2119 or email: h1991-sb1@accor.com

GRAND MERCURE WELLINGTON

345 The Terrace, Te Aro, Wellington, New Zealand
 Phone +64 (04) 385 9829 | Email h1991-sb1@accor.com

grandmercure.com | accorhotels.com