



The
William
Inglis

MALLERY, SOUTHWEST SYDNEY

Weddings
AT

THE WILLIAM INGLIS HOTEL

Riverside Stables, Sydney | 2026-27 EDITION

Create your story

Indulge in a sense of rich history, elegance and modern luxury. Your journey together begins with a truly bespoke full service venue. Our dedicated events team offer a tailored package for your special day. Create your memorable moment and say 'I Do' in any of the 23 unique event spaces on site at The William Inglis Hotel.

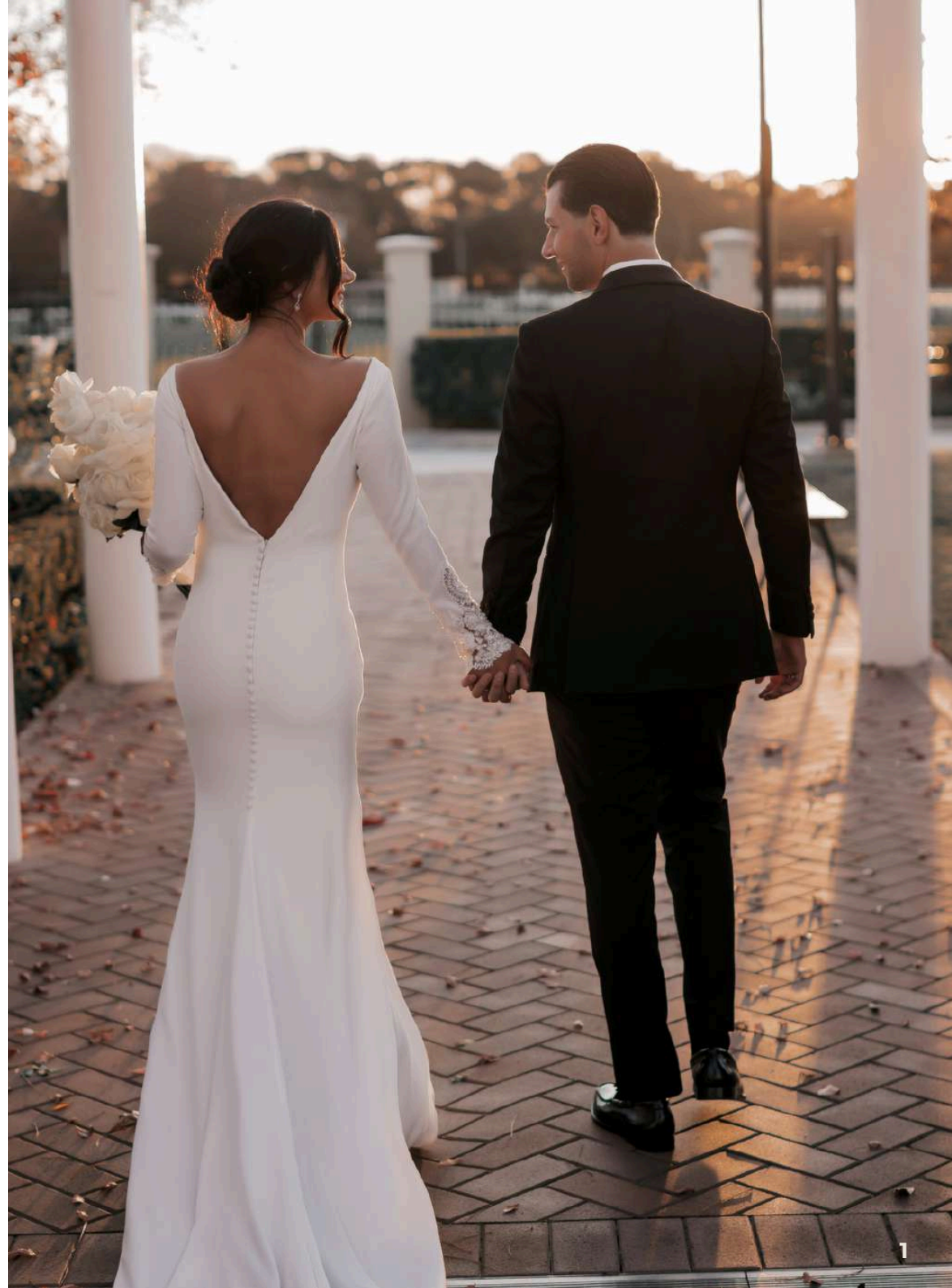
About us

Located in the South West of Sydney, The William Inglis is a part of the MGallery Hotel Collection inviting guests to immerse themselves in tales of adventure, romance, history, culture and nature.

Situated only 30 minutes from Sydney Airport and 45 minutes from the Sydney CBD, the boutique property features:

- 144 accommodation rooms
- All day dining precincts
- Chiltern Roof Top Pool
- Inglis Day Spa

Boasting an abundance of event spaces and a passion for heartfelt hospitality, The William Inglis makes for the ideal location to spoil yourself and your guests on your special day.



Your ceremony

Start your love story in our Rose Pavilion

- Water station
- 40x ceremony chairs
- Microphone for celebrant
- Signing table for wedding certificate
- Access to grounds for photography
- Complimentary parking

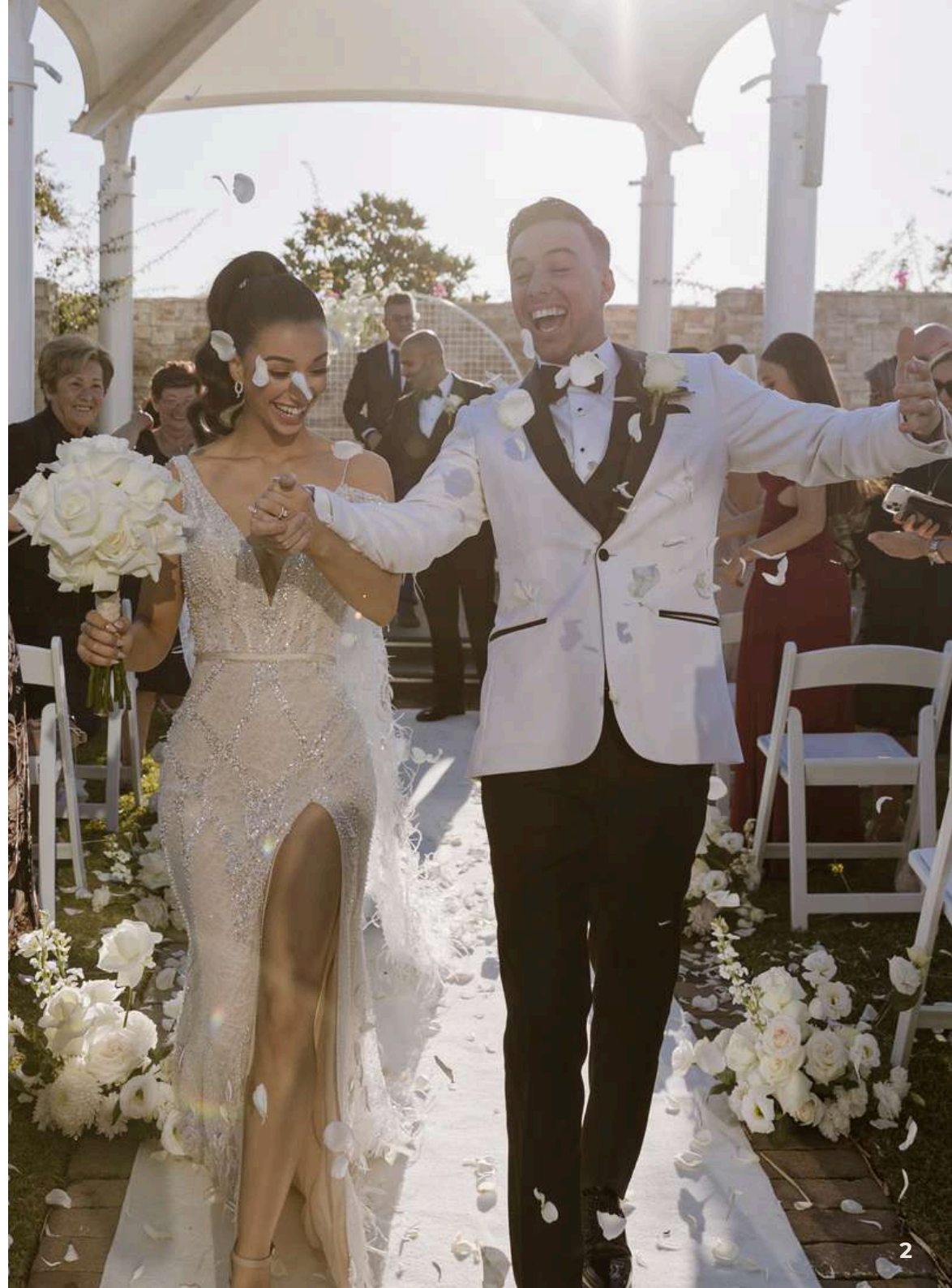
Please note: Ceremony only bookings are allocated to a 1 hour time block of 10am-11am or 11am-12pm.

All ceremonies have 1 hour bump in time prior to ceremony start time.



Beers and Bubbles upgrade

Add on 30 minutes of house beer, bubbles and chefs selection of 3 x roaming canapes.



Classic Package

- 5 hour venue hire
- Still and sparkling water per table
- 4.5 hour Bronze Beverage Package
- Fresh bread rolls with cultured butter
- 2 course plated menu served alternatively
- Wedding cake served on platters per table
- Brewed tea & coffee served during dessert
- Table set up including black or white linen, cutlery, crockery and glassware
- Decorative wine barrel
- Timber easel for clients own welcome display
- Gift table, cake table and cake knife
- Black Dance floor
- Roaming microphone
- Use of precinct grounds for wedding photos
- Complimentary car parking



Romance Package

- Still and sparkling water per table
- 4.5 hour Bronze Beverage Package
- Fresh bread rolls with cultured butter
- 3 course plated menu served alternatively
(Or replace 1 x course with a selection of canapes)
- Wedding cake served on platters per table
- Brewed tea & coffee served during dessert
- Table set up including black or white linen, cutlery, crockery and glassware
- Decorative wine barrel
- Timber easel for clients own welcome display
- Gift table, cake table and cake knife
- Black Dancefloor
- Roaming Microphone
- Use of precinct grounds for wedding photos
- Complimentary car parking



Deluxe Package

- 5 hour venue hire
- Still and sparkling water per table
- 4.5 hour Bronze Beverage Package
- Selection of 3 x canapes on arrival (30 min)
- Fresh bread rolls with cultured butter
- 3 course plated menu served alternatively
- Wedding cake served on platters per table
- Brewed tea & coffee served during dessert
- Table set up: black or white linen, cutlery, glassware and crockery
- Decorative wine barrel
- Timber easel for clients own welcome display
- Gift table, cake table and cake knife
- Dancefloor
- Roaming Microphone
- Use of precinct grounds for wedding photos
- Complimentary car parking



Beverage Package

All Packages include beer, soft drinks, juice herbal tea and pot brewed coffee.

Bronze

| | |
|-----------------------------|---------------|
| First Creek Botanica Cuvee | Hunter Valley |
| First Creek Botanica Shiraz | Hunter Valley |
| First Creek Botanica SSB | Hunter Valley |
| Deakin Moscato | Victoria |

Silver - Selection of 4 wines

| | |
|---------------------------------|-----------------|
| Motley Cru Prosecco | |
| Motley Cru Pinot Grigio | Victoria |
| Motley Cru Chardonnay | Victoria |
| Motley Cru Sauvignon Blanc | Victoria |
| Motley Cru Shiraz | Victoria |
| Motley Cru Pinot Noir | Victoria |
| Motley Cru Sanogiovese | Victoria |
| Hesketh The Proposition Moscato | Victoria |
| | Limestone Coast |

Gold- Selection of 4 wines

| | |
|------------------------------------|-----------------|
| Fourty-Two Degrees Premier Cuvee | Tasmania |
| The Falls Sauvignon Blanc | Adelaide Hills |
| Thorn-Clarke Sandpiper Chardonnay | Eden Valley |
| The Pawn El Desperado Pinot Grigio | Adelaide Hills |
| Mojo Moscato | South Australia |
| Alta Pinot Noir | Victoria |
| Mountadam 550 Cab. Sauvignon | Eden Valley |
| Bruno Shiraz | Barossa Valley |

Open Bar and Bar Tab options also available upon request.





Reception Spaces

Photography and video

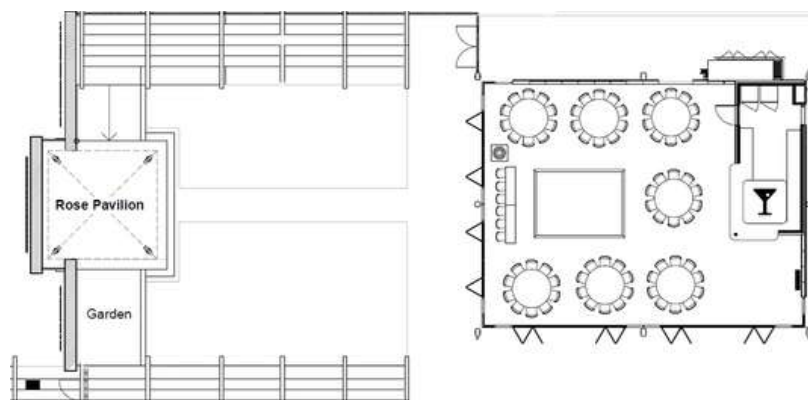
T-ONE IMAGE

The Garden Pavilion

80 Banquet | 120 Cocktail

An elegant and intimate venue that overlooks Warwick Farm Racecourse and the stunning grounds of Riverside Stables.

Bathed in natural light with floor to ceiling windows the Garden Pavilion is a beautiful location to celebrate tying the knot.

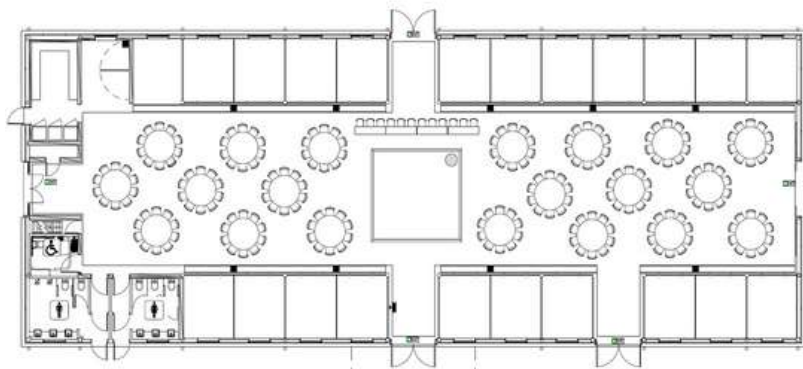


The Big Barn

250 Banquet | 400 Cocktail

Start your next chapter with a hint of rural soul in this modern and unique venue.

Featuring exposed wooden beams and high ceilings, The Big Barn will be the start of a journey that is truly unforgettable.

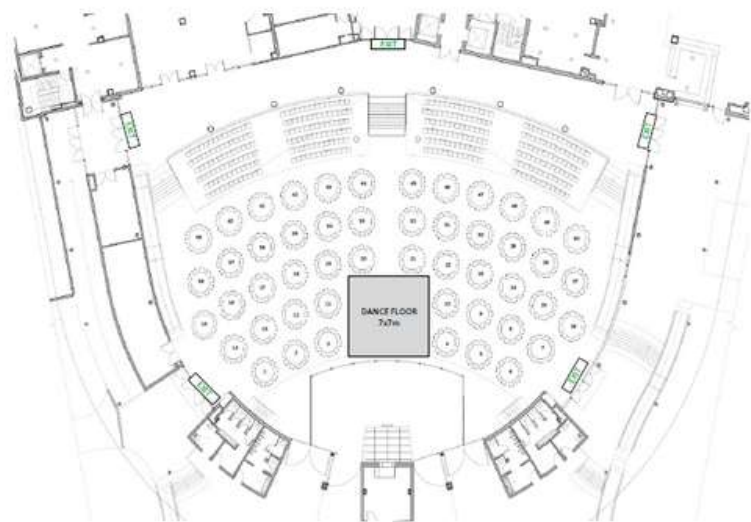


The Sales Arena

650 Banquet | 1000 Cocktail

With an impressive array of features, The Arena offers the utmost in versatility for your special day. This is the largest of our event spaces with a ceiling height of up to 15m.

The Arena is a blank canvas allowing your styling dreams to come true. A beautiful start in your next chapter together.



"Our friendly team look forward to welcoming you to luxury in the heart South West Sydney."

Belinda Thomson, Hotel Manager

- ✉ hb042-EV1@accor.com
- ☎ (02) 9058 0365
- 📍 155 Governor Macquarie Drive,
Warwick Farm NSW 2170
- 🌐 www.williaminglis.com.au
- 📘 The William Inglis Hotel
- 📷 [thewilliaminglis](https://www.instagram.com/thewilliaminglis)