

Fairmont
SINGAPORE

swissôtel THE STAMFORD
SINGAPORE

A PREMIUM HOSPITALITY EXPERIENCE

EXHILARATING RACES. BREATHTAKING VIEWS. EXCEPTIONAL HOSPITALITY.

15 — 17 SEPTEMBER 2023

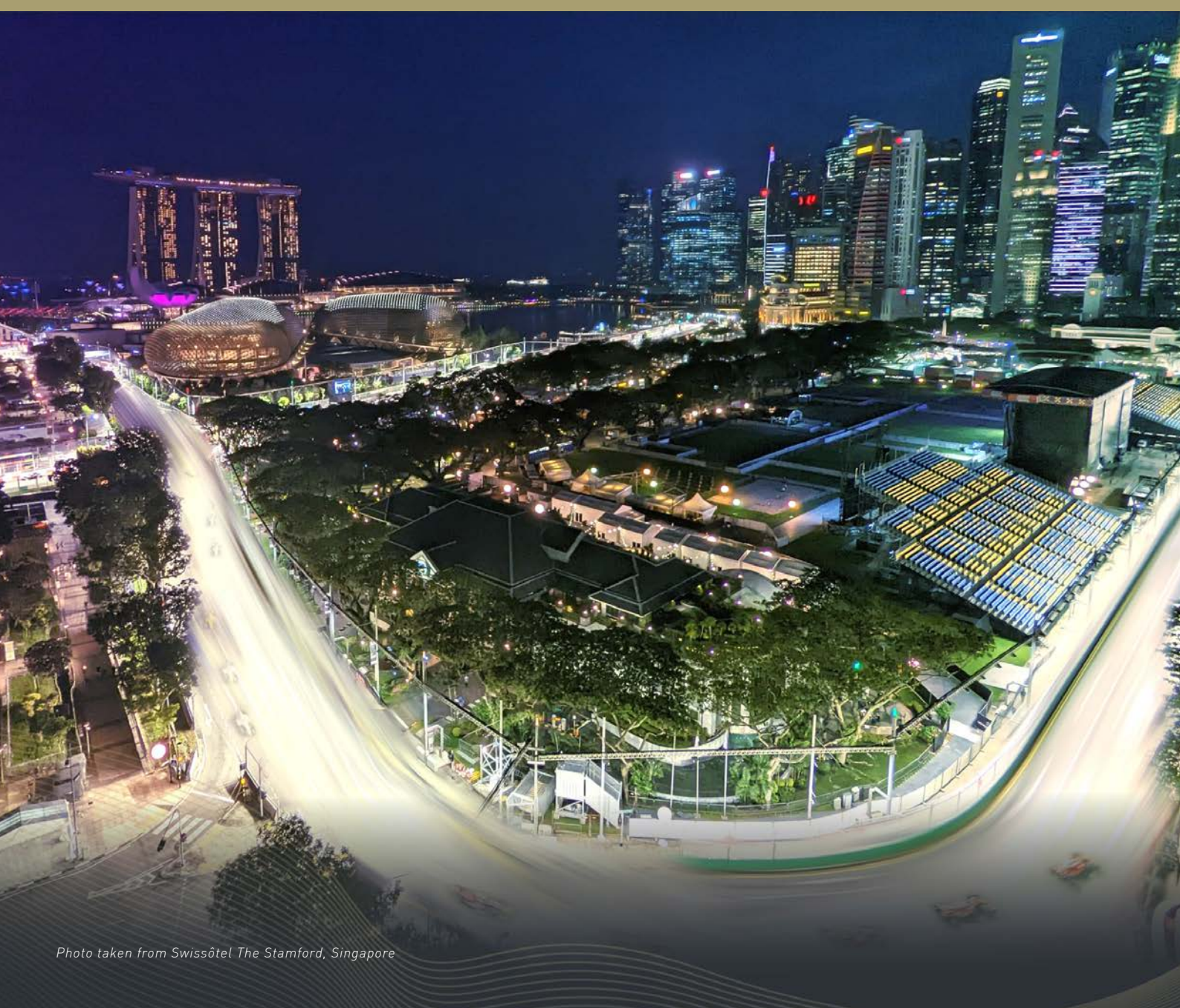


Photo taken from Swissôtel The Stamford, Singapore

UNPARALLELED BIRD'S EYE VIEW

Soak in spectacular panoramic views from up high, dine with ease and sophistication, and be captivated by the glistening city as it comes alive at night. Supremely situated at Turn 9 of the street circuit, right in the centre of the pulsating action, enjoy unsurpassed access to the race track from this towering hospitality icon.

UNRIVALLED LOCATION, PREMIUM ACCESS

Strategically situated atop City Hall and Esplanade Mass Rapid Transit (MRT) stations, Fairmont Singapore and Swissôtel The Stamford is located within Singapore's business, cultural, shopping and entertainment hotspots.



2023 CIRCUIT MAP

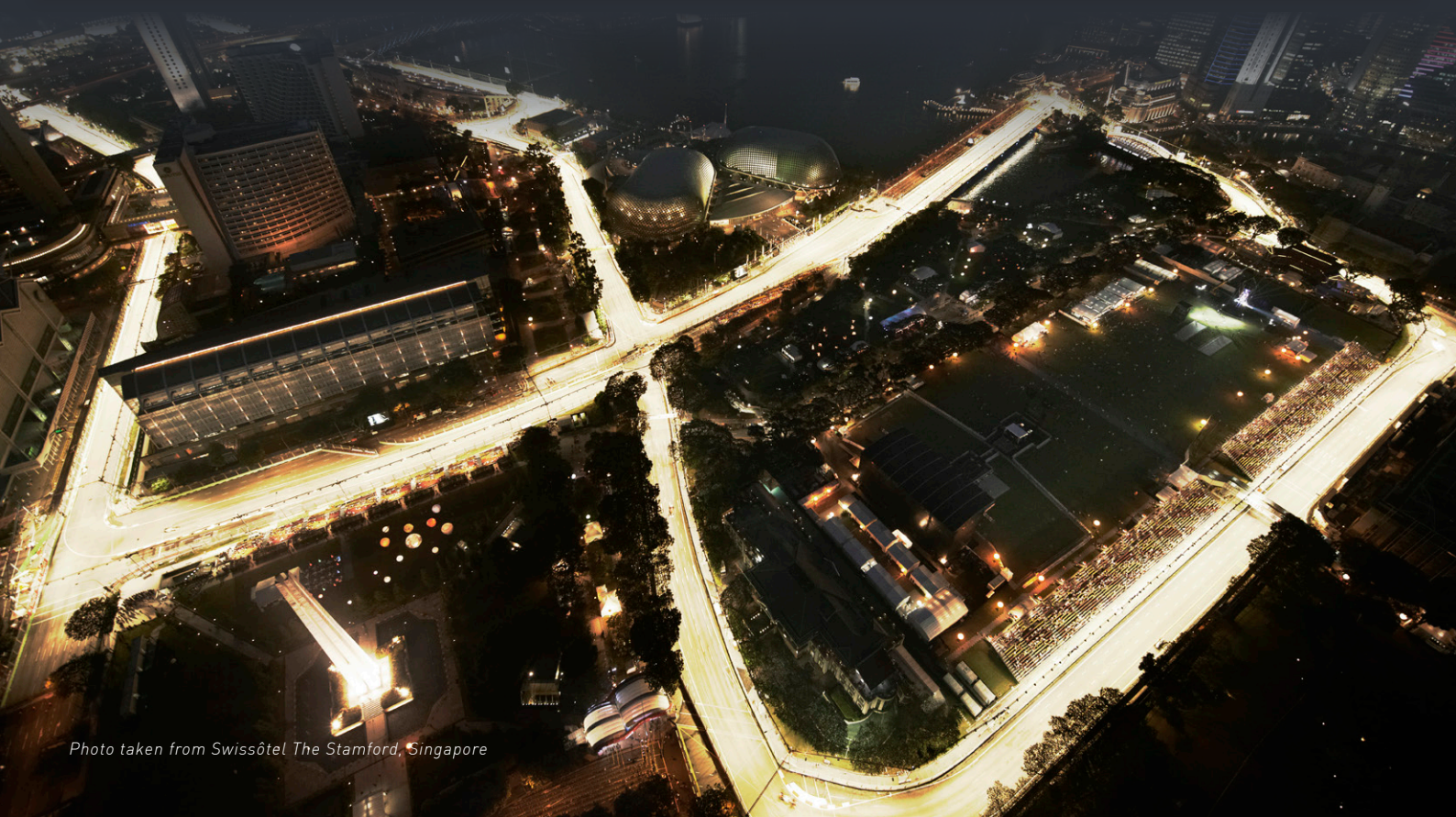


Photo taken from Swissôtel The Stamford, Singapore



PREMIER HOSPITALITY SUITES

Host friends or VIP guests in fully-equipped hospitality suites with breathtaking balcony and track views, impeccable food and beverages, and more, right in the heart of the action.



Fairmont Singapore



Swissôtel The Stamford

COMFORT

- + Hospitality suite with balcony and track views at Swissôtel The Stamford
- + Preferential room accommodation rates available
- + Rooms and suites from level 7 for a close up view of the track; to level 60 for a wider view

INDULGE

- + Wide array of exquisite canapés, platters and desserts for four hours
- + Free-flow wines and beers for four hours
- + Choice of standard or premium beverage package

For bookings, please contact our sales team at conventions.singapore@fairmont.com.

HOSPITALITY SUITES AT SWISSÔTEL THE STAMFORD



PREMIER HARBOUR ROOM

Level 7 to 38

Maximum 15 persons

From \$45,000**

3 Days – Friday to Sunday

From \$36,000**

2 Days – Friday to Sunday

[Click to View
Virtual Tour](#)



SWISS HARBOUR ROOM

Level 39 to 57

Maximum 15 persons

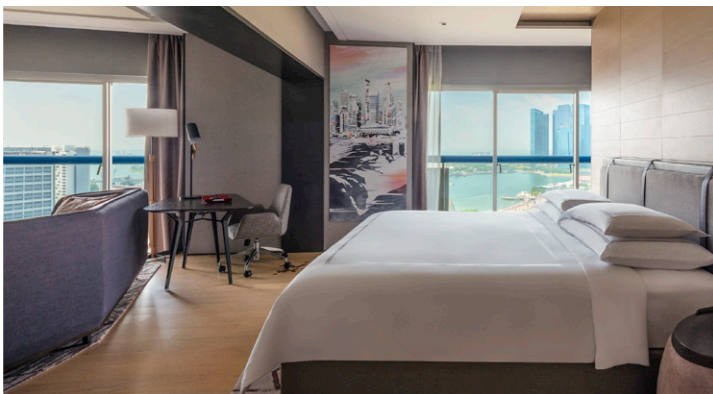
From \$72,000**

3 Days – Friday to Sunday

From \$54,000**

2 Days – Friday to Sunday

[Click to View
Virtual Tour](#)



HARBOUR VIEW ROOM

Level 27 & 28

Maximum 30 persons

From \$84,000**

3 Days – Friday to Sunday

From \$60,000**

2 Days – Friday to Sunday

[Click to View
Virtual Tour](#)



CREST SUITE

Level 64 & 66

Maximum 30 persons

From \$135,000**

3 Days – Friday to Sunday

From \$96,000**

2 Days – Friday to Sunday

[Click to View
Virtual Tour](#)



PRESIDENTIAL SUITE

Level 66

Maximum 50 persons

From \$240,000**

3 Days – Friday to Sunday

From \$165,000**

2 Days – Friday to Sunday

[Click to View
Virtual Tour](#)



CATCH A GLIMPSE OF
2022's RACE HERE



IT'S NOT TOO EARLY TO START PLANNING FOR
2024's SINGAPORE NIGHT RACE



Scan to find out more
about our early bird offer

For bookings, please contact our sales team
at conventions.singapore@fairmont.com

ACCOMODATION OPTIONS AT FAIRMONT SINGAPORE

Reservations are to be fully prepaid and non-cancellable.

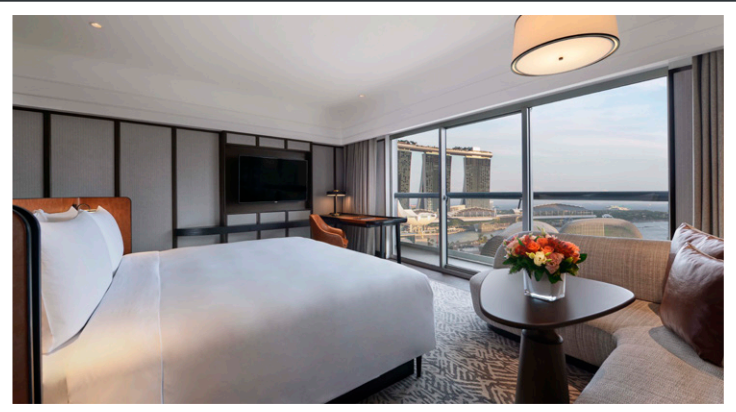


DELUXE ROOM

From \$1,039**

Minimum stay of 3 room nights from 15 to 17 September

[Click to View
Virtual Tour](#)



DELUXE HARBOUR VIEW ROOM

From \$2,259**

Minimum stay of 3 room nights from 15 to 17 September

[Click to View
Virtual Tour](#)



SIGNATURE SALON SUITE

From \$1,113**

Minimum stay of 3 room nights from 15 to 17 September

[Click to View
Virtual Tour](#)



FAIRMONT GOLD ROOM

*Inclusive of Lounge Access
(up to 2 pax)*

From \$1,709**

Minimum stay of 3 room nights from 15 to 17 September

[Click to View
Virtual Tour](#)



For bookings, please contact our sales team at conventions.singapore@fairmont.com.





2 Stamford Rd, Singapore 178882

For a bespoke package, please contact our sales team at
conventions.singapore@fairmont.com

Fairmont
SINGAPORE

swissôtel THE STAMFORD
SINGAPORE