

# ***PULLMAN BANGKOK HOTEL G***

# HOTEL LOCATION & ACCESS



# ***HOW YOUR STYLISH JOURNEY IN BANGKOK SHOULD LOOK LIKE..***



# PULLMAN BANGKOK HOTEL G AT A GLANCE



Located in the heart of Bangkok, one of Asia's most vibrant and exciting cities, the **5-star Pullman Bangkok Hotel G** is defined by **cutting-edge design** and a **creative ambience**. The chic Bangkok lifestyle hotel offers **469 rooms with a hip minimalist style**, contemporary comforts, and **floor-to-ceiling windows** with panoramic views of Bangkok skyline. With its finger on the city pulse, you can enjoy Bangkok's famous nightlife, shop 'till you drop in palatial-shopping malls in town or take a tour of nearby historical & cultural attractions.

## ***ROOM & SUITES***



# ROOMS & SUITES



## ***PREMIUM DELUXE ROOMS (59)***

---

The 34 sq.m Premium Deluxe Rooms showcase contemporary décor with wooden flooring, modern conveniences and floor-to-ceiling windows with scenic views of Bangkok. Stay connected with friends and family with complimentary Wi-Fi while enjoying the comfortable and cozy room.

## ***ROOM FEATURES***

---

### *Leisure*

- Complimentary coffee and tea

### *To keep you connected*

- High-speed Wi-Fi internet access

### *For your comfort*

- The signature Pullman bedding and an extensive pillow menu
- Spacious bathrooms with a separate bathtub and shower
- C.O. Bigelow bathroom amenities



# ROOMS & SUITES



## ***G DELUXE ROOMS (187)***

---

Located on the 18<sup>th</sup> – 26<sup>th</sup> floor, the chic 34 sq.m hotel rooms feature white wooden flooring, full connectivity for your mobile life with Wi-Fi, and floor-to-ceiling windows with dramatic views across Bangkok.

### ***ROOM FEATURES***

---

#### *Leisure*

- Complimentary coffee and tea

#### *To keep you connected*

- High-speed Wi-Fi internet access

#### *For your comfort*

- The signature Pullman bedding and an extensive pillow menu
- Spacious bathrooms with a separate bathtub and shower
- C.O. Bigelow bathroom amenities



# ROOMS & SUITES



## ***EXECUTIVE ROOMS (69)***

---

The sophisticated 34 sq.m Executive Rooms are defined by wooden floors, modern furnishings and floor-to-ceiling windows with a panoramic view of Bangkok city. Perfect for business travelers, this room comes along with Executive Club Lounge access and a host of benefits including complimentary breakfast, evening cocktails, high-speed Wi-Fi internet access and much more.

## ***ROOM FEATURES***

---

### *Leisure*

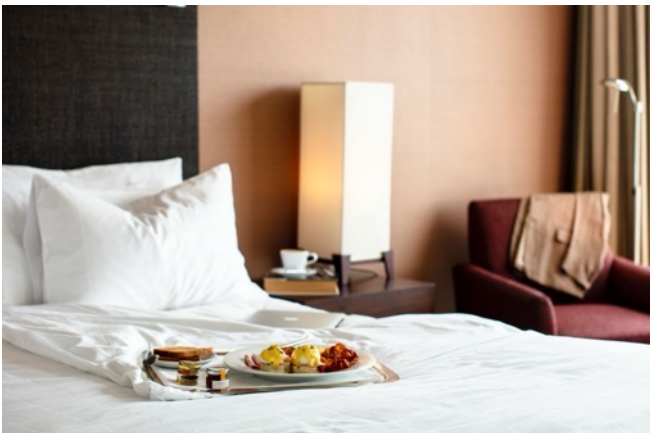
- Access to the Executive Lounge with special benefits
- Personalized private check-in and butler service

### *To keep you connected*

- High-speed Wi-Fi internet access

### *For your comfort*

- The signature Pullman bedding and an extensive pillow menu
- Spacious bathrooms with a separate bathtub and shower
- C.O. Bigelow bathroom amenities



# ROOMS & SUITES



## ***EXECUTIVE SUITES (21)***

---

Located on the 29<sup>th</sup> – 35<sup>th</sup> floors, the elegant 77 sqm. Executive Suites are perfectly poised to enjoy the dazzling view of Bangkok's majestic cityscape. Defined by its plush dark color décor, wooden flooring and floor-to-ceiling windows, the suites are characterized by a spacious living room and separate bedroom.

## ***ROOM FEATURES***

---

### *Leisure*

- Access to the Executive Lounge with special benefits
- Personalized private check-in

### *To keep you connected*

- High-speed Wi-Fi internet access

### *For your comfort*

- The signature Pullman bedding and an extensive pillow menu
- Spacious bathrooms with a separate bathtub and shower
- C.O. Bigelow bathroom amenities



# ROOMS & SUITES



## **G SUITES (10)**

---

Located on the 18<sup>th</sup> – 22<sup>nd</sup> floors, the sophisticated 77 sq.m suites feature a subtle and contemporary design with floor-to-ceiling windows, white wooden flooring, a large living area and breathtaking of the Bangkok skyline.

### **ROOM FEATURES**

---

#### *Leisure*

- Access to the Executive Lounge with special benefits
- Personalized private check-in

#### *To keep you connected*

- High-speed Wi-Fi internet access

#### *For your comfort*

- The signature Pullman bedding and an extensive pillow menu
- Spacious bathrooms with a separate bathtub and shower
- C.O. Bigelow bathroom amenities










# *EVENT SPACE FOR OUT-OF-THE-BOX IDEAS*



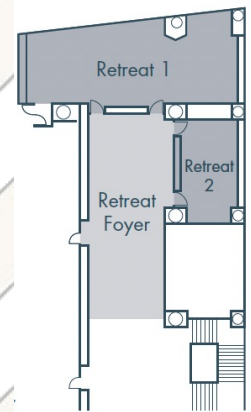
# EVENT SPACE FOR OUT-OF-THE-BOX IDEAS

## FUNCTION ROOMS CAPACITY

VENUE	FLOOR	SURFACE (m <sup>2</sup> )	DIMENSION (w x l)	HEIGHT (m)							
					I-SHAPE	U-SHAPE	CLASSROOM	THEATRE	COCKTAIL	BANQUET	BUFFET
BALLROOM 38	38	411	18x23	5.1	–	60	150	200	300	220	170
GALLERY 1/2	36	104	8x13	2.5	35	35	54	80	100	50	50
GALLERY 1 & 2	36	208	8x26	2.5	70	50	100	160	200	100	100
GALLERY 3	36	65	8x8	2.5	15	16	20	30	50	40	40
GALLERY 4	36	56	7x8	2.4	20	16	20	30	50	40	40
LIBRARY 1	24	34	4x8	2.6	12	–	–	–	–	–	–
LIBRARY 2	24	68	8x8	2.6	20	20	27	40	40	40	40
LIBRARY 3	24	34	4x8	2.6	12	–	–	–	–	–	–
LIBRARY 4	24	34	4x8	2.6	12	–	–	–	–	–	–
LIBRARY 5	24	34	4x8	2.6	12	12	16	24	–	–	–
RETREAT 1	3	75	6x15	2.8	32	30	35	70	70	60	60
RETREAT 2	3	28	4x7	2.8	12	12	16	20	–	10	–
TIVA	2	290	–	3.0	–	–	–	–	200	120	120

With its' contemporary conceptual design which can be tailored to individual client requirements, Pullman Bangkok Hotel G meeting rooms offer **creative spaces for creative minds**. From a brainstorming session, or lunch meeting to a year-end party or private celebration. Our facilities can accommodate all your needs.

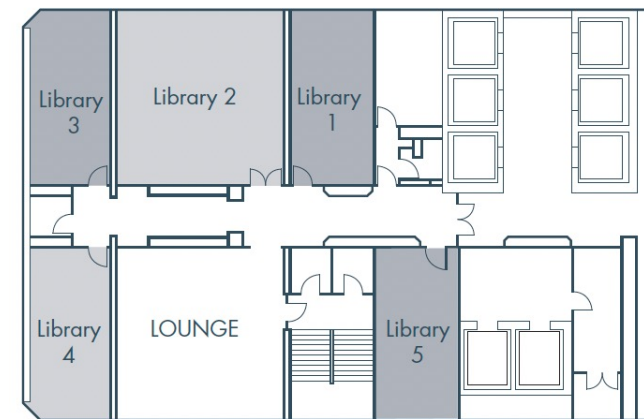
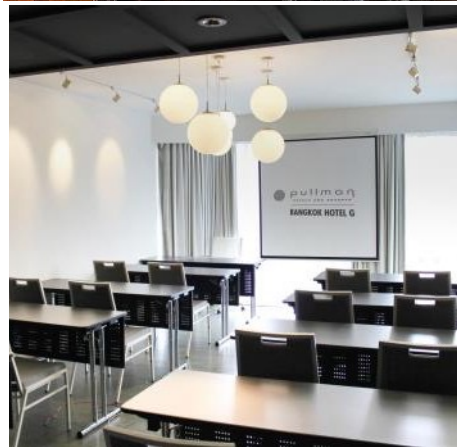
# ***EVENT SPACE FOR OUT-OF-THE-BOX IDEAS***



## ***THE RETREAT (3/F)***

Two meeting rooms designed to inspire and relax with modern décor and comfortable furnishings.

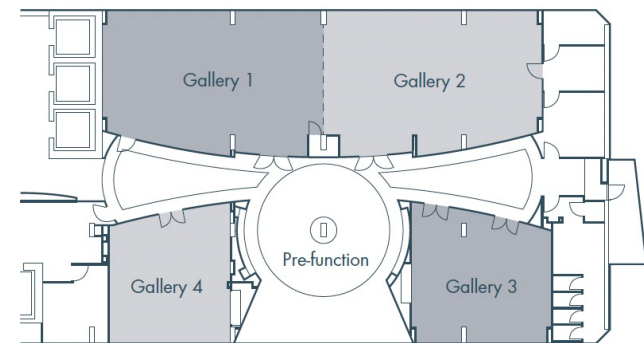
# EVENT SPACE FOR OUT-OF-THE-BOX IDEAS



## **LIBRARY 24 (24/F)**

Five meeting rooms with an extensive collection of current magazines and books as well as trendy lounge furniture and natural daylight.

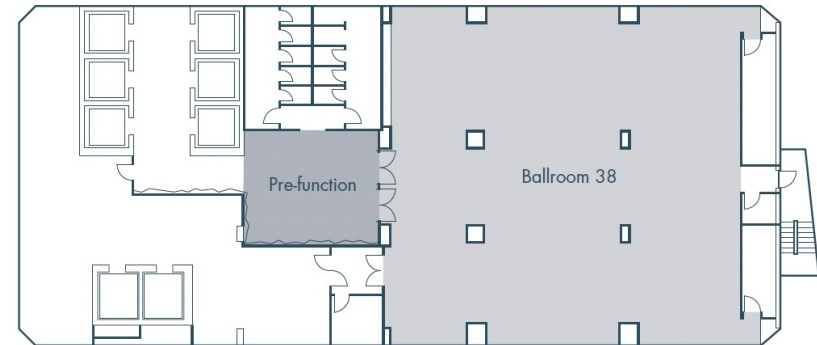
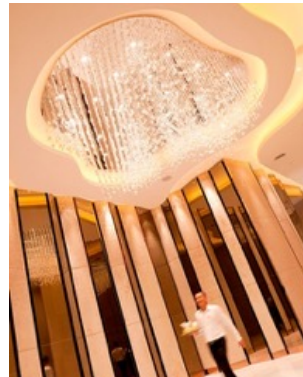
# ***EVENT SPACE FOR OUT-OF-THE-BOX IDEAS***



## ***GALLERY 36 (36/F)***

Four rooms transformed into New York style art galleries to inspire creative minds and provide engaging meeting spaces.

# EVENT SPACE FOR OUT-OF-THE-BOX IDEAS



## **BALLROOM 38 (38/F)**

A dazzling event venue of 411sqm, decorated with stunning chandeliers and shimmering gold furnishings. Situated on the 38<sup>th</sup> floor and commanding breathtaking panoramic city views.

# ***IN-VOGUE SPACES TO DINE & WINE***



# IN-VOGUE SPACE TO DINE & WINE



## 25 DEGREES BURGER, WINE & LIQUOR BAR (G/F)

“A stylish and quirky take on a traditional burger joint serving authentic American burger, a large selection of craft and draught beers, and signature cocktails.



Capacity: 60 seats (Terrace capacity 14 seats)  
Opening hours: 24/7



# IN-VOGUE SPACE TO MEET & MINGLE



## PLAYGROUND (M/F)

Brings the speak-easy concept into the 21<sup>st</sup> century, Playground is located on M Floor, offering the stylish space to meet & mingle.



Capacity: 40 seats  
Opening hours: Mon - Sun

playground



# IN-VOGUE SPACE FOR THE *DELICIOUS MEALS*



## ***TIVA URBAN THAITTORIA (2/F)***

The very best of East meets West from Thai street food entrees to 1-meter Italian pizzas, from live cooking stations to signature pastas, explore the Urban Thaittoria in the heart of Bangkok.



Capacity: 135 seats

Opening hours: Mon – Sun | Breakfast 6AM – 10.30AM

**tiva**  
Urban Thaittoria



# IN-VOGUE SPACE TO UNWIND



## ***EXECUTIVE LOUNGE (27/F)***

Located on the 27<sup>th</sup> floor, the Executive Club Lounge is an exclusive venue for guests of Executive rooms and Suites, offering a la carte breakfast, afternoon refreshments and evening sunset drinks.



Capacity: 50 seats

Opening hours: Mon – Sun, 6AM – 10PM



# IN-VOGUE SPACE TO DINE & WINE



---

## SCARLETT WINE BAR & RESTAURANT (37/F)

A chic venue on the 37<sup>th</sup> floor with breathtaking views from an open-air terrace, a fabulous French bistro menu, cheese and cold cuts, signature live fire grill, premium dry-aged meats, an extensive wine list and much more!



Capacity: 160 seats (Terrace capacity 40 seats)  
Opening hours: Daily from 5PM – late

---



SCARLETT  
WINE BAR & RESTAURANT



***RELAX & UNWIND***



# ***RELAX AND UNWIND***

## ***LE SPA BY HOTEL G (4/F)***

- Open daily 10AM – 10PM
- A sanctuary in the middle of Bangkok's hustle and bustle, offering specially designed treatments to help you rest, recover and recharge.

## ***FITNESS CENTER (5/F)***

- Open daily 24/7
- Fully equipped fitness center

## ***OUTDOOR SWIMMING POOL (5/F)***

- Open daily from 7AM – 10PM

## ***POOL BAR (5/F)***

- Open daily from 7AM – 10PM
- All-day selections of drinks and snacks