

PULLMAN BANGKOK HOTEL G

HOTEL LOCATION & ACCESS



HOW YOUR STYLISH JOURNEY IN BANGKOK SHOULD LOOK LIKE..



PULLMAN BANGKOK HOTEL G AT A GLANCE



Located in the heart of Bangkok, one of Asia's most vibrant and exciting cities, the **5-star Pullman Bangkok Hotel G** is defined by **cutting-edge design** and a **creative ambience**. The chic Bangkok lifestyle hotel offers **469 rooms with a hip minimalist style**, contemporary comforts, and **floor-to-ceiling windows** with panoramic views of Bangkok skyline. With its finger on the city pulse, you can enjoy Bangkok's famous nightlife, shop 'till you drop in palatial-shopping malls in town or take a tour of nearby historical & cultural attractions.



BANGKOK HOTEL G

ROOM & SUITES



ROOMS & SUITES



PREMIUM DELUXE ROOMS (59)

The 34 sq.m Premium Deluxe Rooms showcase contemporary décor with wooden flooring modern conveniences and floor-to-ceiling windows with scenic views of Bangkok. Stay connected with friends and family with complimentary Wi-Fi while enjoying the comfortable and cozy room.

ROOM FEATURES

Leisure

- Complimentary coffee and tea

To keep you connected

- High-speed Wi-Fi internet access

For your comfort

- The signature Pullman bedding and an extensive pillow menu
- Spacious bathrooms with a separate bathtub and shower
- C.O. Bigelow bathroom amenities



ROOMS & SUITES



G DELUXE ROOMS (187)

Located on the 18th – 26th floor, the chic 34 sq.m hotel rooms feature white wooden flooring, full connectivity for your mobile life with Wi-Fi, and floor-to-ceiling windows with dramatic views across Bangkok.

ROOM FEATURES

Leisure

- Complimentary coffee and tea

To keep you connected

- High-speed Wi-Fi internet access

For your comfort

- The signature Pullman bedding and an extensive pillow menu
- Spacious bathrooms with a separate bathtub and shower
- C.O. Bigelow bathroom amenities



ROOMS & SUITES



EXECUTIVE ROOMS (69)

The sophisticated 34 sq.m Executive Rooms are defined by wooden floors, modern furnishings and floor-to-ceiling windows with a panoramic view of Bangkok city. Perfect for business travelers, this room comes along with Executive Club Lounge access and a host of benefits including complimentary breakfast, evening cocktails, high-speed Wi-Fi internet access and much more.

ROOM FEATURES

Leisure

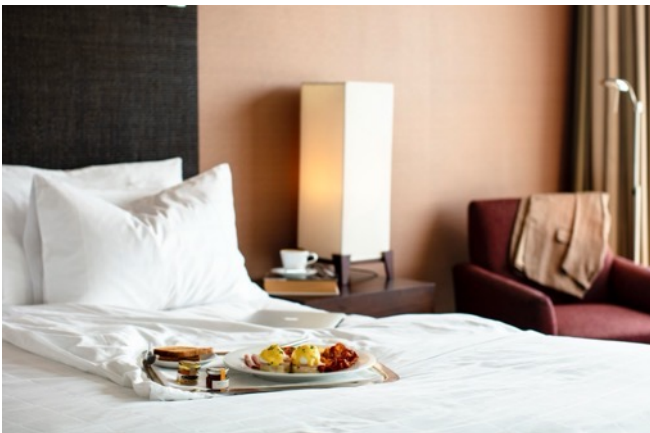
- Access to the Executive Lounge with special benefits
- Personalized private check-in and butler service

To keep you connected

- High-speed Wi-Fi internet access

For your comfort

- The signature Pullman bedding and an extensive pillow menu
- Spacious bathrooms with a separate bathtub and shower
- C.O. Bigelow bathroom amenities



ROOMS & SUITES



EXECUTIVE SUITES (21)

Located on the 29th – 35th floors, the elegant 77 sqm. Executive Suites are perfectly poised to enjoy the dazzling view of Bangkok's majestic cityscape. Defined by its plush dark color décor, wooden flooring and floor-to-ceiling windows, the suites are characterized by a spacious living room and separate bedroom.

ROOM FEATURES

Leisure

- Access to the Executive Lounge with special benefits
- Personalized private check-in

To keep you connected

- High-speed Wi-Fi internet access

For your comfort

- The signature Pullman bedding and an extensive pillow menu
- Spacious bathrooms with a separate bathtub and shower
- C.O. Bigelow bathroom amenities



ROOMS & SUITES



G SUITES (10)

Located on the 18th – 22nd floors, the sophisticated 77 sq.m suites feature a subtle and contemporary design with floor-to-ceiling windows, white wooden flooring, a large living area and breathtaking of the Bangkok skyline.

ROOM FEATURES

Leisure

- Access to the Executive Lounge with special benefits
- Personalized private check-in

To keep you connected

- High-speed Wi-Fi internet access

For your comfort

- The signature Pullman bedding and an extensive pillow menu
- Spacious bathrooms with a separate bathtub and shower
- C.O. Bigelow bathroom amenities










EVENT SPACE FOR OUT-OF-THE-BOX IDEAS



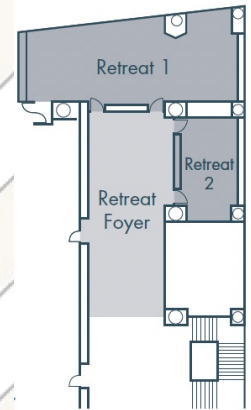
EVENT SPACE FOR OUT-OF-THE-BOX IDEAS

FUNCTION ROOMS CAPACITY

VENUE	FLOOR	SURFACE (m ²)	DIMENSION (w x l)	HEIGHT (m)							
					I-SHAPE	U-SHAPE	CLASSROOM	THEATRE	COCKTAIL	BANQUET	BUFFET
BALLROOM 38	38	411	18x23	5.1	-	60	150	200	300	220	170
GALLERY 1/2	36	104	8x13	2.5	35	35	54	80	100	50	50
GALLERY 1 & 2	36	208	8x26	2.5	70	50	100	160	200	100	100
GALLERY 3	36	65	8x8	2.5	15	16	20	30	50	40	40
GALLERY 4	36	56	7x8	2.4	20	16	20	30	50	40	40
LIBRARY 1	24	34	4x8	2.6	12	-	-	-	-	-	-
LIBRARY 2	24	68	8x8	2.6	20	20	27	40	40	40	40
LIBRARY 3	24	34	4x8	2.6	12	-	-	-	-	-	-
LIBRARY 4	24	34	4x8	2.6	12	-	-	-	-	-	-
LIBRARY 5	24	34	4x8	2.6	12	12	16	24	-	-	-
RETREAT 1	3	75	6x15	2.8	32	30	35	70	70	60	60
RETREAT 2	3	28	4x7	2.8	12	12	16	20	-	10	-
TIVA	2	290	-	3.0	-	-	-	-	200	120	120

With its' contemporary conceptual design which can be tailored to individual client requirements, Pullman Bangkok Hotel G meeting rooms offer **creative spaces for creative minds**. From a brainstorming session, or lunch meeting to a year-end party or private celebration. Our facilities can accommodate all your needs.

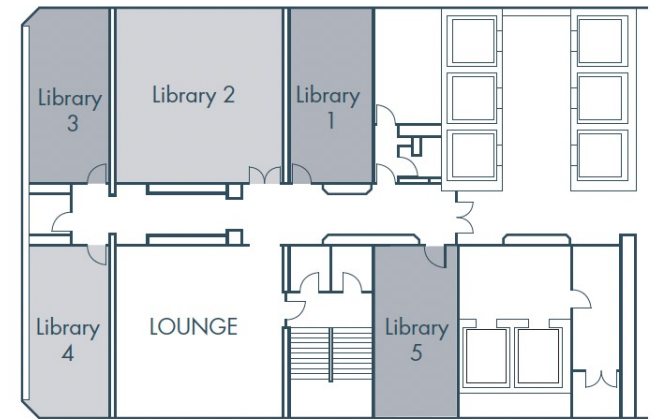
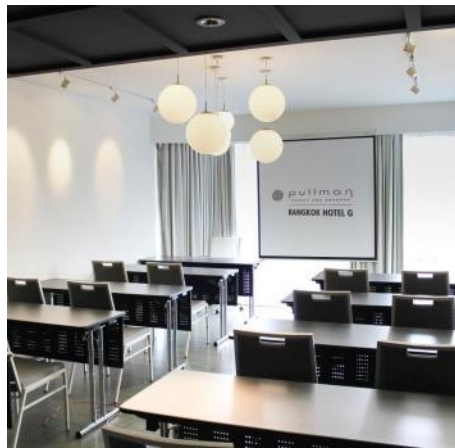
EVENT SPACE FOR OUT-OF-THE-BOX IDEAS



THE RETREAT (3/F)

Two meeting rooms designed to inspire and relax with modern décor and comfortable furnishings.

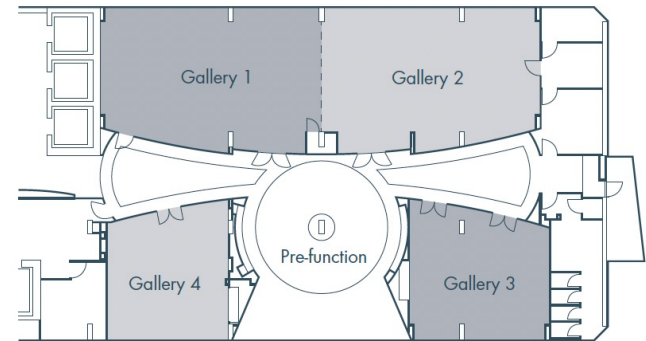
EVENT SPACE FOR OUT-OF-THE-BOX IDEAS



LIBRARY 24 (24/F)

Four meeting rooms with an extensive collection of current magazines and books as well as trendy lounge furniture and natural daylight.

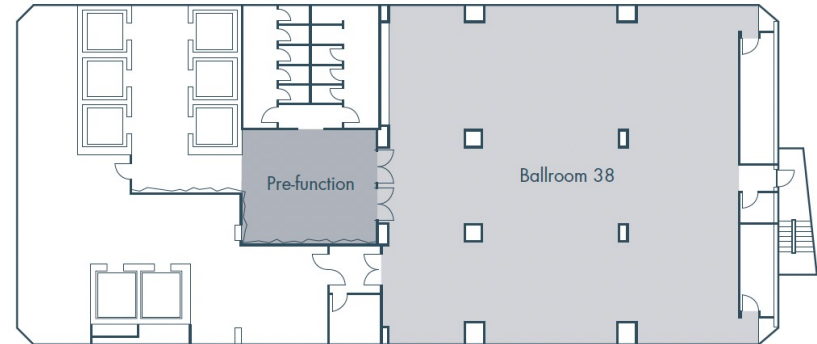
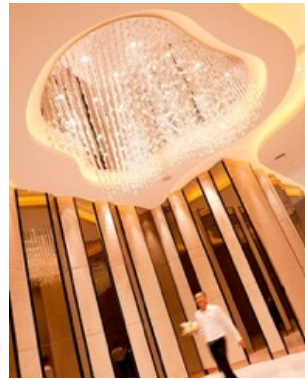
EVENT SPACE FOR OUT-OF-THE-BOX IDEAS



GALLERY 36 (36/F)

Four rooms transformed into New York style art galleries to inspire creative minds and provide engaging meeting spaces.

EVENT SPACE FOR OUT-OF-THE-BOX IDEAS



BALLROOM 38 (38/F)

A dazzling event venue of 411sqm, decorated with stunning chandeliers and shimmering gold furnishings. Situated on the 38th floor and commanding breathtaking panoramic city views.

***IN-VOGUE SPACES TO
DINE & WINE***



IN-VOGUE SPACE TO DINE & WINE



25 DEGREES BURGER, WINE & LIQUOR BAR (G/F)

A stylish and quirky take on a traditional burger joint serving authentic American burger, a large selection of craft and draught beers, and signature cocktails.



Capacity: 60 seats (Terrace capacity 14 seats)

Opening hours: 24/7



IN-VOGUE SPACE TO MEET & MINGLE



PLAYGROUND (Lobby)

Your ultimate retreat for relaxation and mingling, complete with irresistible coffee and curated bites. Join us for a latte, cappuccino, or your Starbucks favourite. We look forward to seeing you!

Opening hours: Daily
6.00am – 9.00pm

playground

IN-VOGUE SPACE TO MEET & MINGLE



PLAYGROUND (M/F)

Looking to host casual and intimate social events? Playground at M floor boasts of natural daylight with a customisable space.



Opening hours: Daily
6.00am – 9.00pm

playground



IN-VOGUE SPACE FOR THE DELICIOUS MEALS



TIVA URBAN THAITTORIA (2/F)

Bringing the best of both cuisines – the bold aromatics from around Thailand and the hearty flavours of Italy in one place.



Capacity: 135 seats

Opening hours:

Breakfast buffet: Weekday from 6.00am – 10.30am,
Weekend & Public Holidays from 6.00am – 11.00am

Lunch: Mon-Fri, 12.00pm – 2.30pm



IN-VOGUE SPACE TO UNWIND



EXECUTIVE LOUNGE (27/F)

Located on the 27th floor, the Executive Club Lounge is an exclusive venue for guests of Executive rooms and Suites, offering a la carte breakfast, afternoon refreshments and evening sunset drinks.



Capacity: 50 seats

Opening hours: Mon – Sun, 6am – 10pm



IN-VOGUE SPACE TO DINE & WINE



SCARLETT WINE BAR & RESTAURANT (37/F)

A chic venue on the 37th floor with breathtaking views from an open-air terrace, a fabulous French bistro menu, cheese and cold cuts, signature live fire grill, premium dry-aged meats, an extensive wine list and much more!



Capacity: 160 seats (Terrace capacity 40 seats)

Opening hours:

Monday - Saturday from 5pm – late

Sunday from 4pm - late





RELAX & UNWIND



RELAX AND UNWIND

G SPA (4/F)

- Open daily 10am – 10pm
- A sanctuary in the middle of Bangkok's hustle and bustle, offering specially designed treatments to help you rest, recover and recharge.

FITNESS CENTER (5/F)

- Open daily 24/7
- Fully equipped fitness center

OUTDOOR SWIMMING POOL (5/F)

- Open daily from 6am – 8pm

POOL BAR (5/F)

- Open daily from 7am – 8pm
- All-day selections of drinks and snacks