

Welcome to Swissôtel Sydney

swissôtel SYDNEY

### LOCATION

#### THE HEART OF THE CITY

Swissôtel Sydney puts you in the centre of the CBD, just a few steps away from the light rail and train, providing easy access to the city's key venues including the iconic State Theatre located directly opposite the hotel.

### GUEST ROOMS

#### REFRESHING. IN MORE WAYS THAN ONE

- 369 guest rooms and suites
- Executive Club Lounge
- 24-hour In-room Dining
- Smart TV's with Chromecast
- Separate walk-in shower and bath tub

### FACILITIES & SERVICES

#### SWISSÔTEL SYDNEY HIGHLIGHTS

- Centrally-located 5-star hotel with views across the city's CBD to the Blue Mountains
- In-house restaurant and bar
- Heated outdoor swimming pool
- Group check-in with pre-cut keys
- Group rooms assigned to the same floor
- Executive Lounge (for Executive Club Floor Rooms)
- Concierge services
- Beautifully-designed day spa
- Fully-equipped 24-hour fitness centre
- Laundry services
- Designated bus zone outside the hotel for large coach arrivals and departures

### RESTAURANT & BARS

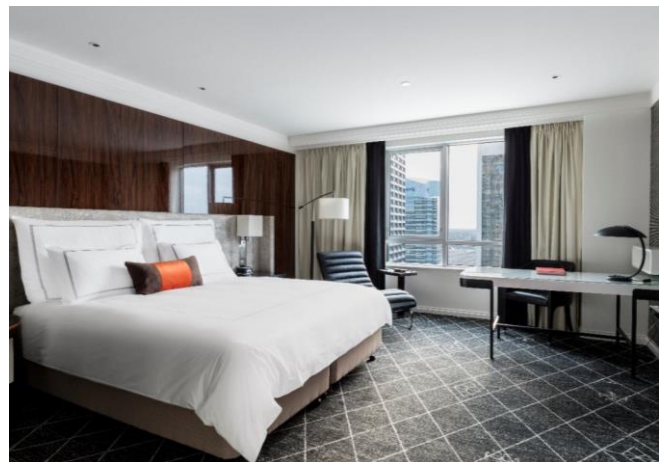
#### INNOVATIVE AND FULL OF FLAVOUR

Ten Stories: Presenting a unique food and beverage menu that is crafted using locally sourced and sustainable produce, our signature dishes are infused with a surprise ingredient – fresh honey sourced from our rooftop beehives.

Arches on Market: Swissôtel Sydney's luxurious new bar reminiscent of the grand palm court bars of yesteryear, with a wide-selection of cocktails, an extensive wine list and a food menu of refined classics.

[CLICK OR SCAN THE QR CODE TO](#)

[EXPLORE OUR HOTEL VIRTUAL TOUR.](#)



Swissôtel Sydney

68 Market Street, Sydney 2000 NSW, Australia

P: + 61 2 9238 8888

E: HA5D0-SM@swissotel.com

## CONFERENCES, MEETINGS & EVENTS

### MAKE AN IMPRESSION

Swissôtel Sydney offers state-of-the-art professional meeting and event facilities catering for up to 400 people. Whether for an international conference or an exclusive and more intimate meeting, our facilities, service and team are guaranteed to leave a lasting impression. The hotel also provides a dedicated specialist to ensure your event is a success.

### BLAXLAND BALLROOM

The Blaxland Ballroom is the ideal location for conferences, weddings, gala dinners and receptions. Whether theatre-style by day or a lavish themed event by night, our large ballroom can be transformed to accommodate all your needs. The heritage-listed Blaxland Ballroom is situated on Level 8 of Swissôtel Sydney, with a capacity for up to 400 people.

### BLAXLAND A

Blaxland A, the smaller of the sub-divided Blaxland Ballroom, is the perfect choice for your next event. This heritage-listed room has a capacity for up to 100 people in theatre-style.

### BLAXLAND B

Blaxland B, the larger of the sub-divided Blaxland Ballroom and can accommodate medium-sized functions of up to 200 guests.

### MAPLE ROOM

The bright and welcoming Maple Room is a versatile space with capacity of up to 100 guests. The venue showcases art deco-inspired flourishes include ceiling light boxes and timber embellishments. Maple room also includes its own discrete foyer area.



### BOARDROOMS

Swissôtel Sydney offers four luxurious boardrooms of varying sizes, providing space for up to 12 people. Located next to the Swissôtel Executive Club Lounge on Level 9, the boardrooms feature city views and natural light.

### ARCHES ON MARKET

Hold your next function at Swissôtel Sydney's luxurious new bar, Arches on Market. Perfect for small parties or a classic bar event, Arches on Market also offers a grand piano. Take in the breathtaking views and modern surrounds from our double height windows with panoramic vistas of downtown for your next event.



Swissôtel Sydney

68 Market Street, Sydney 2000 NSW, Australia

P: + 61 2 9238 8888

E: HA5D0-SM@swissotel.com

swissôtel SYDNEY

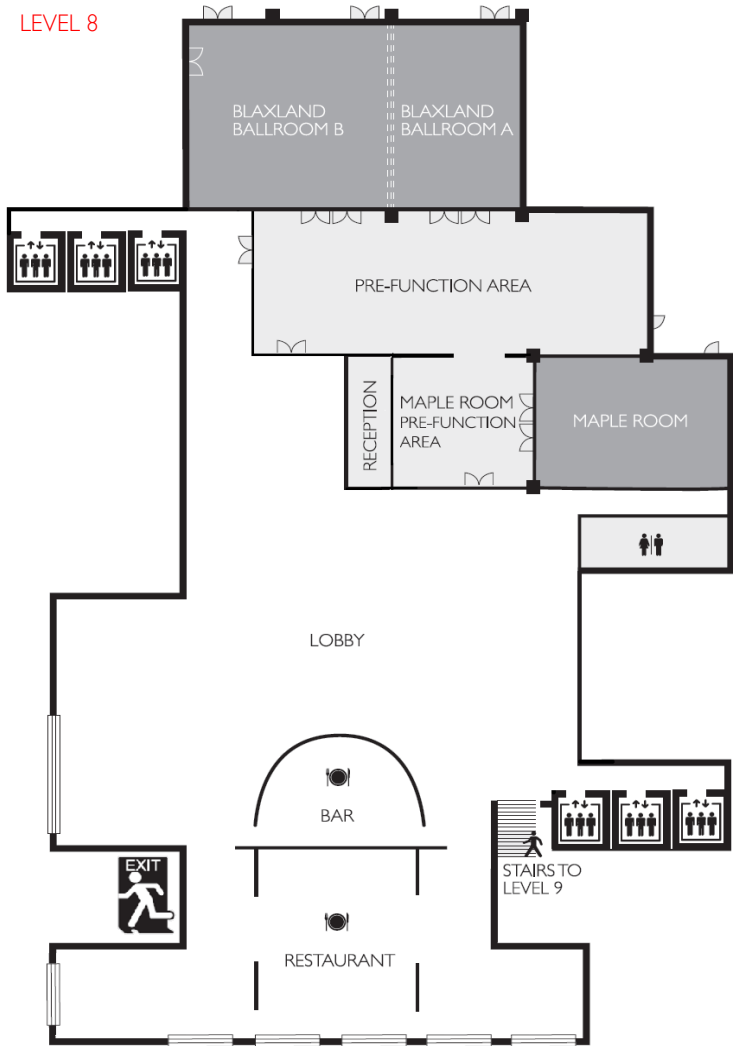


## CAPACITY CHART

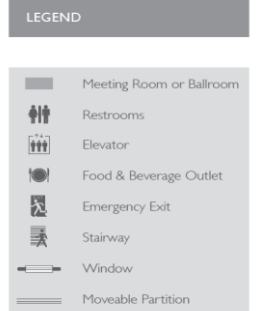
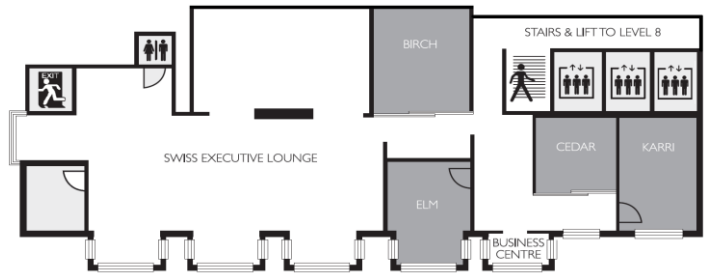
MEETING ROOMS	AREA M <sup>2</sup>	L	W	H	THEATRE STYLE	CLASS ROOM	BANQUET	BOARD ROOM	CABARET	U-SHAPE	RECEPTION/ COCKTAIL
<b>LEVEL 8</b>											
Blaxland Ballroom	400	24	17	2.7/4.35	400	210	240	-	240	-	400
Blaxland A	145	8.5	17	2.7/4.35	100	60	60	30	60	36	100
Blaxland B	255	15	17	2.7/4.35	200	120	100	33	100	39	200
Maple	130	15.5	8.5	2.7	100	60	60	30	60	36	100
Pre-function - Blaxland Ballroom	225	25	9	2.6	-	-	-	-	-	-	250
Pre-function - Maple	81	9	9	2.6	-	-	-	-	-	-	40
<b>LEVEL 9</b>											
Cedar	17	5.2	3.2	2.6	-	-	-	8	-	-	-
Karri	27	6.7	4.1	2.6	-	-	-	12	-	-	-
Birch	26	6.5	4	2.6	-	-	-	12	-	-	-
Elm	19	4.7	4	2.6	-	-	-	8	-	-	-

## FLOORPLANS

### LEVEL 8



### LEVEL 9



\*Images are not to scale



Swissôtel Sydney  
 68 Market Street, Sydney 2000 NSW, Australia  
 P: + 61 2 9238 8888  
 E: HA5D0-SM@swissotel.com

swissôtel SYDNEY