



Welcome

TO SWISSOTEL SYDNEY

Life is a journey. Live it well.

  @swissotelsydney

 www.swissotelsydney.com.au



Arches

Contemporary drinks,
delicious share plates &
old school charm

Arches all day dining | 12pm - 9pm



View menu here

Heated Rooftop Pool

An aerial photograph of a rooftop pool deck. The pool is a vibrant blue, occupying the upper left portion of the frame. The deck is made of light-colored wooden planks. Along the edge of the pool, there are several lounge chairs with teal cushions. In the center of the deck, there are two sets of circular lounge furniture, each consisting of three white round chairs with teal cushions and a small white round table. The scene is brightly lit, casting shadows on the deck.

Level 10 | Open 6am - 10pm daily



ACCESS 5% OFF ACCOMODATION



**FREE TO JOIN
START EARNING POINTS TODAY
ON ACCOMODATION, DINING & MORE**

HOTELS, TRAVEL, DINING, EXPERIENCES,
REWARDS. ALL IN ONE PLACE. ALL FOR YOU.





Ten Stories Restaurant

Breakfast available daily from 6:30am

Dinner available Wednesday - Saturday from 5pm





Link your Qantas Frequent Flyer & Accor Live Limitless accounts and be rewarded

By linking these two loyalty programmes you can get rewarded when you fly on Qantas flights & stay in Accor Asia Pacific properties.

That's in addition to the usual awards of your current programmes.

Earn rewards more often & more quickly. Subject to status and eligibility.



Join today





Signature cocktails,
wines & craft beers

Arches beverage service | 12pm - late

Arches

Spa & Sport

Level 10

Monday to Tuesday: 9am – 7pm

Wednesday: Closed

Thursday to Sunday: 9am – 7pm

Public Holidays: 10am – 5pm

Experience

profound

relaxation...



Book now!



In Room Dining

Looking for Breakfast,
Lunch, Dinner or a
Midnight Snack?

Scan the QR code on
your desk to view the full
menu & dining bundles.



swissôtel SYDNEY



swissôtel SYDNEY

Fitness Centre

Level 10 | Open 24/7

MEETING PLANNER

MAKE EVERY MEETING **rewarding**



Points & Perks.

Earn 1 Status & 1 Rewards point for every 2 Euros spent.



Pay your way.

Use your Reward points to pay for up to 15% of your bill.



More power to you.

Transfer your Reward points to other members of ALL.



Your points. Your call.

Redeem them for hotel stays, shopping online and more.



ACCOR · LIVE LIMITLESS

JOIN NOW



Book your next event at Swissotel

Arches Hour

Mon - Fri | 5:30 - 6:30
Saturday & Sunday | 4:00 - 6:00

Join us Under the Arches for
discounted cocktails, spirits,
wine & beer.

Menus may vary.

Arches



Fancy a drink?





Event Spaces

Enquire with reception today



2 Courses for \$59 or 3 Courses for \$69

Accor Plus Members receive
exclusive price.



Find out more



Executive Lounge

Level 9 | Access available from 7am





Arches

Arches Afternoon
Tea, available daily
from 1-4pm.

Reservations are
kindly required.



Book now!

Vitality

Vitality is at the heart of everything we do.

It's about finding the perfect balance between energy and tranquility, movement and stillness, exercise and relaxation. Recharge in our 24-hour fitness suite, unwind at the spa, or take a dip in our outdoor heated pool.

We also offer Vitality dishes throughout Swissotel Sydney. Whether you dine in Ten Stories, Arches, In Room or Poolside, rest assured we have curated dishes to satisfy both your taste buds and your nutritional requirements.



swissôtel SYDNEY

Boardrooms by the Hour

Level 9 | Enquire with reception today



ONEA



Breakfast Bundles

OneA Cafe | Next to Myer entrance



Sustainability Practices

Tips for Your Stay at Swissotel Sydney:

Remove Your Key Card

When leaving the room, take your key card with you to ensure lights and air conditioning are switched off, helping to save energy.

Manage Air Conditioning

Keep aircon temperatures moderate (22-24°C) to reduce energy consumption.

Shorter Showers

Help conserve water by reducing shower times.

Reuse Program

We encourage the reuse of shopping bags and water bottles, including the Just Water available in your room. Also use the available PÜROVEL guest products to minimise single use plastic.

Towels

Kindly hang your towels to reuse them, or leave them on the bathroom floor if they need replacing.

Bed Linen

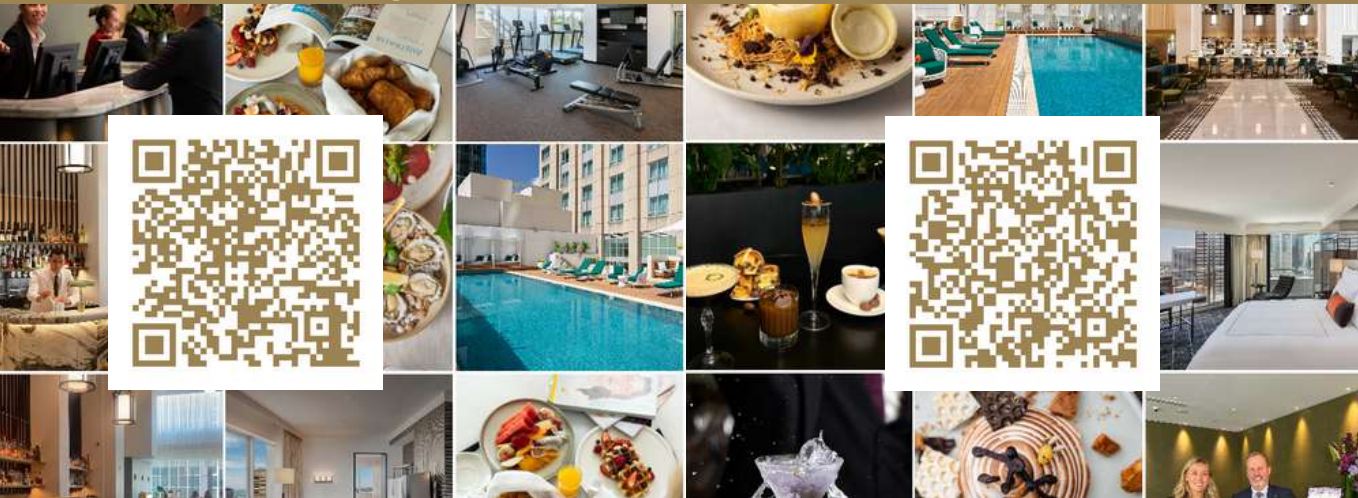
To save energy and water, sheets are customarily changed after each stay unless otherwise requested.



Let's get social

Follow us on Instagram 

Follow us on Facebook 



Don't forget to tag us in your posts!

@swissotelsydney

swissotel sydney