



pullman
HOTELS AND RESORTS

ROTORUA

MEETINGS & EVENTS

THE HOTEL



LOCATION

Situated in the heart of the city and moments away from the lakefront, Pullman Rotorua is the perfect base to explore the region's geothermal paradise for adventures, and conference delegates alike.

Pullman is surrounded by surreal scenery and iconic attractions. Discover shooting geysers, bubbling mud, natural hot springs and magical forests.





New & cosmopolitan, Pullman Rotorua is the city's only 5-star international hotel.

HOTEL

- 130 contemporary and comfortable rooms
- Barrel & Co Bar and Grill with modern NZ grill cuisine
- Fitness center
- Valet Parking - 25.0 per per day

CONFERENCING

- 5 dynamic event spaces for up to 150 delegates
- Complimentary Wi-Fi
- State-of-the-art Equipment
- Natural Daylight
- Pre-function area

EVENTS

- Meetings
- Conferences
- Executive retreats
- Launches
- Private celebrations



ROOM CAPACITIES

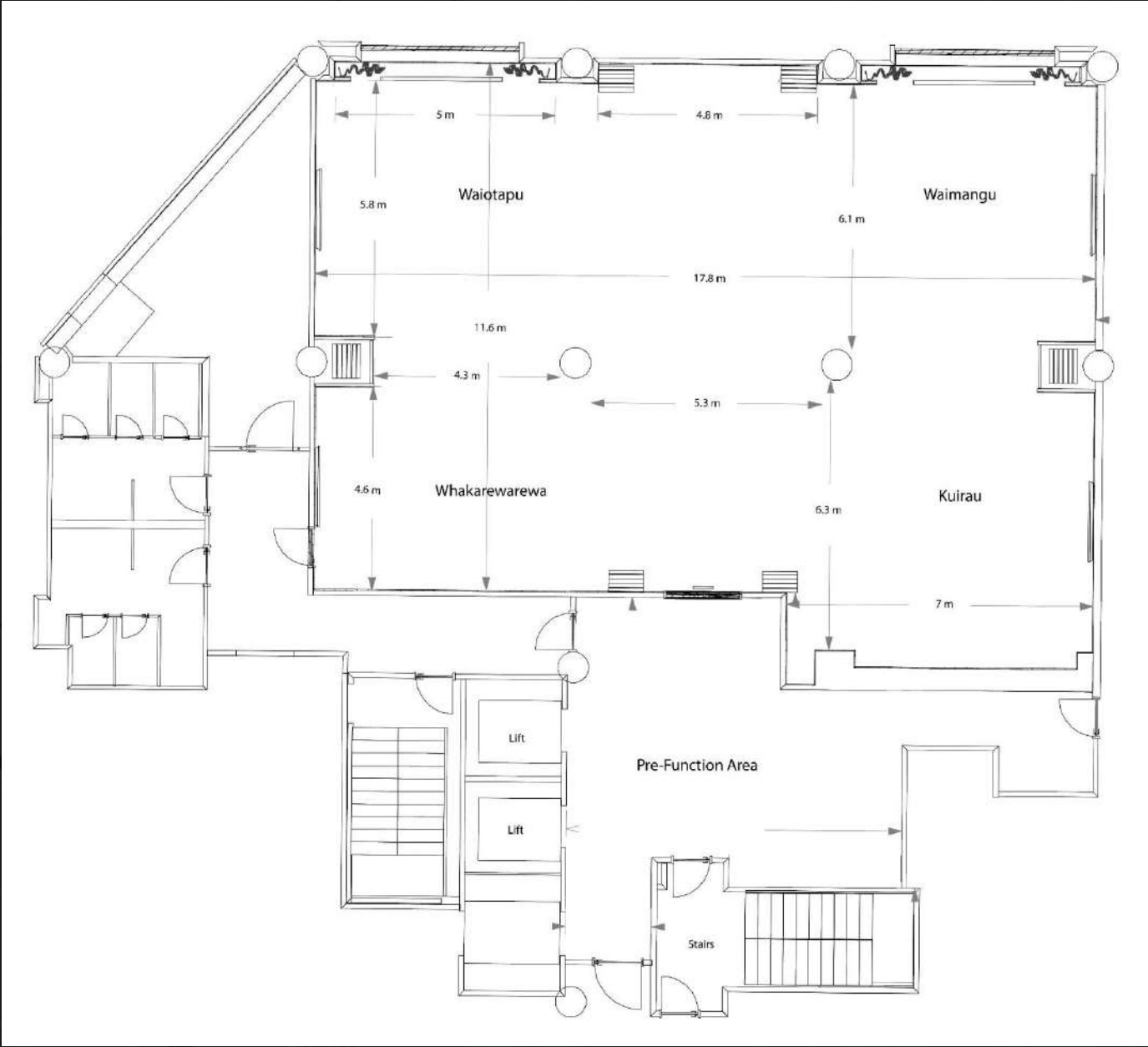
GROUND FLOOR & LEVEL ONE

MEETING ROOMS	AREA(M ²)	CEILING	U-SHAPE (SINGLE)	CLASSROOM	BOARD-ROOM	THEATRE	BANQUET DINNER	COCKTAIL
FIRST FLOOR								
Te Taumata <i>Rooms combined</i>	220	2.4	-	72	-	150	96	150
Whakarewarewa / Waiotapu	92	2.4	-	36	-	70	40	70
Waimangu / Kuirau	82	2.4	-	36	-	70	40	70
LOBBY LEVEL								
Pukaki	82	3	-	16	12	50	32	50
Arawa Boardroom	32	3	-	-	12	-	-	-
Mokoia	114	3	-	-	-	70	48	70



FLOOR PLANS

LEVEL ONE



WHAKAREWAREWA / WAIOTAPU

FIRST FLOOR



WAIMANGU / KUIRAU

FIRST FLOOR



TE TAUMATA

FIRST FLOOR



PUKAKI

LOBBY LEVEL



ARAWA BOARDROOM

LOBBY LEVEL



MOKOIA

LOBBY LEVEL





ROOMS & SUITES

PULLMAN ROTORUA

SUPERIOR ROOM



SUPERIOR ROOM, TWO QUEEN BEDS



DELUXE ROOM



DELUXE ROOM



EXECUTIVE SUITE



BARREL & CO BAR AND GRILL



PULLMAN FITNESS





pullman
HOTELS AND RESORTS

ROTORUA