



ADMIRAL HOTEL

Manila

MALLERY COLLECTION

Meaningful. MEMORABLE.
Moments.



GALLERY

HOTEL
COLLECTION



STEP INTO A PLACE OF *grandeur and refinement*

Admiral Hotel Manila – MGallery is a gateway to the city's vibrant past & present, the reimagined hotel is designed to evoke Manila's Golden Age with its Filipino-Spanish and Art Deco architecture & design elements reinterpreted with contemporary aesthetics and touches for Instagram-ready spots.

Find us along Roxas Boulevard, with the best views of Manila Bay. We are right in the middle of it all. From buzzing bars and restaurants to hidden green spaces to get lost in, shops for retail therapy, historical landmarks and more, you are never far from it all. The best part: The Ninoy Aquino International Airport is only a 30-minute drive from here.

Come sleep with us in Manila and relive the glamour of the city's golden era with our 123 rooms with luxury furnishings, ample workspace, and indulgent bathroom amenities to keep you clean as a whistle.

We are excited to spend time with you and make memorable and meaningful moments.



The best place for all *ocasión*

The reimaged Admiral Hotel Manila – MGallery, with its contemporary versatile spaces, is once again set to be the epicenter of social gatherings and corporate events.

Whether you're planning a lavish wedding, an intimate dinner, a launch event, or a bespoke social event, make Admiral Hotel the sophisticated setting for your success story.

Your event venue of *choice*

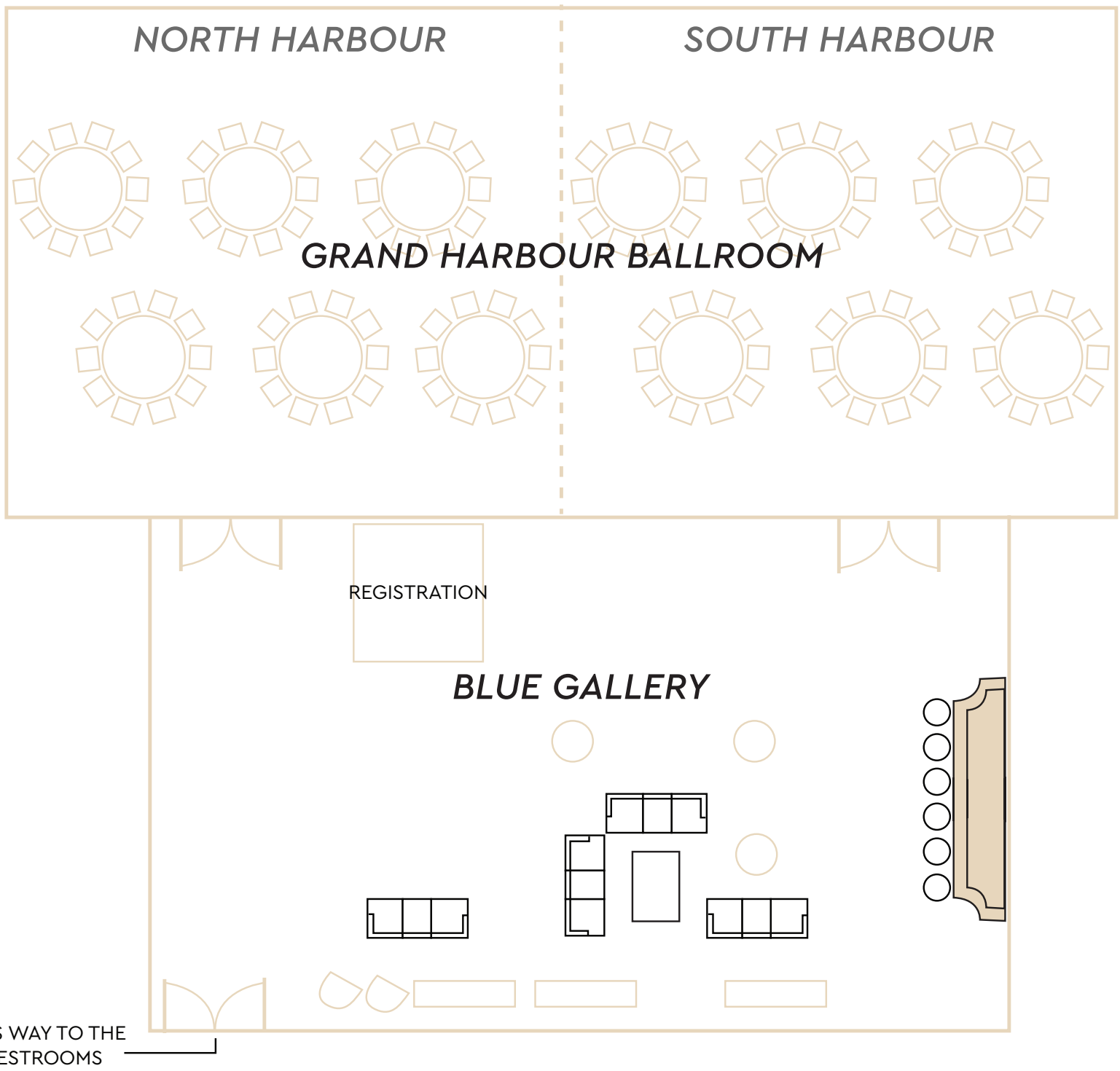
Grand Harbour Ballroom

Bring the party to this iconic venue. Spread over 196 square meters, the Grand Harbour Ballroom combines a distinctive design & elegant environment with state-of-the-art audio-visual technology. With nautical tones and textures that reflect Manila Bay, exquisite and stylish chandeliers, it is tailor-made for any event you have in mind. For smaller functions, the South & North Harbour are excellent options

The Blue Gallery

With its elegant interiors and well-equipped bar, the Blue Gallery is the best place to get the event started with pre-function cocktails and coffee breaks.





	GRAND HARBOUR BALLROOM (North & South Harbour Combined)	NORTH / SOUTH HARBOUR BALLROOM	THE BLUE GALLERY (Pre-Function Area)
SURFACE AREA SQM	196	96	135
DIMENSIONS L (M) X W (M)	20 × 9.7	10 × 9.7	15.4 × 8.7
HEIGHT (M)	192	96	135
THEATER	130	65	<i>Speak with your event specialist on how you would like to have this pre-function area arranged</i>
CLASSROOM	80	40	
U-SHAPE	60	20	
HALLOW SQUARE	60	40	
BOARDROOM	70	35	
BANQUET (10 Guests/Table)	120	60	
COCKTAIL	180	90	

A vertical collage of three images showcasing a luxurious interior. The top image shows a large, multi-tiered crystal chandelier with many hanging prisms. The middle image shows a dining table set for a meal with white linens, glassware, and a centerpiece of pink and white flowers. The bottom image shows a bed with white linens and a patterned pillow. The text 'MEETINGS in style' is overlaid on the middle image.

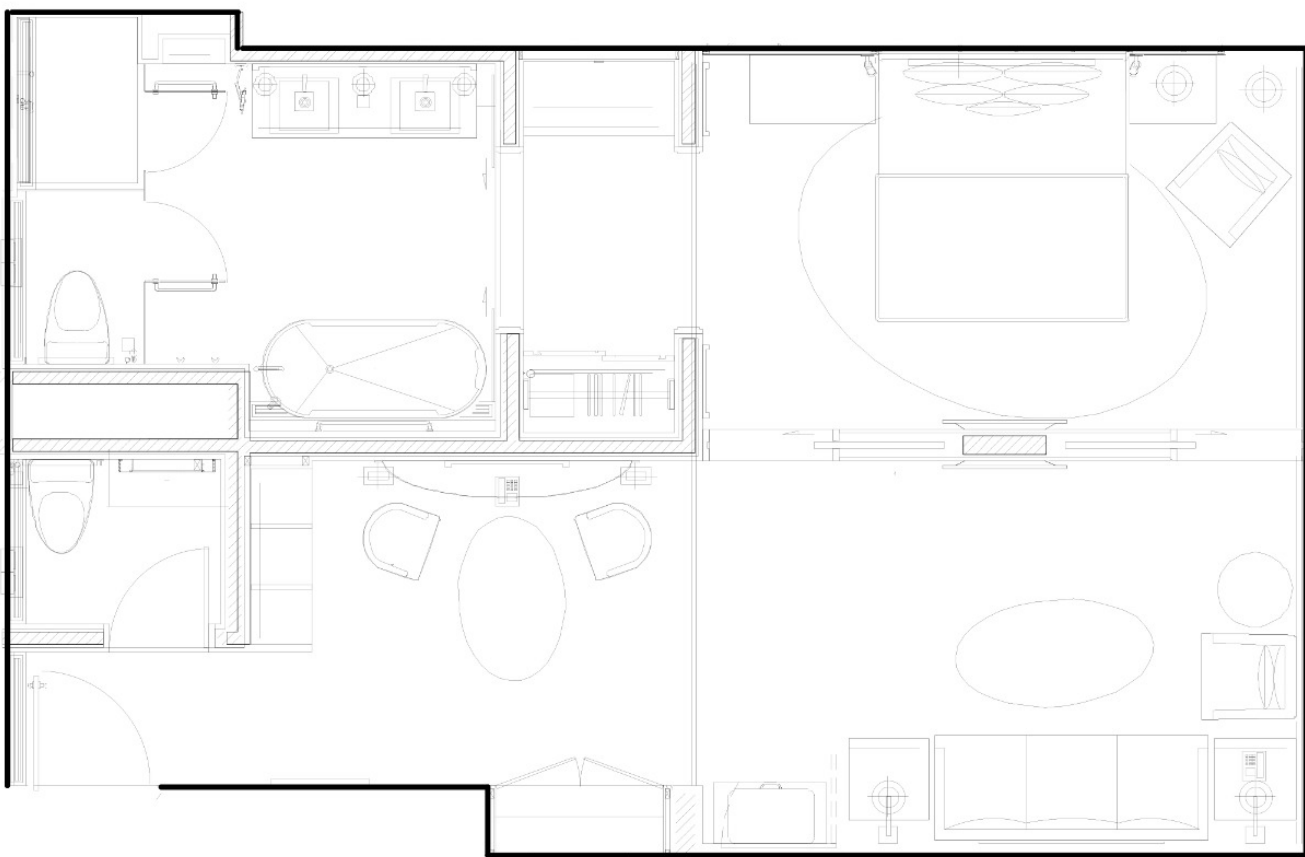
MEETINGS
in style



EXECUTIVE SUITE

Confidential Board Meeting • International Haute Cuisine • Romantic Proposal Date • Ultimate Private Celebration • Exclusive Product Launches

Echoing the spirit of Old Manila, these corner suites feature fantastic bay views and include a living room and dining room. Amenities include luxury bed linen, premium bath amenities, SAMSUNG LED TV with Bose soundbar, Nespresso coffee machine, work desk, and Club Lounge access. This elegant suite is perfect for a staycation or even staging an intimate corporate meeting at the living room. With this cozy and stylish suite, you can work from your room and stay connected to the world. Executive Suite can fit up to 15 pax on any meeting events.

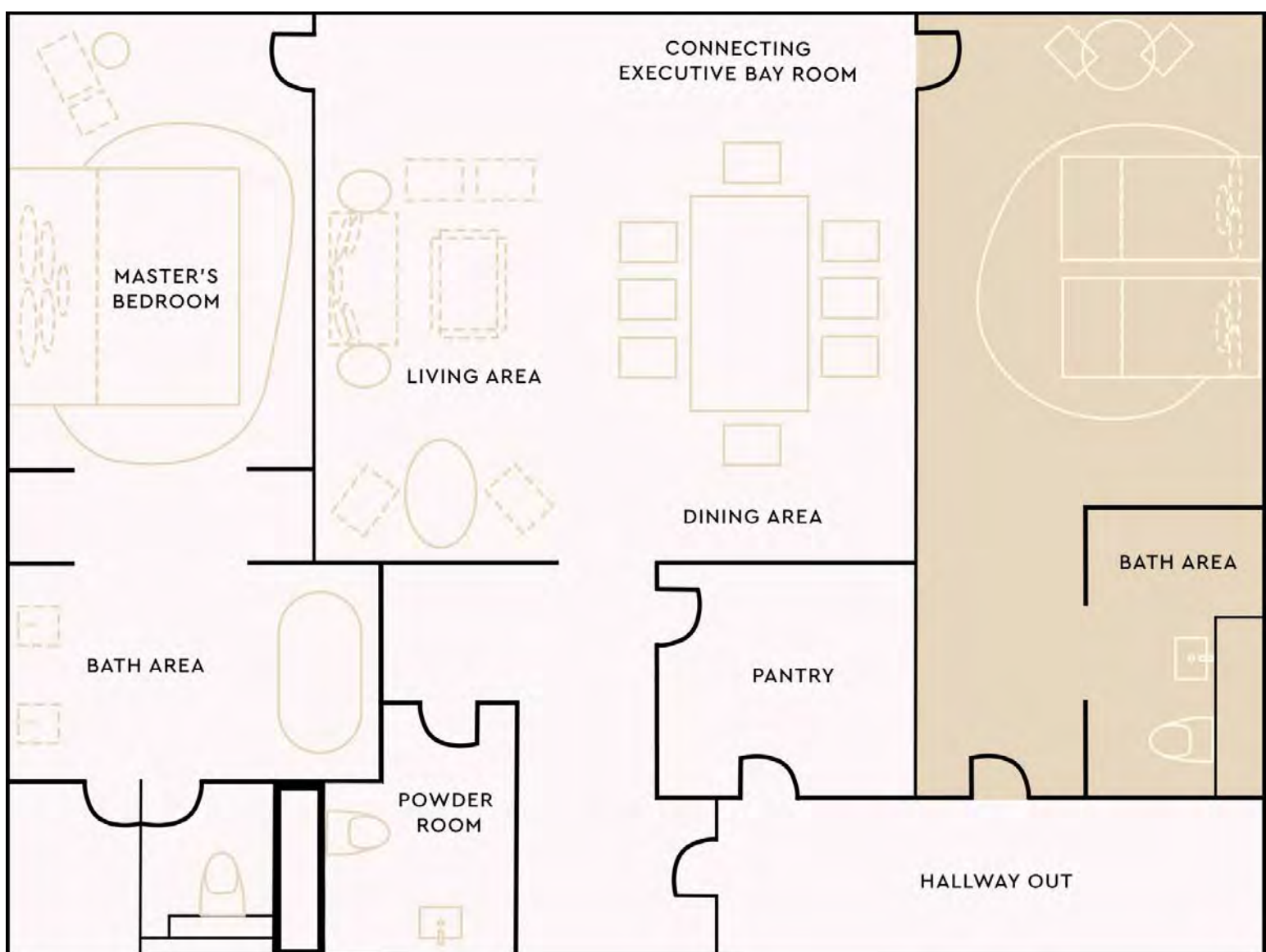




PRESIDENTIAL SUITE

Confidential Board Meeting • Luxury Filipino Gourmet Experience • International Haute Cuisine • Romantic Proposal Date • Ultimate Private Celebration • Exclusive Product Launches

Step into luxury at the Presidential Suite, adorned with objets d'art and offering sweeping bay views. Spread over 108 sqm, it features a spacious bedroom, living, and dining space. Amenities include an oversized bathtub, premium bath amenities, LED TV with Bose soundbar, Nespresso machine, and Club Lounge access. Presidential Suite accommodates up to 20 pax ideal for cocktails or intimate gatherings.



A romantic couple is shown in a restaurant setting. The man, on the left, is wearing a dark, vertically-pleated shirt and is leaning in to kiss the woman on the cheek. The woman, on the right, has long, wavy brown hair and is wearing a shimmering, dark, sequined dress. She is looking down with a slight smile. The background features a decorative wooden lattice with a large circular motif. The right side of the image is split, showing a dining table with white linens, gold-rimmed plates, and wine glasses. A vase of pink and white flowers sits on the table. The overall atmosphere is elegant and intimate.

MEET *and dine*

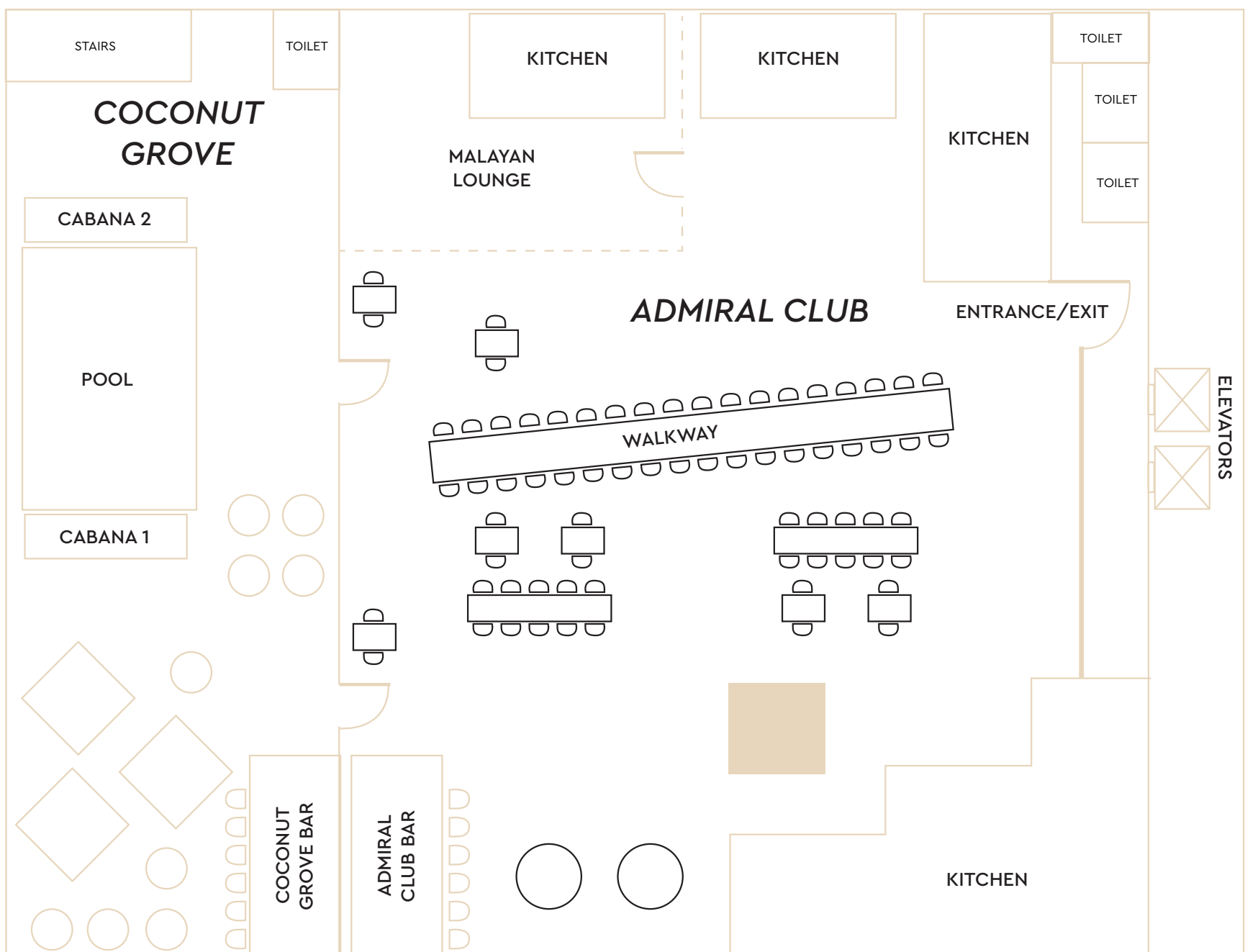


ADMIRAL CLUB MANILA BAY

Wedding receptions • Debuts • Product Launches
Fashion Shows • Beauty Pageants • Wine Dinners

Nestled at the stunning skyline and bay view of Manila, Admiral Club Manila Bay is the perfect place for your timeless moments. Savor the exquisite interiors along with the unique catwalk table with 3D video mapping feature. Admiral Club Manila Bay is the place for great celebrations with up to 250 pax attendees.

MANILA BAY SUNSET



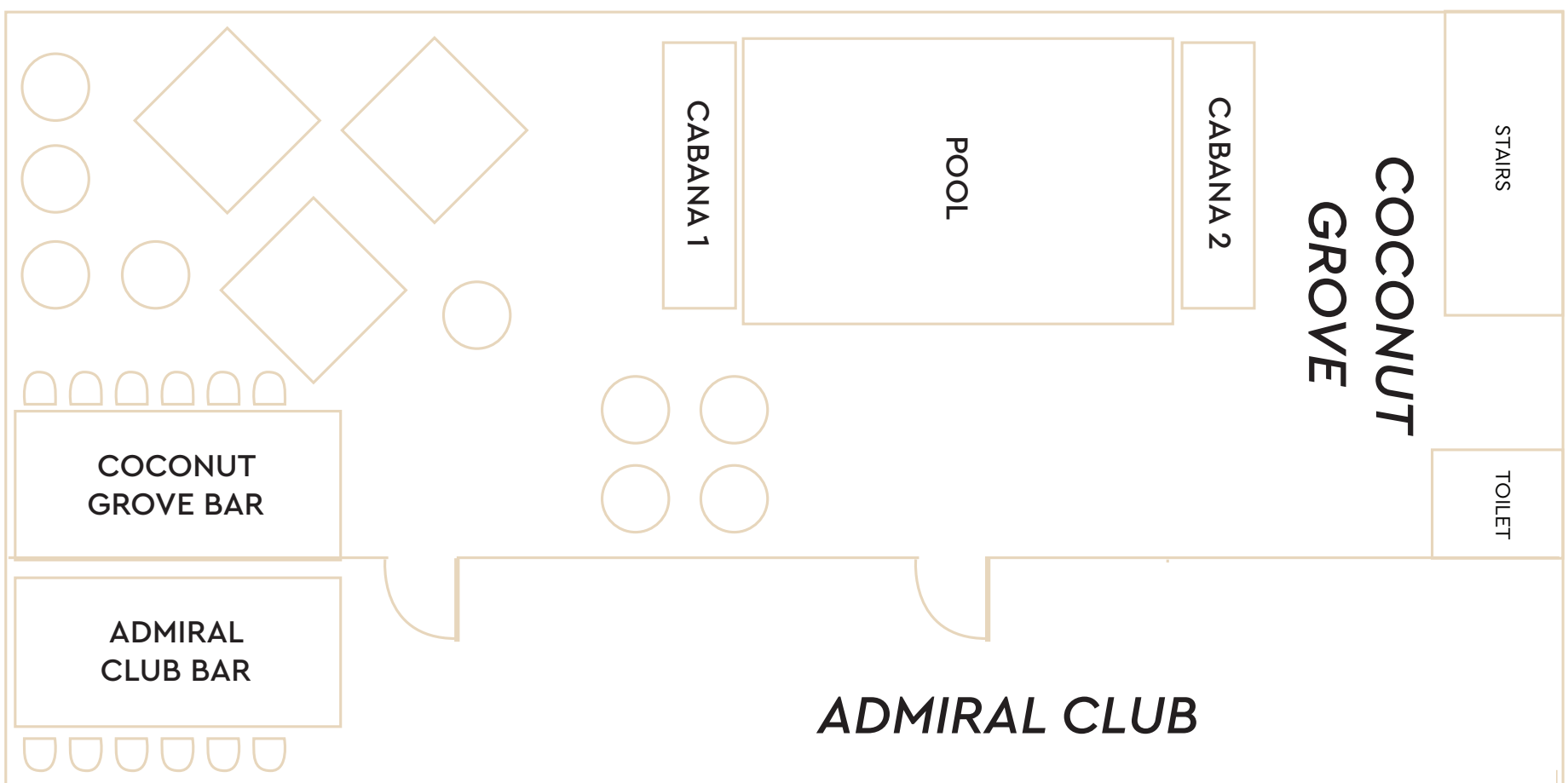


COCONUT GROVE

Al fresco Get-togethers • Social Celebrations
 Wedding Ceremonies • Sunset Soirées
 Fashion Shows

Experience a fusion of Miami party vibes and Manila's tropical flair at The Bar, a rooftop destination. Enjoy panoramic Manila Bay views, specialty crafted cocktails, and classic bar bites with a twist. Groove to funky soundtracks spun by in-house DJs as you savor stunning sunsets. Coconut Grove is the perfect rooftop venue for up to 100 pax.

MANILA BAY SUNSET

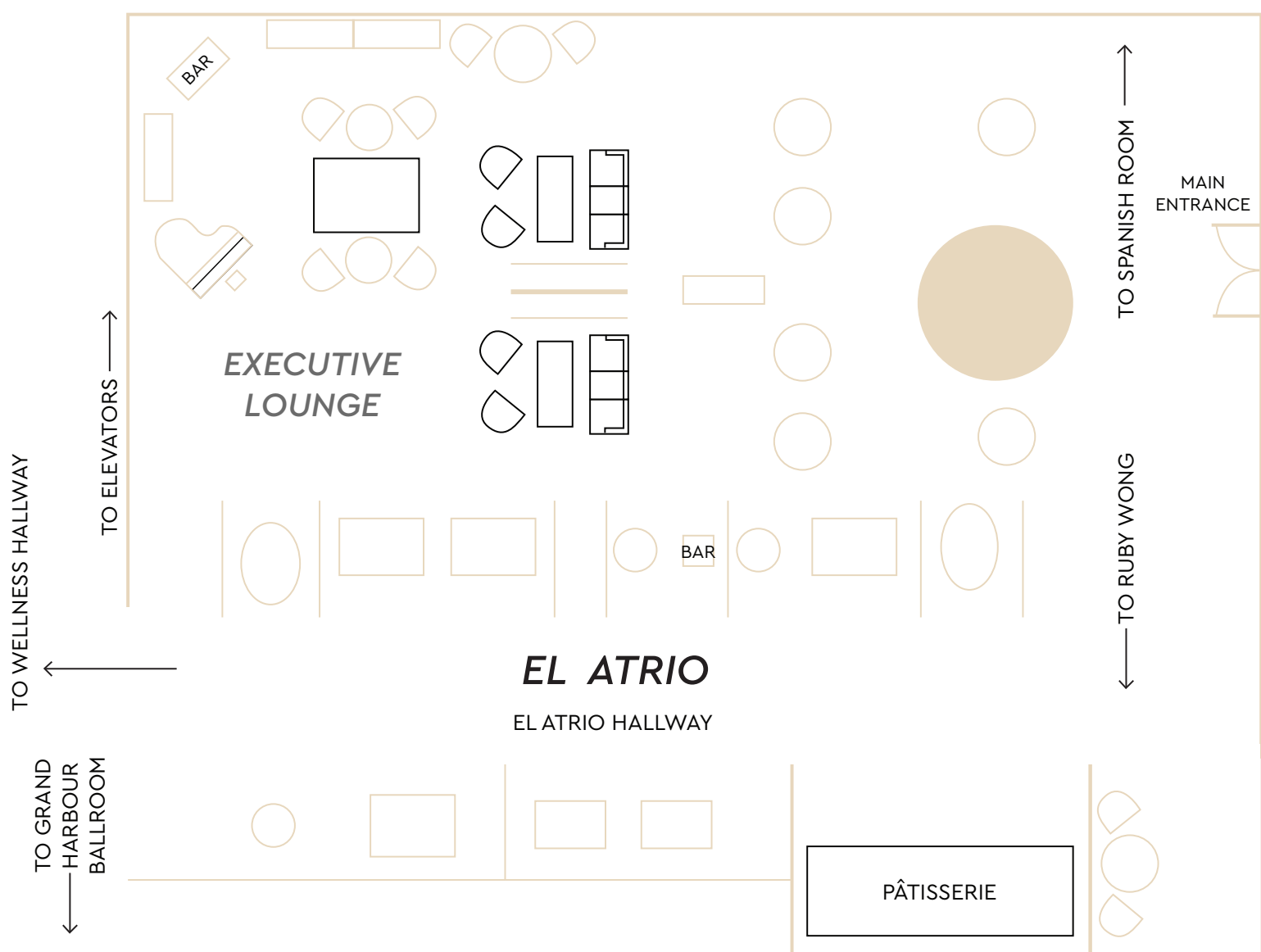




EL ATRIO LOUNGE

Intimate Lounge Gatherings • Group Afternoon Tea
Product Launches • Exhibit Openings and Displays

Indulge in art, history, and comfort at El Atrio Lounge, your go-to spot for food, meetings, and relaxation. Enjoy local comfort food, exclusive coffee blends, and sumptuous patisseries from a local chocolatier. Whether it's gossiping with friends over French afternoon tea or celebrating a business deal with signature cocktails, El Atrio offers a refined ambiance. El Atrio Lounge gives up to 100 pax an elegant space for artful launches and exhibits.

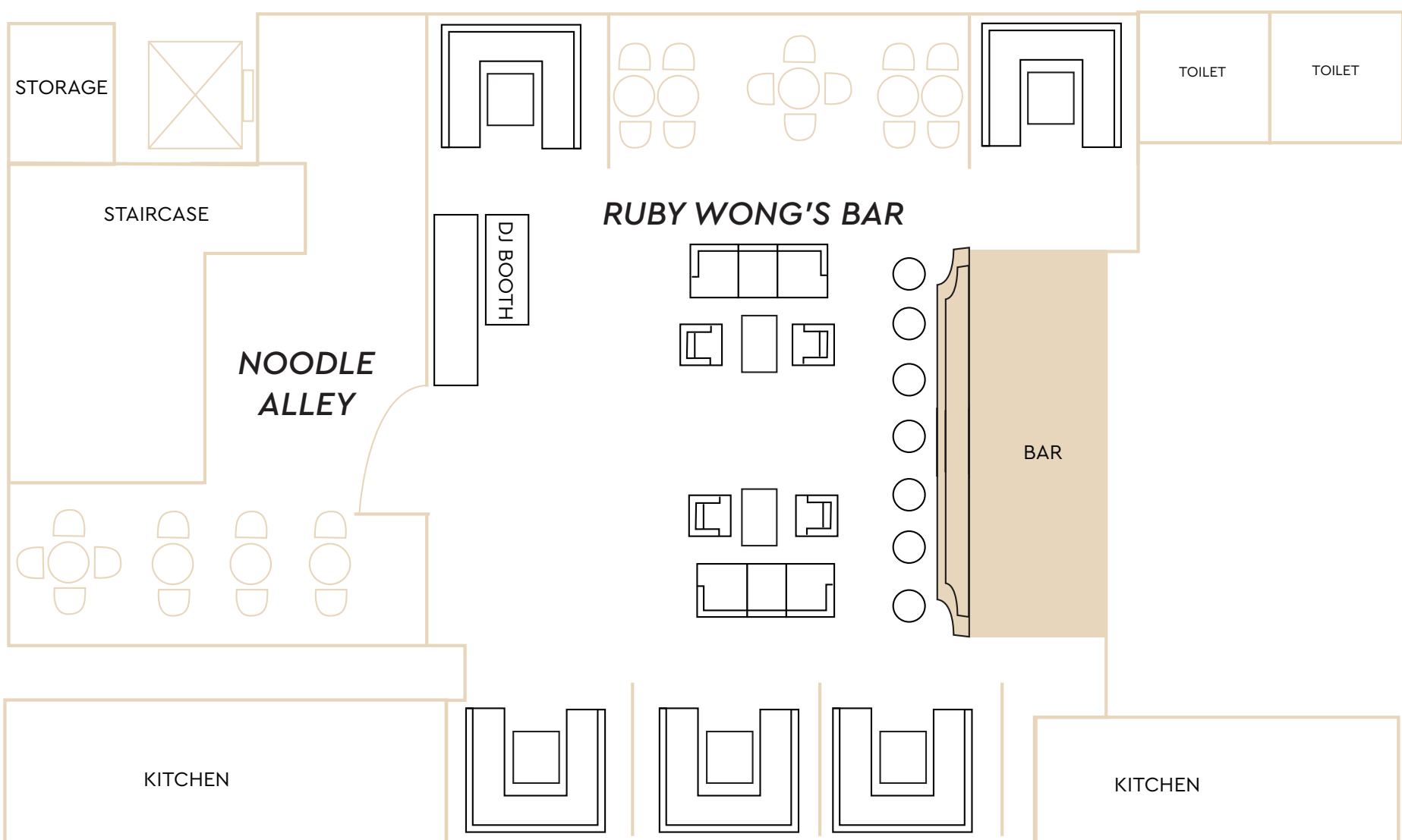




RUBY WONG'S GODOWN

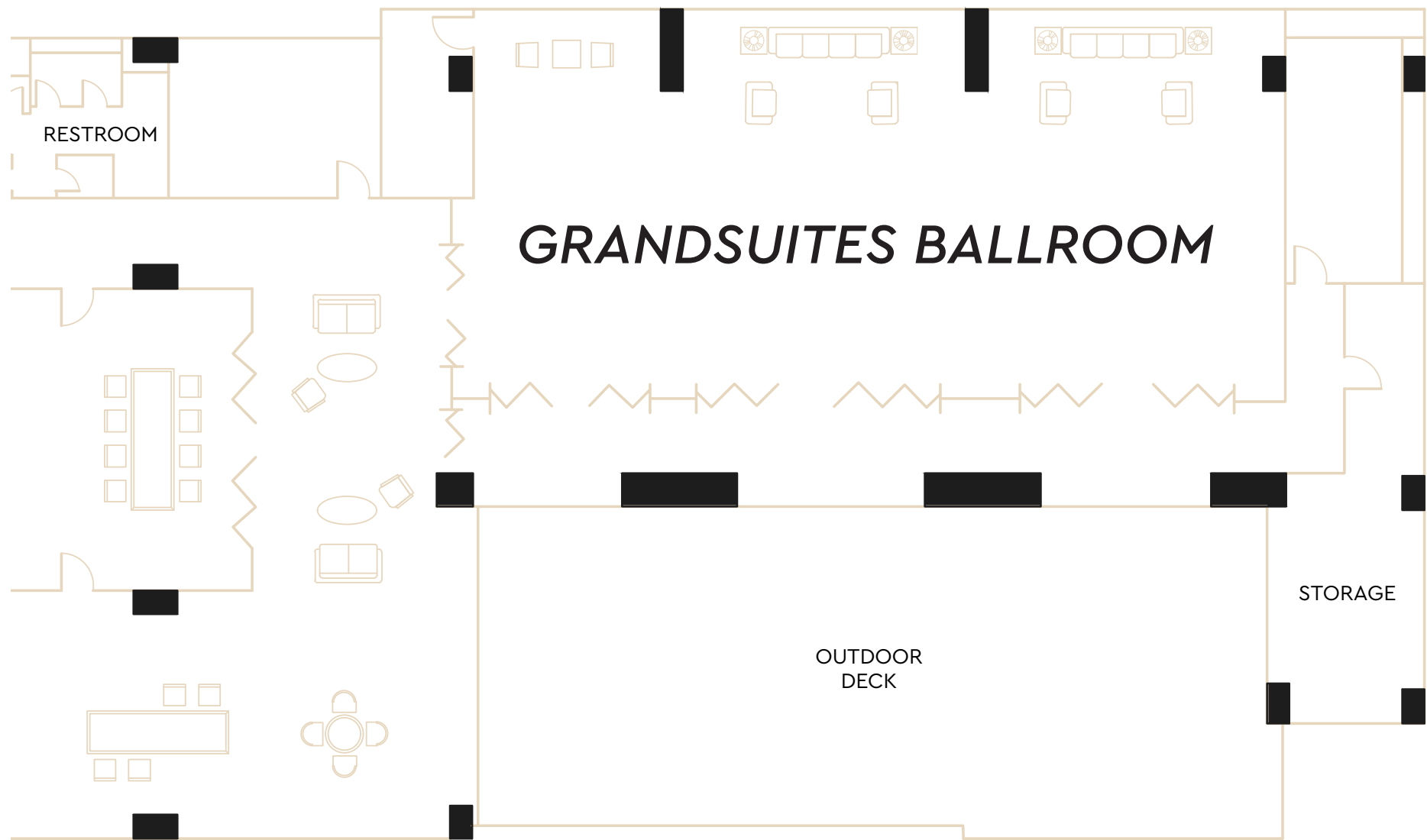
Celebrations • 订婚 (Tinghun) • Photoshoot •
Videoshoot • Product Launches • Parties

Discover Ruby Wong's, a mysterious speakeasy restaurant known for its steaming broths and noodle dishes. Delve into the world of Miss Ruby Wong herself, renowned for collecting stories, recipes, and friends from every culture. Experience an immersive journey in Ruby Wong's Godown, offering interactive entertainment, inventive bar bites, and innovative mixology. Ruby Wong's Godown takes you to a stylish party that can host up to 100 people.



A romantic couple is shown in a close embrace, with the man kissing the woman on the cheek. They are both dressed in formal attire. The background features a decorative, illuminated metal screen with a circular motif. The image is split diagonally; the right side shows a dining table with white linens, gold-rimmed plates, wine glasses, and floral centerpieces, suggesting a high-end restaurant environment.

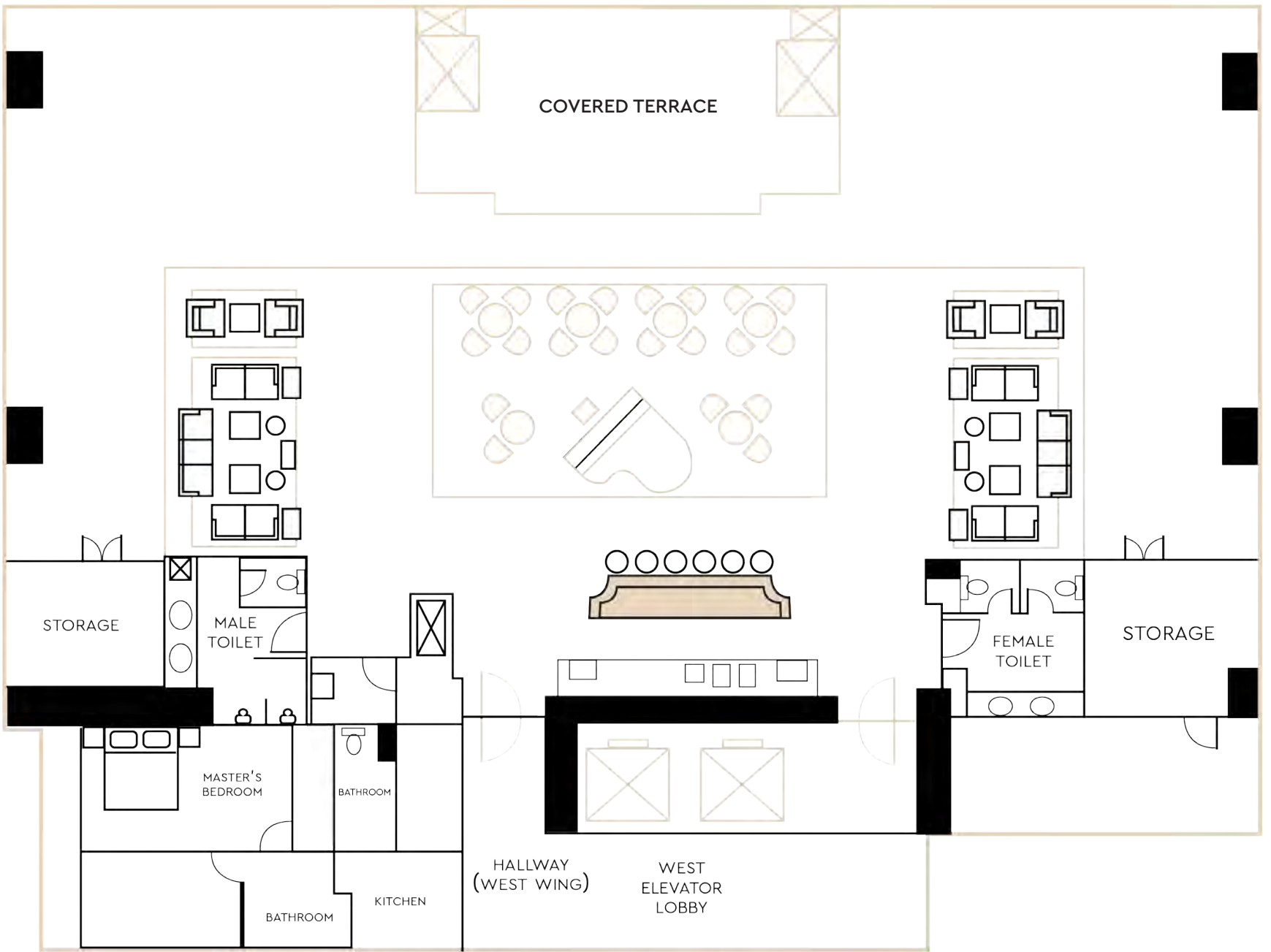
CELEBRATE
in style



GRANDSUITES BALLROOM

FUNCTION ROOM	BALLROOM	BOARDROOM	GARDEN	
SURFACE AREA SQM	222.3564	42.7728	194.616	
DIMENSIONS L (M) X W (M)	21.63 × 10.28	8.04 × 5.32	21.06 × 9.01	
HEIGHT (M)	3.95	4	<i>Speak with your event specialist on how you would like to have this pre-function area arranged</i>	
THEATER	120 pax			
CLASSROOM	75 pax			
U-SHAPE	50 pax			
HALLOW SQUARE	60 pax			
BOARDROOM	60 pax	10 pax		
BANQUET (10 Guests/Table)	120 pax			
COCKTAIL	120 paxwvv			
				60 pax
				100 pax

MANILA BAY VIEW



WEST BAY LOUNGE

FUNCTION ROOM	BOARDROOM	LOUNGE
SURFACE AREA SQM	143.52	154.98
DIMENSIONS L (M) X W (M)	18.4 × 7.8	24.6 × 6.3
HEIGHT (M)	3.5	
LOUNGE SEATING		40 pax
BANQUET (10 Guests/Table)	20 pax	40 pax
COCKTAIL	40 pax	50 pax



STATE-OF-THE-ART AMENITIES

Our sophisticated event venues offer high-speed Wi-Fi Internet access, flexible lighting components, high-resolution projectors, built-in LED TV's and up-to-date audio visual technology.

To make your events more personalized and unique, we offer below delightful features such as:

- Your choice of inspired coffee breaks
- Indulgent after-work offerings
- Specialized and immersive meeting activities
- Decadent buffet or plated dining options
- Cocktails and ceremonies with the majestic views of Manila Bay upon availability



DISTANCE FROM ADMIRAL HOTEL

Ninoy Aquino International Airport

- 7.8 km | 29 mins

Manila Yacht Club

- 600 m | 6 mins

Intramuros

- 3.7 km | 14 mins

Manila Cathedral Church

- 3.7 km | 16 mins

Malate Church

- 700 m | 3 mins

National Museum

- 3.1 km | 10 mins

BSP

- 550 m | 6 mins

PICC/CCP

- 1.7 km | 10 mins

Robinsons Place Manila

- 1.6 km | 7 mins

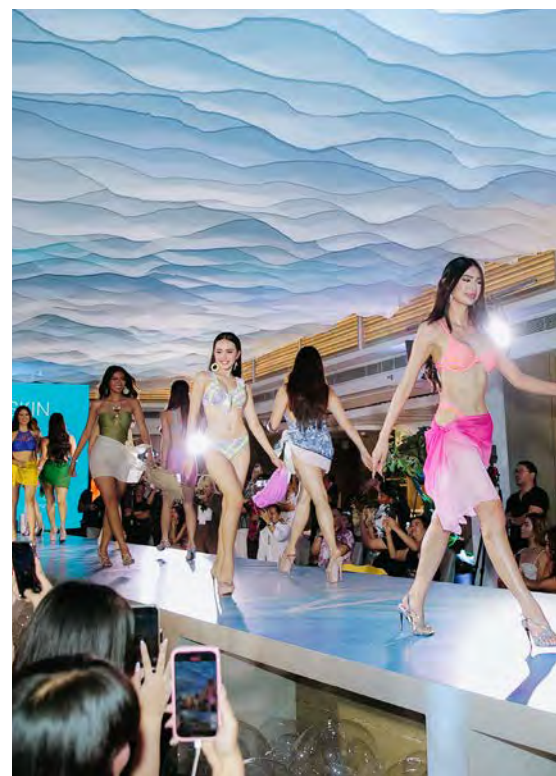
SM Mall of Asia

- 5.1 km | 20 mins

World Trade Center

- 2.6 km | 13 mins

Exceptional Banquets







ADMIRAL HOTEL

Manila

MGALLERY COLLECTION

Let us create your
memorable and meaningful
events *in style!*



ALL MEETING PLANNER

Your next event is more rewarding when
you meet and celebrate with the Admiral.

ADMIRAL HOTEL MANILA – MGALLERY
2138 Roxas Boulevard, Malate, Manila
Email: H9338@accor.com | Phone: 5318-9000
admiralhotelmanila.com | mgallery.com
all.accor.com