



INBALANCE MEETINGS  
AT NOVOTEL



# DESTINATION AND OVERVIEW

**Novotel Newcastle Beach** is situated on the doorstep of one of the best surfbreaks in Australia, Newcastle Beach. The hotel commands the corner of a quaint beachside city block surrounded by renowned Newcastle restaurants, cafes and bars that make it the perfect destination for families, couples and business travellers. Shopping precincts, art galleries and picturesque coastal walks are also only a moment away.

The contemporary hotel rooms are all designed with easy living in mind. Many of the rooms also offer partial views of Australia's east coast and Newcastle's working harbour that make staying at Novotel Newcastle Beach a dream.

The hotel's modern dining restaurant, **Bistro Dalby**, offers a contemporary Australian menu that tempts taste buds with local and seasonal dishes. With a fully equipped bar, indoor and alfresco dining options and a relaxed atmosphere, it is the perfect place to catch up with friends or colleagues.

Novotel Newcastle Beach offers three flexible function rooms all with natural light. The rooms can accommodate large conferences and smaller boutique events and a dedicated events coordinator makes the entire process a seamless experience.

## GETTING HERE



- By Train: Station- 3km
- By Lightrail: Station- 200m
- By Plane: Newcastle Airport- 35km
- By Car: 2 hours drive north of Sydney via the M1 Pacific Motorway

## NOVOTEL NEWCASTLE BEACH

5 King Street  
Newcastle NSW 2300  
AUSTRALIA  
Tel: +61 2 4037 0000  
Fax: +61 2 4032 3799  
Email: [reception@novotelnewcastle.com.au](mailto:reception@novotelnewcastle.com.au)



1

DESTINATION  
AND OVERVIEW

2

PLAN AND  
CONNECT

3

FLOOR  
PLANS &  
CAPACITY

4

TIME  
OUTS & HEALTH  
WELLBEING

5

MENU OPTIONS

6

GUEST ROOMS

INBALANCE MEETINGS  
AT NOVOTEL

**OUR  
INTENT**

A place for people to meet, focus their energy and create moments of impact to achieve great meeting outcomes.



**OUR  
MISSION**

For every guest to leave a Novotel feeling calm, grounded, clear-headed and motivated. In our words they are balanced.

INBALANCE MEETINGS  
AT NOVOTEL



## PLAN AND CONNECT

We understand that clients are often searching for new, unique venues that offer something different from the standard room set up. We know the ideals you could be looking to cultivate: inventiveness, creativity, connection.

Designed to help foster these ideals, InBalance Meetings provides a comfortable, flexible space that can adapt to almost any type of meeting.

All meeting rooms feature floor-to-ceiling windows allowing ample natural light to promote balance with the outside world.



### THE INBALANCE MEETING ROOM FEATURES THE FOLLOWING:

- . White boards and flip charts to capture ideas to support the brainstorming and problem solving process (included in conference package price or can be hired)
- . Fitballs to facilitate a relaxed environment and as props for the timeout sessions (complimentary - on request)
- . Yoga mats available to stretch during your meeting (complimentary - on request)
- . Refreshment Station featuring infused water, apples and mints to ensure delegates stay hydrated and alert (included in conference package price)

1

DESTINATION  
AND OVERVIEW

2

PLAN AND  
CONNECT

3

FLOOR  
PLANS &  
CAPACITY

4

TIME  
OUTS & HEALTH  
WELLBEING

5

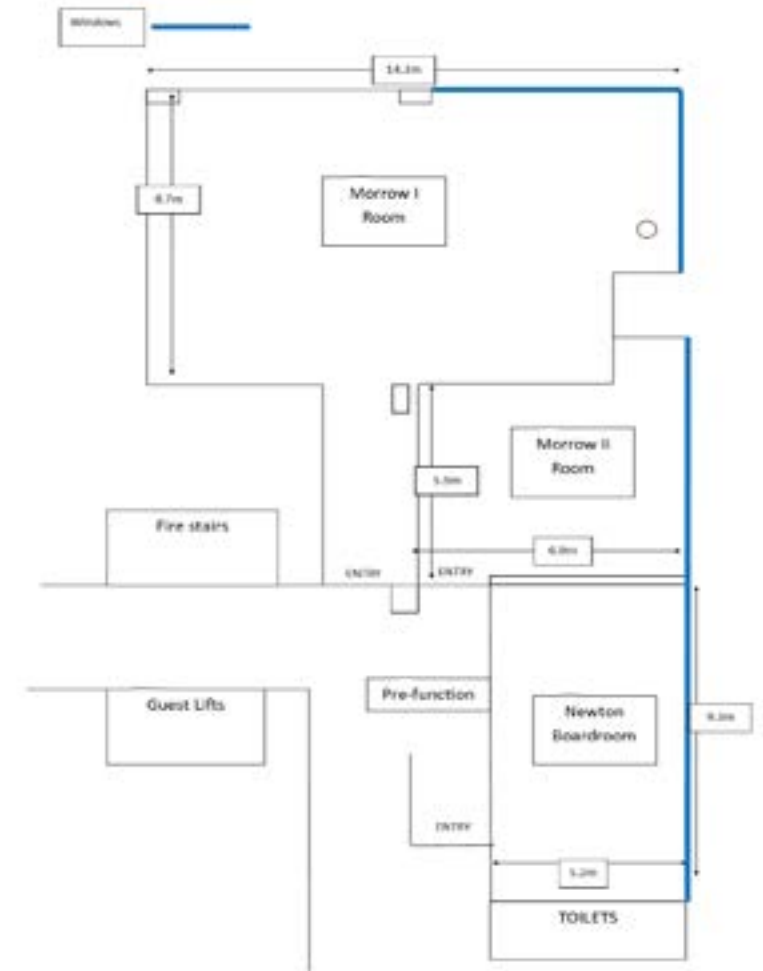
MENU OPTIONS

6

GUEST ROOMS

# FLOOR PLANS & CAPACITIES

Room Name	max Capacity	Height (m)	Area(m <sup>2</sup> )	U-Shape	Classroom	Boardroom	Theatre	Cocktail	Banquet	Cabaret
Morrow I	120	2.8	125	30	54	30	120	100	100	64
Morrow II	30	2.8	41	15	15	14	30	30	30	24
Newton Boardroom	30	2.8	48	21	24	20	30	30	30	24
Morrow	150	2.8	178	NA	75	NA	150	140	140	96
Bistro Dalby Inside	NA	4.5	65	NA	NA	NA	NA	NA	30	NA
Bistro Dalby Outside	NA	NA	121	NA	NA	NA	NA	NA	NA	NA



MORROW I ROOM



MORROW I ROOM



NEWTON BOARDROOM



MORROW II ROOM



## TIME OUT ACTIVITIES

## HEALTH AND WELLBEING

### PEAK PERFORMANCE MEETINGS & EVENTS

Novotel InBalance provides the ideal setting for a high performance health and wellbeing conference experience. Clients can choose to incorporate nutritional content, high energy time out activities and team building experiences to forge a greater connection and collaboration between meeting participants.

#### 1 MEDITAINMENT

The ability to clear the mind to focus on the task ahead is something successful people have known for generations. We can take you there with Meditainment, a 20 minute audio-visual relaxation experience using multi-sensory techniques to clear the mind so you focus on the meeting agenda.

#### 2 YOGA STRETCH WITH MINDFULNESS

Head to toe is a virtual 12 minute yoga stretch, a low impact routine that can be done in business attire.

#### 3 TAKE A WALK

InBalance local area maps give you options for a 20 minute walk or run to revive the senses, relieve stress and get the creative juices flowing again.

NOVOTEL  
COMPLIMENTARY  
CONFERENCE  
PACKAGE  
ACTIVITIES

### ADDITIONAL OPTIONS- PRICED SEPARATELY ACTIVITIES

- **Newcastle Scramble** – Teams explore the Newcastle CBD and city beaches solving clues, collecting scavenger items and capturing team photos aiming to outscore their opponents.
- **Amazing Race** – An action packed 3 hour adventure that takes teams across Newcastle as they compete to complete all the roadblock challenges and arrive to the finish location.
- **Beach Olympics** – Healthy competition with sand between your toes as teams face off in a series of mild team based sporting challenges.

### WORKSHOPS

- **Stretching Guy**- this is a 1.5 hour interactive session designed to be a combination of information and also practical stretching, yoga and meditation practice. Fun and also very informative. Indoors or out.
- **Team Energy Balance**- this session is designed to be an investigation into the energy balance and functionality levels of the team. Investigate the impact of individual behaviours that combine to affect the collective team energy.
- **Nutrition workshop**- learn the basics and the extremes of nutrition in our lives. Session can be shaped to be specific to your team and their needs.

\* Additional charges apply for the above activities

Novotel Wellness Ambassador Sally Fitzgibbons



1

DESTINATION  
AND OVERVIEW

2

PLAN AND  
CONNECT

3

FLOOR  
PLANS &  
CAPACITY

4

TIME  
OUTS & HEALTH  
WELLBEING

5

MENU OPTIONS

6

GUEST ROOMS

## CONFERENCE PACKAGES

### HALF DAY CONFERENCE PACKAGE \$62 PER PERSON, PER DAY

### FULL DAY CONFERENCE PACKAGE \$70 PER PERSON, PER DAY

#### Conference packages include

- . Note pads, pens, iced water on tables
- . Up to 2 timeout activities
- . Morning and afternoon tea (half day package excludes either morning or afternoon tea)
- . Chef's selection gourmet buffet lunch, including tea & coffee, water, OJ\*
- . Refreshment Station with water, mints, bowl of apples
- . Plenary Room Hire (as per timings and minimum numbers below)
- . Whiteboard & flip chart

Full day: 8:00am to 5:00pm

Half day: 8:00am to 12:00pm OR 1:00pm to 5:00pm

#### Minimum numbers for day packages apply:

- . 15 people in Morrow II and Newton Boardroom
- . 30 people in Morrow I Room
- . 50 people in Morrow Room

\*if your group is 15 people or less and the only group in-house a 2 course plated lunch will be available in our restaurant



#### BREAKS

Chef's daily rotation of morning and afternoon tea including 1 item per break from the following menu accompanied by seasonal fruit, with Vittoria pod coffee and a selection of teas

#### Sample break menu items (rotate daily) :

- . Warm mini quiches & spinach & fetta pastries
- . Assorted friands
- . Shaved leg ham & cheddar cheese croissant
- . Blueberry banana bread
- . Homemade lemon drizzle cake
- . Dark chocolate & macadamia brownie
- . Chef's selection of savoury pastry scrolls
- . Assorted cookies

1

DESTINATION  
AND OVERVIEW

2

PLAN AND  
CONNECT

3

FLOOR  
PLANS &  
CAPACITY

4

TIME  
OUTS & HEALTH  
WELLBEING

5

MENU OPTIONS

6

GUEST ROOMS



# CONFERENCE MENUS

## CONFERENCE LUNCHES

Included in day conference package

### BUFFET LUNCH MENUS INCLUDE

- Chef's daily creation sandwiches & wraps
- Chef's selection hot dish
- Chef's selection gourmet salads
- Selection of gourmet cakes & sweets
- Tea & Vittoria coffee station
- Iced water and orange juice

Note: Menus rotate daily.  
Additional cost \$10pp to request a 2 course lunch rather than buffet



## ADDITIONAL OPTIONS

*These items can be added and served at any time of the day to boost energy. Minimum 10 people.*

### CONTINUOUS TEA & COFFEE \$15 PP

Tea and Vittoria coffee station, replenished

### HEALTHY SNACK BREAK \$10 PP

Including popcorn and trail mix

### WAKE UP BALANCED \$15 PP

CHOOSE 3 ITEMS, SERVED ON ARRIVAL

- Fruit juices
- Fresh fruit
- InBalance Bircher muesli
- Deli yoghurt, honey almond crunch pots
- Banana bread

### TEA BREAK PICK ME UPS \$6 PP EA

CHOOSE 1 ITEM PER BREAK

- Grilled breads with dips
- Rocky road slice
- InBalance brownie
- Fresh baked cookies
- Mini ice-cream
- Iced tea

### DOUGHNUT PLATTER \$6 PP

### AUSTRALIAN CHEESE PLATTER \$10 PP

1

DESTINATION AND OVERVIEW

2

PLAN AND CONNECT

3

FLOOR PLANS & CAPACITY

4

TIME OUTS & HEALTH WELLBEING

5

MENU OPTIONS

6

GUEST ROOMS

# PRIVATE BREAKFAST MENUS

Minimum 10 guests

## LIGHT WORKING BUFFET BREAKFAST - \$30 PP

Minimum 10 guests

- . Seasonal fresh fruit salad
- . Yoghurt with berries and almond crunch
- . Bircher muesli cups
- . Banana bread, mini muffins, croissants and Danishes
- . Mushroom, tomato and cheese frittata
- . Selection of chilled fruit juices
- . Tea and Vittoria coffee station



## PLATED BREAKFAST - \$40 PP

Minimum 20 guests

### *Served to centre of table*

- . Seasonal fresh fruit salad
- . Yoghurt with berries and almond crunch
- . Banana bread, mini muffins, croissants and Danishes

### *Hot plated dish served individually*

- . Scrambled eggs with toasted sourdough, streaky bacon and grilled tomato

Selection of chilled fruit juices

Tea and Vittoria coffee station

*Please ask us if you would like to see further options for the plated dish*

1

DESTINATION  
AND OVERVIEW

2

PLAN AND  
CONNECT

3

FLOOR  
PLANS &  
CAPACITY

4

TIME  
OUTS & HEALTH  
WELLBEING

5

MENU OPTIONS

6

GUEST ROOMS

# PRIVATE PLATED MENUS

Minimum 20 guests

**3 COURSE ALTERNATE SERVE - \$75 PER PERSON**

**2 COURSE ALTERNATE SERVE - \$65 PER PERSON**

Minimum 20 guests

Menus are served with bread rolls & tea & Vittoria coffee station

Please choose 2 items per course, served alternately

## Entree Options

Seared king prawns, pico de gallo, avocado tian, lemon oil

Wood smoked chicken, witlof, black grape & walnut salad, verjuice dressing

Apple cider braised pork ravioli, sea salt crackling & chunky tomato sauce

Charred lamb fillet, sweet potato puree, blistered cherry tomato, rosemary jus

Five spice duck breast, warm green bean & asparagus salad, shaved almonds

Roasted pumpkin & ginger soup, crème fraiche sunflower granola (v)

## Main Options

Pan seared chicken supreme, roasted sweet potato, broccolini, red wine jus

Char grilled lamb rump, crushed herb potato, dutch carrots, salsa rossa

Kumara & parmesan ravioli, radicchio, sage burnt butter (v)

Barramundi fillet, roast fennel, cavolo nero, saffron beurre blanc

Char grilled beef sirloin, potato galette, green bean, mushroom ragout

Grilled pork cutlet, apple & red cabbage compote, sautéed kiplers, calvados reduction

## Dessert Options

Sticky date pudding, butterscotch sauce, vanilla cream

Frangipane tart, raspberry coulis, double cream

Vanilla bean panna cotta, mixed berry compote, almond praline

Dark chocolate tart, candied orange and farmhouse cream

Individual pavlova, strawberries & passionfruit salad

Warm chocolate macadamia brownie, salted caramel sauce, double cream

1

DESTINATION  
AND OVERVIEW

2

PLAN AND  
CONNECT

3

FLOOR  
PLANS &  
CAPACITY

4

TIME  
OUTS & HEALTH  
WELLBEING

5

MENU OPTIONS

6

GUEST ROOMS

# BUFFET MENU

Minimum 20 guests

## BUFFET MENU

\$70 PER PERSON

Minimum 20 guests

### Hot Selection

- . Horseradish and herb crusted rare beef sirloin, red wine jus
- . Pan seared Atlantic salmon, tomato ratatouille
- . Lemon and thyme roasted corn fed chicken, aged balsamic roasted root vegetables

### Sides

- . Parmesan and sage dauphinoise potatoes
- . Steamed sweet corn, sea salt flakes
- . Green beans with toasted almonds

### Salads

- . Fresh garden salad red wine vinaigrette
- . Green bean, chickpea, cherry tomato and almonds
- . Roasted sweet potato, pinenut and parmesan
- . Rocket, pear and walnut salad

### Desserts

- . Seasonal fruit platter
- . Individual Pavlova, mixed berry compote and vanilla cream
- . Assorted petit cakes
- . Cheese platter served with quince paste, dried fruit, crackers

Menu is served with bread rolls and includes tea & coffee station



# CANAPÉ PACKAGES

Minimum 20 guests

## 30 MINUTES CANAPES

**\$25 PER PERSON**

Selection of 2 hot and 2 cold canapes served for 30 minutes

## 1 HOUR CANAPES

**\$35 PER PERSON**

Selection of 2 hot and 2 cold canapes served for 1 hour

## SUBSTANTIAL CANAPE PACKAGE 1

**\$55 PER PERSON**

Selection of 3 hot and 3 cold canapes served for 2 hours, 1 substantial and 1 dessert canapes

## SUBSTANTIAL CANAPE PACKAGE 2

**\$75 PER PERSON**

Selection of 3 hot and 3 cold canapes served for 2 hours, 2 substantial and 2 dessert canapes

## Cold Canapés

- . Smoked salmon and cream cheese with rye crumble
- . Prawn ceviche with lime, avocado and crisp tortilla
- . Sundried tomato and goat cheese tartlet (v)
- . BBQ peking duck and Asian herb salad
- . Vine ripened tomato and olive bruschetta (v)
- . Smoked chicken, grape and walnut salad (gf)
- . Mini pork belly with pineapple chilli salsa (gf)
- . Thai rice paper rolls with sweet chilli (v, gf)
- . Selection of house made sushi pickled ginger and soy (v, gf)

## Hot Canapés

- . Lamb and rosemary koftas with cucumber raita (gf)
- . Satay chicken skewers with peanut dipping sauce
- . Mini vegetable spring rolls (v)
- . Seared Canadian scallops with roast capsicum salsa (gf)
- . Spinach, zucchini and feta roll (v)
- . Panko crusted king prawns with lemon aioli
- . Selection of mini gourmet pies
- . Braised beef cheek and caramelised onion tart
- . Roast pumpkin, leek and feta tartlet (v)
- . Wild mushroom and brie arancini pesto aioli (v, gf)

## Dessert Canapés

- . Mini vanilla brulees (gf)
- . Strawberries and cream with Belgium chocolate
- . Mini apple crumble
- . Washed rind, toasted sour dough, baked pear
- . Portuguese tarts
- . Seasonal fruit flan
- . Petit pecan pie
- . Chocolate fudge cake
- . Passion fruit cheese cake

## Substantial Canapés

- . Pulled pork slider with red cabbage and apple compote
- . Wagyu beef cheek slider with caramelised onion, tomato and rocket
- . Seafood fritto misto fried whiting, squid, prawn with lemon aioli
- . Wild mushroom risotto, white truffle oil and grana padano (v, gf)
- . Smokey chorizo, chicken and prawn paella (gf)
- . Chicken Mie Goreng Indonesian stir fried noodle boat
- . Salad of duck confit marinated feta, pear and caramelised walnuts
- . BBQ pork belly tortillas with avocado and Mexican salsa

## ADDITIONAL ITEMS

**\$4.00 PER PERSON**

Additional hot, cold or dessert canapé

**\$8.00 PER PERSON**

Substantial canapé



1

DESTINATION  
AND OVERVIEW

2

PLAN AND  
CONNECT

3

FLOOR  
PLANS &  
CAPACITY

4

TIME  
OUTS & HEALTH  
WELLBEING

5

MENU OPTIONS

6

GUEST ROOMS

# BEVERAGE PACKAGES

Minimum 20 guests



## SILVER PACKAGE

1 hour	\$28 per person
2 hours	\$36 per person
3 hours	\$42 per person
4 hours	\$48 per person
5 hours	\$52 per person

Bancroft Bridge NV Sparkling Brut

Bancroft Bridge Semillon Sauvignon Blanc

Bancroft Bridge Shiraz Cabernet

Sydney Brewery Lager

Sydney Brewery Pale Ale

James Boags Premium Light

Soft drinks, orange juice and iced water

## GOLD PACKAGE

1 hour	\$32 per person
2 hours	\$38 per person
3 hours	\$44 per person
4 hours	\$52 per person
5 hours	\$56 per person

Tyrrells Moores Creek Sparkling Brut

Tyrrells Moores Creek Semillon Sauvignon Blanc  
OR Tyrrells Moores Creek Chardonnay

Tyrrells Moores Creek Shiraz  
OR First Creek Botanica Pinot Noir

Sydney Brewery Lager  
Sydney Brewery Pale Ale  
James Boags Premium Lager  
James Boags Premium Light

Soft drinks, orange juice and iced water

## PLATINUM PACKAGE

1 hour	\$36 per person
2 hours	\$42 per person
3 hours	\$50 per person
4 hours	\$56 per person
5 hours	\$60 per person

Bandini Prosecco

3 Tales Sauvignon Blanc  
OR Tyrrells Semillon

Tyrrells Shiraz  
OR Pepper Tree Cool Climate Merlot

Sydney Brewery Lager  
Sydney Brewery Pale Ale  
Little Creatures Pale Ale  
Sydney Brewery Cider  
James Boags Premium Light

Soft drinks, orange juice and iced water

## ADDITIONAL OPTIONS

Basic Spirits  
With mixer \$10 per serve

Smirnoff Vodka  
Johnnie Walker Red  
Gordons Gin  
Jim Beam  
Bundaberg UP rum  
Southern Comfort  
Bacardi  
Jose Cuervo Especial Tequila

Premium Spirits  
With mixer \$12 per serve

Absolut Vodka  
Canadian Club  
42 Below Vodka  
Johnnie Walker Black  
Bombay Sapphire Gin  
Jameson Irish Whiskey

1

DESTINATION AND OVERVIEW

2

PLAN AND CONNECT

3

FLOOR PLANS & CAPACITY

4

TIME OUTS & HEALTH WELLBEING

5

MENU OPTIONS

6

GUEST ROOMS



## SPARKLING WINE

Emeri Pink Moscato \$45 bottle | \$10 glass  
Bancroft Bridge Sparkling Brut \$45 bottle | \$10 glass  
Bandini Prosecco \$55 bottle

## CHAMPAGNE

NV Moët & Chandon Imperial \$100 bottle  
NV Veuve Clicquot Yellow Label Brut \$140 bottle

## WHITE WINE & ROSE

Bancroft Bridge Semillon Sauvignon Blanc \$45 bottle | \$10 glass  
De Bortoli Family Selection Rose \$45 bottle | \$10 glass  
Tyrrells Semillon \$55 bottle | \$12 glass  
Pete's Pure Sauvignon Blanc \$50 bottle | \$11 glass  
3 Tales Sauvignon Blanc \$55 bottle  
Bancroft Bridge Chardonnay \$45 bottle | \$10 glass  
Tyrrells Chardonnay \$55 bottle | \$12 glass  
Pepper Tree Verdelho \$55 bottle | \$12 glass  
Ant Moore Spinning Top Pinot Gris \$50 bottle | \$11 glass

## RED WINE

Bancroft Bridge Shiraz Cabernet \$45 bottle | \$10 glass  
First Creek Botanica Pinot Noir \$55 bottle | \$12 glass  
Tyrrells Shiraz \$55 bottle | \$12 glass  
Rockbare 'RB1' Shiraz \$60 bottle  
Rymill The Dark Horse Cabernet Sauvignon \$55 bottle  
Gemtree Grenache Shiraz Mataro \$55 bottle | \$12 glass  
Tar & Roses Tempranillo \$50 bottle | \$11 glass  
Bremerton Malbec \$50 bottle | \$11 glass  
Pepper Tree Cool Climate Merlot \$55 bottle | \$12 glass

## BOTTLED BEER

### LIGHT BEER

James Boags Premium Light \$9  
Hahn 3.5 \$9  
Great Northern Zero \$9

### CLASSIC BEERS

Tooheys New \$10  
XXXX Gold \$10  
Hahn Superdry \$10  
Tooheys Extra Dry \$10  
James Boags Premium \$10

### CRAFT BEERS

Sydney Brewery Lager \$9  
Sydney Brewery Pale Ale \$9  
Sydney Brewery Pilsner \$9  
Sydney Brewery IPA \$9  
James Squire Pale Ale \$10  
Little Creatures Pale Ale \$10  
White Rabbit Dark Lager \$10

### CIDER

Sydney Brewery Apple Cider \$9  
Sydney Brewery Agave Ginger Cider \$9

## NON-ALCOHOLIC

### SOFT DRINKS

\$6 per glass  
\$15 per jug

Coke  
Coke No Sugar  
Sprite  
Lift  
Sparkling mineral water

### JUICE

\$6 per glass  
\$15 per jug

Orange  
Apple  
Pineapple

# BEVERAGES



1 DESTINATION AND OVERVIEW

2 PLAN AND CONNECT

3 FLOOR PLANS & CAPACITY

4 TIME OUTS & HEALTH WELLBEING

5 MENU OPTIONS

6 GUEST ROOMS

# GUEST ROOMS



## ACCOMMODATION

The hotel's 88 contemporary guest rooms are all designed with spaciousness and easy living in mind. Many of the rooms also offer views of Australia's east coast and Newcastle Harbour that make staying at Novotel Newcastle Beach a dream.

### Room Facilities

- Spacious, generously proportioned guestrooms
- Individually controlled air-conditioning
- Cable TV
- Movies on demand
- Alarm/Clock radio
- High-speed broadband internet
- Writing desk
- Tea and coffee making facilities
- Mini bar
- Iron and ironing board
- Hairdryer
- In-room safe

### Room Categories

- Standard Room
- Superior Room
- Superior Harbour View Room
- Family Room with Dining Table
- Family Room with Bath

### Guest Services

- Concierge
- Laundry and dry cleaning service
- 24-hour reception

### Food and Beverage

- Bistro Dalby, indoor and outdoor dining
- Lobby bar
- 24-hour in-room dining
- In-Balance healthy choice menu items

### Leisure Facilities

- Gymnasium
- Spa
- Steam room

1

DESTINATION AND OVERVIEW

2

PLAN AND CONNECT

3

FLOOR PLANS & CAPACITY

4

TIME OUTS & HEALTH WELLBEING

5

MENU OPTIONS

6

GUEST ROOMS





**NOVOTEL**

HOTELS & RESORTS

NEWCASTLE BEACH



An **ACCORHOTELS** brand