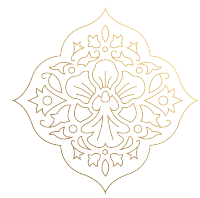
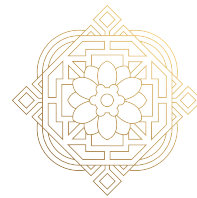


GRAND MERCURE

BANGKOK ATRIUM





THE HOTEL

Discover the perfect mix of Thai warmth and modern comfort at Grand Mercure Bangkok Atrium. This 5-star hotel sits in Bangkok's heart. It's on Phetchaburi Road, making airport and business district trips easy. Plus, you're close to Sukhumvit attractions with MRT, ARL, and BTS Skytrain connections. Our 23-floor hotel offers stunning skyline views. We've crafted every part of your stay to amaze – from plush rooms and suites to the four top-notch dining spots.

ROOMS & SUITE

Abundant natural light streaming in through windows that stretch right across the room. Decor that marries modern chic with touches of Thai heritage. Warm wood furnishings, generously sized bathrooms (most with a separate tub and rain shower), and a deeply cushioned bed made for a flawless night's sleep. Whether you choose a thoughtfully appointed room or a suite with a spacious living area, welcome to the new standard for Bangkok accommodation. For the ultimate Bangkok luxury experience, upgrade to include access to our executive lounge, where complimentary breakfast, a selection of refreshments and cocktail hour are served against a backdrop of dramatic skyline views.



THE DETAILS OF THE BED TYPES FOR EACH

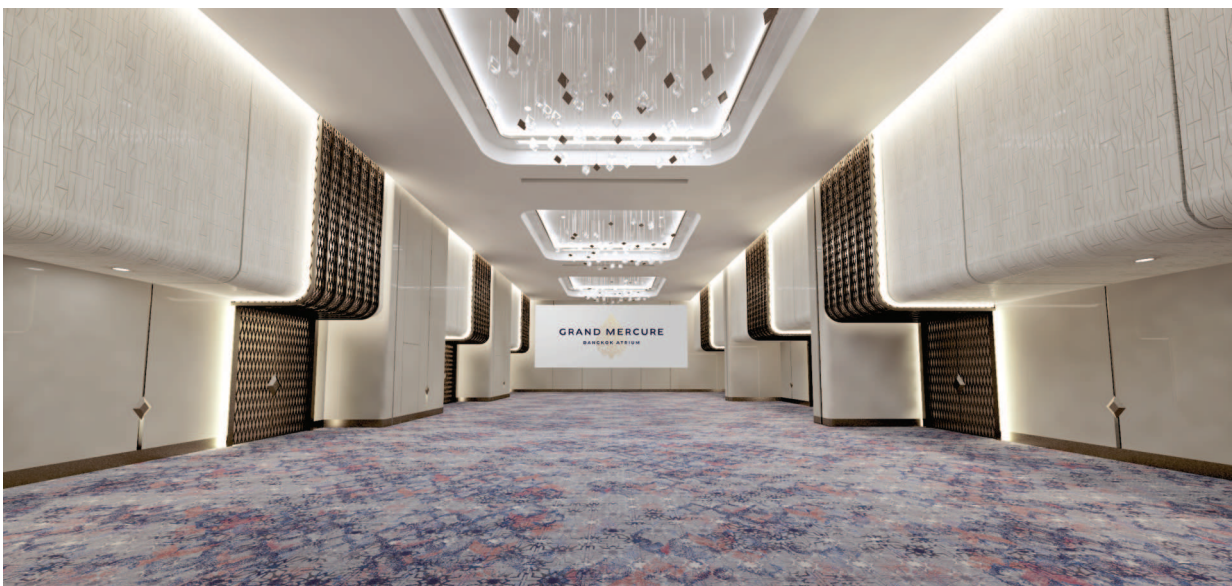
ROOM TYPE	SQ.M.	NUMBER OF ROOM	KING	TWIN
Superior Room	30	261	108	153
Skyline Room	30	46	46	
Deluxe Room	30	174	108	66
Corner Room	30	32	32	
Executive Room	30	21	21	
Corner Suite	40	24	16	8
Executive Suite	89	6	6	
Grand Executive Suite	129	4	4	
Total		568	341	227

BUSARAKAM BALLROOM

Busarakam Ballroom spans over 300 sq.m. with an additional pre - function area of the same size, and its soaring seven - metre ceilings are adorned with chandeliers that illuminate the meticulously arranged banqueting tables or theatre - style seating. Capable of accommodating up to 304 guests in various setups, the ballroom is the perfect choice for any prestigious event. A dedicated team of experienced planners and state - of - the - art audiovisual technology, including a large stage, impeccable sound, and customizable light shows, guarantee the flawless realization of any event vision.

KEY HIGHLIGHT

- Wall Type LED in Busarakam Ballroom
- Build in LCD Projector with Screen
- State-of-the-Art Technology
- 7-meter High Ceiling
- Teleconferences Equipment
- High Speed WiFi Internet
- Natural Daylight in the Pre Function Area
- Digital Signage



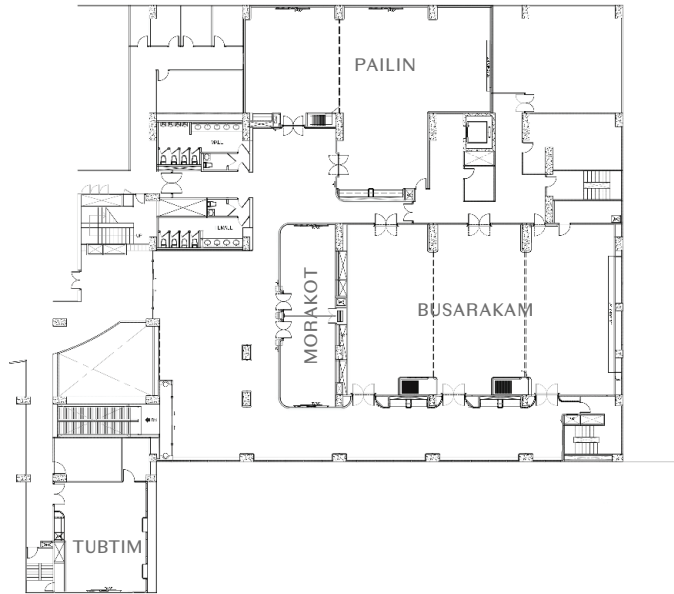
CONFERENCE CAPACITIES

Meeting Rooms	Width	Length	Sq.m.	Ceiling Height	Seating Options					
					Theatre	Classroom	U-shape	Boardroom	Banquet	Cocktail
2nd Floor										
Busarakam Ballroom	13.5	22.72	307	7	304	180	66	78	200	300
Busarakam 1	13.5	7.07	95	7	96	54	33	42	60	100
Busarakam 2	13.5	8.15	110	7	112	54	33	42	60	100
Busarakam 3	13.5	7.5	101	7	96	54	33	42	60	100
Pailin	16	20.5	328	2.85	220	100	70	60	140	220
Pailin 1	10	12.5	165	2.85	150	70	50	45	100	170
Pailin 2	9.29	7.87	73	2.85	70	30	20	15	40	50
Tubtim	9.6	7.1	68	2.85	50	30	20	20	30	40
Morakot	5.1	16.42	84	2.85	70	33	40	30	40	60
Morakot 1	5.1	7	36	2.85	30	15	20	15	20	30
Morakot 2	5.1	9.42	48	2.85	40	18	20	15	20	30
4th Floor										
Vivaldi	7.33	17.79	130		120	60	35	40	80	200
1st Floor										
Peitai	6.75	8.60	58	2.45	40	18	18	18	30	30
Opal	6.75	4.20	28	2.45	16	12	10	10	20	20
Outdoor										
Poolside	NA	NA	450	NA	NA	NA	NA	NA	110	150
Helipad	NA	NA	NA	NA	NA	NA	NA	NA	NA	40
Rooftop Terrace	NA	NA	350	NA	NA	NA	NA	NA	150	180
Rooftop Terrace 1			210						60	80
Rooftop Terrace 2			140						60	80
Total Space			1,803							

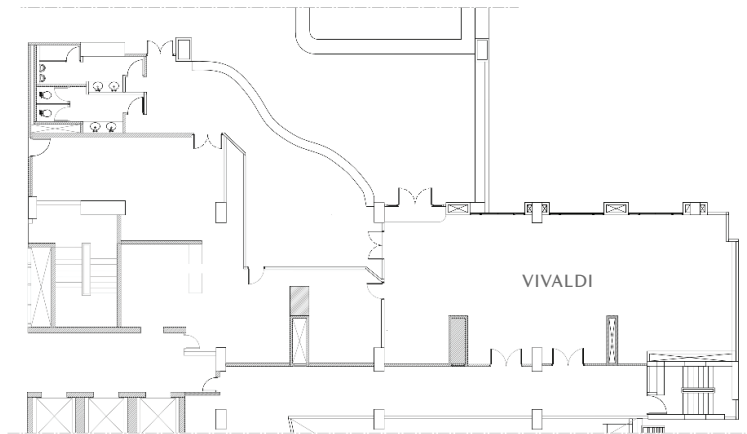


FLOOR PLAN

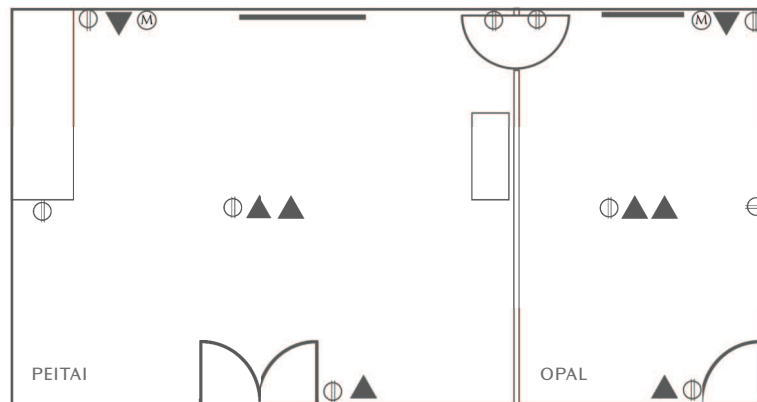
2F FLOOR PLAN



4F FLOOR PLAN



1F FLOOR PLAN





PUBLIC

Public offers the city's finest breakfast buffet, blending Thai, Asian and Western flavors with artisanal drinks, teas and fresh juices. Enjoy a lively atmosphere, interactive chef stations and a diverse à la carte menu perfect for social gatherings.

OPENING HOUR

Open Daily: 6 AM – 10.30 PM

Breakfast: 6 AM – 10.30 AM

Lunch: 12 PM – 2 PM

Dinner: 6 PM – 10.30 PM



THE LOBBY BAR

Welcome to The Lobby Bar an urban chic venue perfect for brunch or casual meetings. Enjoy our Western - inspired menu featuring salads, calamari, bruschetta and specialty burgers or unwind with premium coffees and fresh juices. A stylish spot for a refreshing break during your city exploration.

OPEN DAILY: 6.30 AM – 12 AM



POOL BAR

Discover the Pool Bar on our Bangkok rooftop for stunning views and unique cocktails. Enjoy a retro chic atmosphere next to our open-air pool with signature snacks like som tam polamai and Thai rice crackers. A refreshing urban escape awaits.

OPEN DAILY: 10 AM – 10 PM



BENIHANA

Step into Benihana our iconic Japanese Steakhouse for a Tokyo - inspired experience in Bangkok, where chefs masterfully prepare Teppanyaki favorites like Wagyu and lobster at your table. Enjoy a diverse menu from bento boxes to noodles, paired with imported sakes and wines in a setting adorned with authentic Japanese art.

OPEN DAILY: 12 PM – 10 PM

FITNESS CENTER

In the same way that Thai culture embraces the concept of holistic wellbeing, we believe that fitness is another of the keys to inner equilibrium – which is why our fourth-floor gym stays open around the clock and is complimentary for all hotel guests. Filled with natural light and complemented by motivating urban panoramas, it features the latest cardio and strength - training equipment, an aerobics studio and personal trainers to help you achieve your fitness goals.

OPENING HOUR – 24 Hours



EXECUTIVE LOUNGE

Experience exclusive privileges at our Executive Lounge on the 23rd floor, where panoramic views enhance your stay. Benefits include personalized services, complimentary breakfast, evening cocktails, all - day refreshments, free laundering for three items, dining discounts at Benihana, and much more.

OPENING HOUR

Open Daily: 6 AM – 7 PM

Breakfast: 6 AM – 11 AM

Cocktail Hour: 5.30 PM – 7 PM

FREE SHUTTLE SERVICE

Petchburi MRT Station
(Drop off only at Singha Complex Building)

8 : AM	9 : AM	11 : AM	1 : PM
--------	--------	---------	--------

Shopping Mall
(Drop off only)

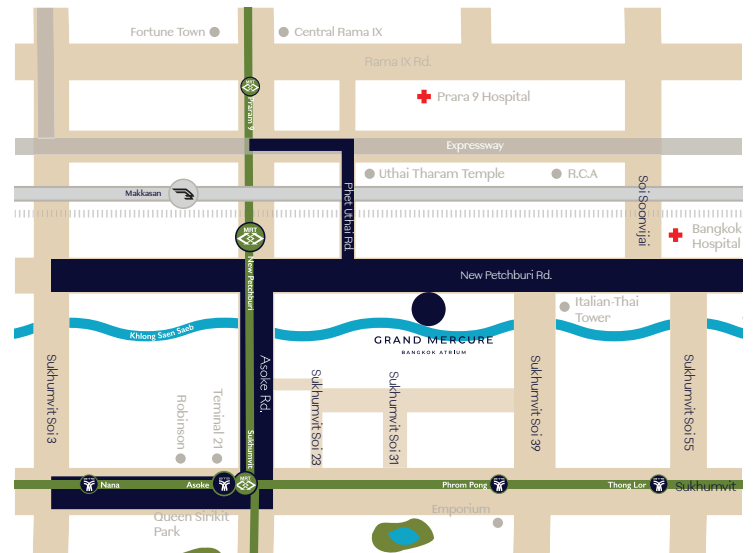
11 : AM	1 : PM	3 : PM
---------	--------	--------

Central World and
Paladium Mall

Terminal 21

Central Rama 9

Contact the Concierge desk or dialing "15"
to reserve your seat in advance first come first serve.



Grand Mercure Bangkok Atrium

1880 New Petchburi Road, Bangkok Huay Kwang, Bangkok 10310 | HC0Y8-SM@accor.com | Tel. 0 2718 2000

GrandMercureBangkokAtrium GrandMercureBangkokAtrium @grandmercureatrium

Explore More
Please Scan Here

