

MERCURE MEETINGS

MEETINGS & EVENTS KIT

MERCURE
HOTEL

MERCURE HOTEL

WELCOME TO MERCURE MELBOURNE SOUTHBANK

Mercure Melbourne Southbank is located just 600m from Southbank Promenade on the Yarra River, a 10 minute walk to the popular Bourke Street Mall, and only 350m from Flinders Street Station.

Be our guest in one of the 275 newly refreshed accommodation rooms, thoughtfully designed with smart TV's, individual climate control air conditioning, a work desk, a mini-fridge, tea and coffee making facilities, and comfortable beds for a good night's sleep.

The hotel boasts a 24-hour reception desk as well as express check-in and check-out kiosks. Our team can offer friendly advice about the local area, to help you make the most of your time in this beautiful city.

Guests can also enjoy modern, locally and ethically sourced Australian dishes and beverages from the newly launched cafe, restaurant and bar, Distrikt.



MERCURE MEETINGS

INTRODUCTION **CARBON NEUTRAL MEETINGS** MINDSPACES MEETING FACILITIES HOTEL FACILITIES FLOOR PLANS CAPACITY CHART DAY PACKAGES

AUDIO VISUAL & STAGING SERVICES MEETING PLANNER CONTACTS

CARBON NEUTRAL MEETINGS

MINDFUL MEETINGS BY MERCURE HOTELS ARE
CARBON NEUTRAL WITH A COMMITMENT TO MAKING
THE WORLD A BETTER PLACE.
TO FIND OUT MORE VISIT WWW.MERCURE.COM

- Your Mindful Meeting will be carbon neutral
- Greenhouse gases produced during the meeting are offset by funding renewable energy sources through the Carbon Reduction Institute
- We fund the cost of the offsets and do not pass them on to you
- Our hotel follows Accor's global environmental charter with priority actions identified to reduce energy and water consumption and improve waste management and recycling



MINDSPACES



MERCURE MINDFUL MEETING ROOMS INCLUDE:

- Room arrangements designed to facilitate collaboration and connection
- Access to natural light and fresh air where possible, with multiple and versatile spaces throughout the hotel
- Reusable water jugs, to minimise the use of single-use plastic and unnecessary packaging



MEETING FACILITIES

Mercure Melbourne Southbank offers meeting planners a great location along with attractive competitive pricing.

Inclusions / Features includes:

- Meeting rooms located on the ground floor for easy wheelchair accessibility
- Room hire
- Dedicated event coordinator
- Air conditioning
- Complimentary Wi-Fi
- Audio and video aids including microphone, data projector and screen, lectern and TV
- Whiteboard and flipchart
- Pads, pens, mints and still & sparkling water
- Flexible and tailored food and beverage options for pre, during and post meeting requirements
- Barista made coffee (Nespresso available if preferred)



MERCURE MEETINGS

INTRODUCTION CARBON NEUTRAL MEETINGS MINDSPACES MEETING FACILITIES **HOTEL FACILITIES** FLOOR PLAN CAPACITY CHART MEETING PACKAGES

HOTEL FACILITIES



In addition to a convenient location and modern guest rooms, Mercure Melbourne Southbank offers a range of thoughtful amenities, designed to make your stay as comfortable as possible.

Facilities includes:

- Distrikt Press cafe and Bar Distrikt restaurant and bar
- Complimentary WiFi
- Air conditioning in all rooms
- Spacious accommodation rooms with ensuite bathrooms
- 24-hour front desk with express check-in and check-out kiosks
- Daily housekeeping
- Off site parking (external car park)
- In-room dining
- Digital hotel compendium

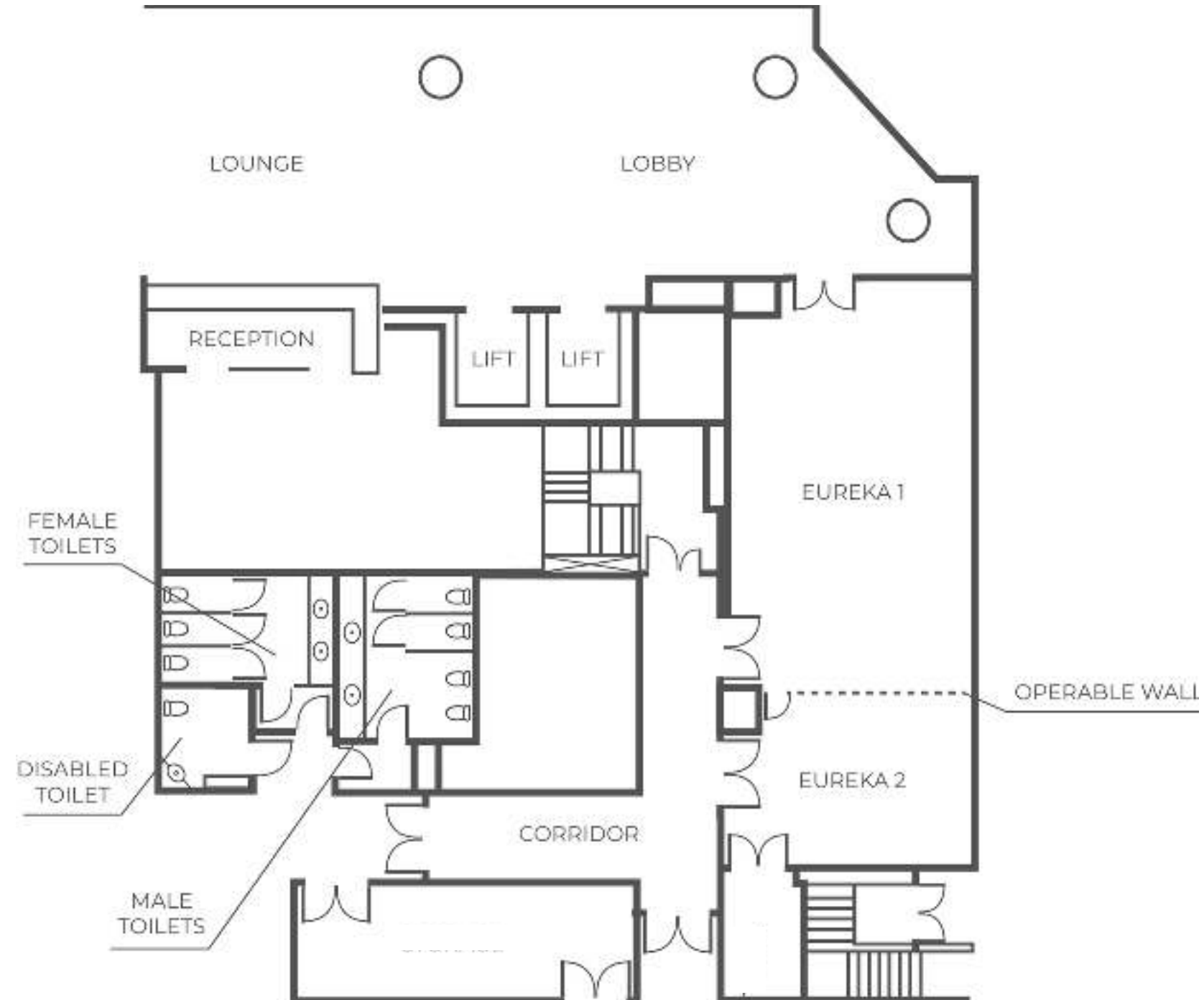
Our helpful staff is on hand to assist you with anything you may need during your visit – from directions to nearby attractions, to recommendations on things to do, see and experience within the city.



MERCURE MEETINGS

INTRODUCTION CARBON NEUTRAL MEETINGS MINDSPACES MEETING FACILITIES HOTEL FACILITIES **FLOOR PLAN** CAPACITY CHART MEETING PACKAGES

FLOOR PLAN



MERCURE MEETINGS

[INTRODUCTION](#) [CARBON NEUTRAL MEETINGS](#) [MINDSPACES](#) [MEETING FACILITIES](#) [HOTEL FACILITIES](#) [FLOOR PLAN](#) **[CAPACITY CHART](#)** [MEETING PACKAGES](#)

CAPACITY CHART

VENUES	THEATRE	CLASSROOM	BOARDROOM	U-SHAPE	BANQUET	CABARET	COCKTAIL
Eureka 1+2	60	39	36	33	60	50	80
Eureka 1	32	22	24	21	36	24	50
Eureka 2	-	-	12	9	-	-	15

*CLASSROOM, BOARDROOM AND U-SHAPE CAPACITY IS BASED ON 3 PERSONS PER TABLE
CLASSROOM NUMBERS ARE BASED ON SCREEN AND PROJECTOR IN USE
COCKTAIL CAPACITY IS BASED ON NO TABLES, FOR A STANDING, CANAPE EVENT ONLY



DAY DELEGATE PACKAGES

BASED ON GROUP OF MINIMUM 20 DELEGATES

FULL DAY PACKAGE FROM \$65 PER PERSON | HALF DAY PACKAGE FROM \$60 PER PERSON

WHAT IS INCLUDED

CATERING ON THE DAY:

ARRIVAL MORNING TEA

As a great way to start any day: this include variety of teas and coffees, milk and sweets.
Served in the pre-function area.

THE LUNCH TABLE

Served in the pre-function area assortment of sandwiches, one chef's selection of a hot item, salads, fresh seasonal fruit, cheese and options of beverages. Delegates to mingle and enjoy lunch whilst networking. Buffet on request with minimum 25 people required.

AFTERNOON TEA

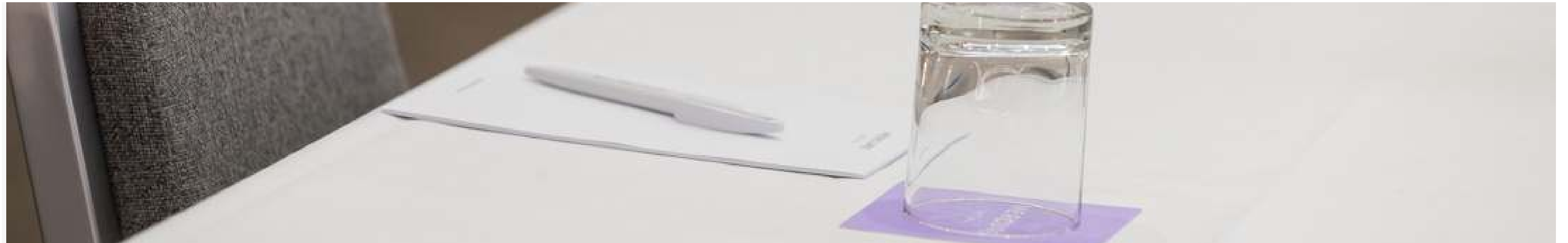
Served in meeting room: light snacks with teas and coffees to keep you moving.

OTHER INCLUSIONS:

- Full or half day room hire cost (depending on the package chosen) with the room arrangements of your choice.
- Complimentary Wi-Fi.
- Audio and visual equipment including projector, a screen and a flip chart.



PACKAGE UPGRADES



- Buffet lunch served in the pre-function area + \$15 per person
- 1 hour canape package + \$228 per person / 2 hour canape package \$35 per person
- 2 course dinner + \$60 per person / 3 course dinner \$70 per person
- 1 hour beverage package \$28 per person / 2 hour beverage package \$40 per person / 3 hour beverage package \$50 per person



AUDIO VISUAL & STAGING SERVICES



Data projectors, built in screens, flip chart, white boards, TV's and microphone are available on site.

Should you have additional audio visual requirements, we are happy to put you in touch with a local, trusted audio visual provider.

Our experienced team are available to assist with anything else you may need to enhance your meeting or event.



LET'S MAKE IT REWARDING

HOST YOUR NEXT EVENT, SEMINAR, OR SOCIAL GATHERING AT OUR HOTEL & EARN

2X reward points

HOW TO BE REWARDED:

- Register for the offer (join ALL Meeting Planner if you are not already a member)
- Hold and pay for your event by 31st May 2025.
- Your points will be credited to your account the month after your event has been paid for.

REGISTER NOW



CONTACTS

MERCURE MELBOURNE SOUTHBANK

CONTACT DETAILS

9 Riverside Quay, Southbank 3006
+61 (03)_7046 1300
mercure.melbournesouthbank.sales@accor.com

MERCUREMELBOURNESOUTHBANK.COM.AU
[@MERCUREMELBOURNESOUTHBANK](https://www.instagram.com/MERCUREMELBOURNESOUTHBANK)

