



PULLMAN BANGKOK KING POWER

Blur the boundaries of work and leisure
and make the world your playground with us today.

THE PLACE TO MEET

Featuring **354 guestrooms**, consisting 4 room types including 18 Deluxe Rooms with private balcony that overlook the lush botanical garden or swimming pool, **6 restaurants and bars** as well as **20 meeting rooms** including 2 ballrooms '*Eternity and Infinity*' which can cater up to 600 people.

Located on Rangnam Road, next to the King Power Duty Free Rangnam Complex with easy access to BTS Skytrain at Victory Monument Station (Exit No. 2) plus complimentary shuttle Tuk-Tuk service to/from the hotel and few minutes away from Siam Square; shopping district and Chatuchak Weekend Market.

Transfer to/from Suvarnabhumi Airport is about 40 minutes via the Suvarnabhumi Airport Rail Link - Phayathai Station, which is within walking distance.

THE BEST OF THE HOTEL



TENSHINO, a chic innovative Japanese restaurant with a touch of Bohemian chic. The restaurant serves unique Japanese dishes for dinner.



THE JUNCTION AT PULLMAN, a stylist lobby by Pullman where barista meets pop-up bar. A place to meet with rotative food & beverage offers for sit-in and take away.

INSPIRED DESIGN

Welcome to the world's first Pullman with the brand's global concept '*Our World is Your Playground*' that caters to the to the new generation of mobile, hyper-connected, and sophisticated world travelers and also the first AccorHotels property bringing this concept to life in Asia.

With the inspiration of the award-winning architects and interior designers Architects 49, the new design is cosmopolitan, timeless and stimulates social interaction, offering guests and locals a compelling new choice in accomodation, show stopping events and innovative dining.



OPEN KITCHEN at Eternity Ballroom cutting-edge technology from the Italian brand Marrone which where coffee breaks are freshly prepared according to your preferences by our culinary team.

354 ELEGANT, COMFORTABLE ROOMS

- 163 Superior Rooms
- 100 Deluxe Rooms including 2 rooms for disabled guests
- 18 Deluxe Rooms with Balcony
- 52 Executive Rooms
- 21 Suites

With:

- Pullman bedding concept with comfort pillows
- Separate bathtub and rain shower
- New York's C.O. Bigelow's bath and skincare products
- LED Smart TV and 6 USB charging ports
- Iron, Ironing board and hair dryer
- FREE WiFi and Wireless LAN
- FREE 2 bottles of water per day, coffee and tea making facilities
- Complimentary online newspaper
- Discount shopping coupons at King Power Rangnam Complex, next to the hotel

In the Executive Rooms and Suites:

- Pillow menu and In-Room Fitness: yoga mat and 2 free weights
- Nespresso® coffee machine
- Executive Lounge with benefits including 1-hour complimentary use of the 20th floor meeting room and King Power Lounge at Suvarnabhumi Airport - Concourse A of Suvarnabhumi Airport's passenger departure terminal

FLEXIBLE CREATIVE DINING OPTIONS

- **Cuisine Unplugged**, an international buffet concept with organic ingredients plus well-being drinks.
- **Glen Bar**, a stylish destination bar with mezzanine lounge and modular for private event. Open from 18.00 - 01.00 hrs.
- **Tenko Omakase**, led by Chef Goji Kobayashi from 1- Michelin Starred Restaurant in San Francisco who designs all courses. Open from 18.00 – 23.00 hrs.
- **Tenshino**, a chic innovative Japanese restaurant with a touch of Bohemian chic. Open from 18.00 – 23.00 hrs.
- Cool refreshments, cocktails and snacks available at **Pool Bar**. Open from 10.00 – 19.00 hrs.

HIGH-LEVEL MEETING EQUIPMENT AND SERVICES

The venue can host a wide range of events with Co-Meeting by Pullman concept and a total of more than 1,500 sq.m. in 20 meeting rooms:

- **2 Ballrooms:** Eternity and Infinity
- **Eternity**, 470 sq.m of daylight ballroom can cater up to 500 guests with 110 sq.m. pre-function space and open kitchen from the Italian brand Marrone and a dedicated car access (W 2.80 m. & H 2.90 m.)
- **Infinity** ballroom, 600 sq.m with 190 sq.m. pre-function space, cater up to 600 guests and can be divided into 2 separate rooms
- Innovative themed coffee breaks
- Chill Out Space for a relaxing setting during innovative breaks
- For both the Eternity & Infinity ballrooms, the parking area is permitted to be used as the loading area for small trucks

WELL-BEING AT PULLMAN SPA & FIT, LOCATED ON THE 4TH FLOOR

- Rejuvenation at **Le Spa** with body and facial treatments, including Hammam and Endermologie® slimming treatments. Open from 09.00 - 22.00 hrs.
- Relaxation at **Fitness Center** with high-tech fitness equipments and 27-metre outdoor swimming pool with Jacuzzi. Open from 06.00 - 22.00 hrs.

ACCESS TO THE HOTEL

PULLMAN BANGKOK KING POWER

8/2 Rangnam Road, Thanon-Phayathai, Ratchathewi, Bangkok 10400, Thailand
T.+66 (0) 2680 9999 F.+66 (0) 2680 9998

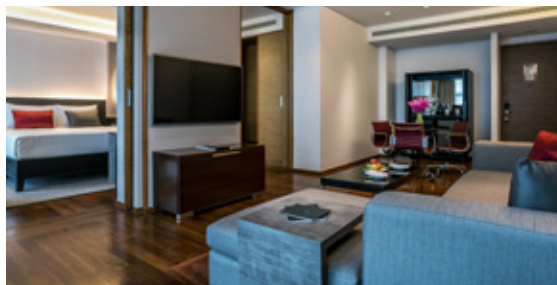
E-mail: H6323@ACCOR.COM

WWW.PULLMANBANGKOKKINGPOWER.COM

pullmanhotels.com



1.



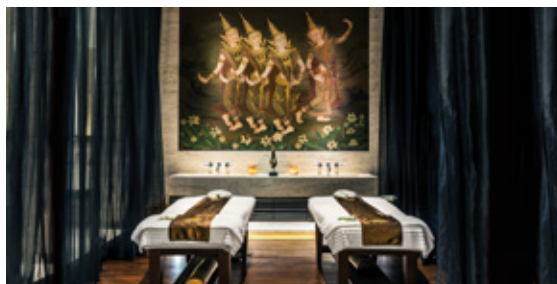
2.



3.



4.



5.

1. DELUXE WITH BALCONY, 36 sq.m.
2. SUITE WITH LIVING ROOM, 64 sq.m.
3. GLEN BAR ON GROUND FLOOR
4. CUISINE UNPLUGGED ON GROUND FLOOR
5. LE SPA ON THE 4TH FLOOR

CONNECTIVITY BY PULLMAN

- Free Wi-Fi throughout the hotel
- Connectivity Lounge by Pullman, with providing office services

• BY PLANE:

1. Suvarnabhumi International Airport (BKK): 40 mins by taxi via expressway
2. Don Muang Airport (DMK): 30 mins by taxi via expressway

• BY AIRPORT RAIL LINK (ARL): 30 mins to/from Suvarnabhumi International Airport via Suvarnabhumi Airport Rail Link - Phayathai Station is within walking distance

• By BTS SKYTRAIN: Victory Monument Station (Exit no. 2) with complimentary hotel shuttle tuk-tuk service – to/from the hotel