

# Hotel *Fact Sheet*



S O F I T E L  
QUEENSTOWN HOTEL & SPA

S O F I T E L



# Kia *Ora*..



And welcome to Sofitel Queenstown Hotel & Spa,  
a luxurious boutique hotel nestled in the heart of New Zealand's South  
Island. Situated just steps away from Lake Wakatipu, you have arrived  
at the ultimate destination for relaxation, indulgence and adventure..





# Facilities & Services

CENTRAL TOWN LOCATION

LE SALON ROUGE, SPEAK-EASY STYLE GIN  
BAR

LE PETIT SALON RESTAURANT

SOFITEL SPA WITH L'OCCITANE

UNIQUE MEETING & EVENT SPACES

AUDIOVISUAL SERVICES

24-HOUR RECEPTION

COMPLIMENTARY WIFI

SPECIAL ACCESS FACILITIES

24-HOUR IN ROOM DINING

CONCIERGE SERVICE

SOFITEL FITNESS

GUEST LAUNDRY

VALET CAR PARKING





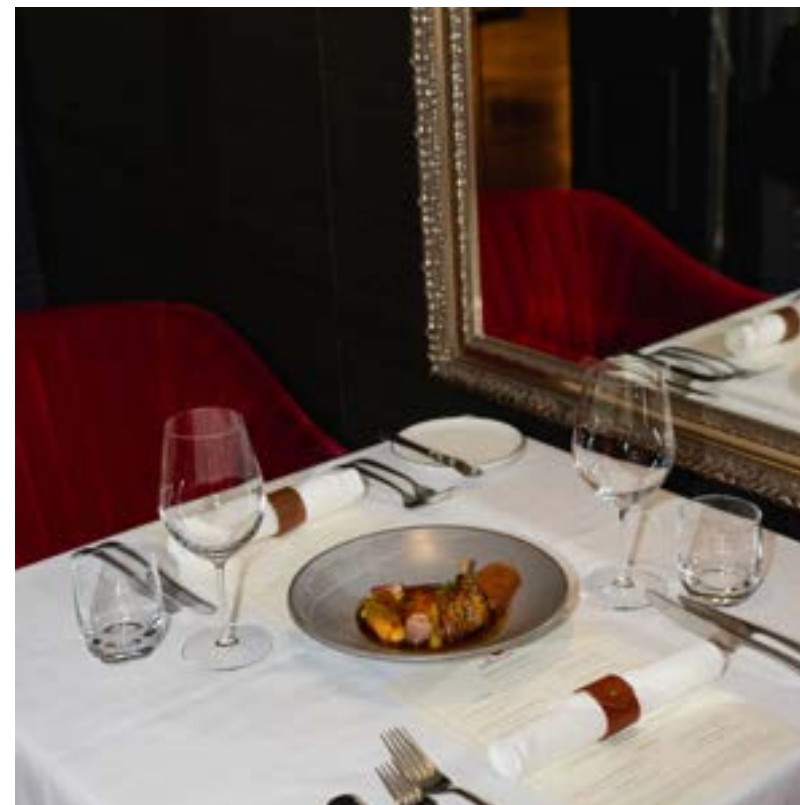
# Welcome

Indulge in a world of alpine luxury and *sophistication* at Sofitel Queenstown Hotel & Spa



## 84 rooms & Suites

- 51 Superior Rooms
- 20 Luxury Rooms
- 8 Junior Suites
- 2 Prestige Suites
- 1 Opera Suite
- 2 Penthouse Suites



## Restaurant

Sample the very best of Central Otago produce in Le Petit Salon, Sofitel Queenstown's new fine dining restaurant. Indulge in our exquisite five-course degustation menu curated by Executive Chef Lindsay Bennett. With only 12 place settings, Le Petit Salon delivers a unique dining experience like no other.

## Bar

Le Salon Rouge is a celebration of the senses featuring rich reds and velvet décor throughout, serving local gins and delectable cocktails crafted by our in-house mixologists in an intimate setting. Available for private hire.



## Cafe

Left Bank Bistro provides a delightful ambiance for a European-style breakfast & brunch. Also available for private dinners for up to 40 guests.





# Rooms & Suites



## Superior Room

- 38 m2 | 409 sq. ft.
- Airconditioning
- Township views
- Mini bar
- King / Double MyBed™
- Pillow menu
- Bathroom with double spa bath
- Underfloor heating
- Heated towel rail



## Luxury Room

Luxury Rooms are rooms of distinction, enjoying views of the majestic Remarkable mountains. With a king-size Sofitel MyBed™ plus pillow menu, these rooms have been designed for deep and restful sleep. The marble bathroom boasts under-floor heating, with a rain shower and double spa bath. Includes daily Club benefits. 38 m2 | 409 sq. ft.

## Junior Suite

62 m2 | 667 sq. ft.

The Junior Suite is our premium room with a separate living area, dining table, a plush lounge set, a private Juliette balcony, king-size Sofitel MyBed™ plus pillow menu. These luxurious suites enjoy incredible views of the township and The Remarkables, and include daily Club benefits.



## Prestige Suite

- 88 m2 | 947 sq. ft.
- Air-conditioning
- Mini Bar
- Remarkable Mountains/Town view
- King Sofitel MyBed™
- Pillow Menu
- Dining Table
- Bathroom with Double Spa Bath
- Under-floor Heating
- Heated Towel Rail







# Top Suites

The ultimate night's rest awaits for your VIP's in one of our opulent, chic and contemporary top suites. Your delegates will enjoy the very best views that Queenstown has to offer from the balcony of their Opera Suite or Penthouse.



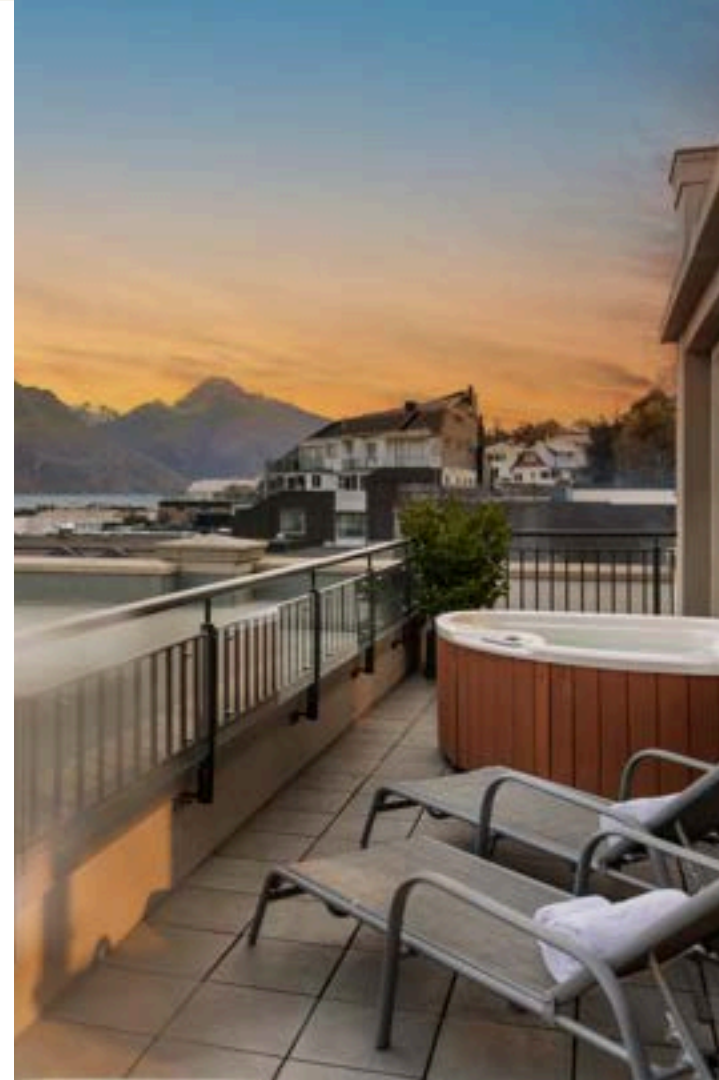
## Penthouse No.5

- 100 m2 | 1076 sq. ft.
- Lake & Mountain View
- Private Terrace with Sun Loungers
- Three Person Jacuzzi
- King Sofitel MyBed™
- Powder Room
- Electric Fireplace
- Bathroom with Double Spa Bath
- Under-floor Heating



## Opera Suite

- 65 m2 | 700 sq. ft.
- Lake & Mountain Views
- Private Terrace
- Three Person Jacuzzi
- King Sofitel MyBed™
- Balmain Bathroom Amenities
- Electric Fireplace
- Dining Table for 4 Guests
- Bathroom with Double Spa Bath
- Under-floor Heating



## Penthouse No.10

Your own exclusive residence in the heart of New Zealand's alpine capital, Queenstown.

- 225 m2 | 2,422 sq. ft.
- Dining Room & Movie Theater
- Walk-In Dressing Room
- Private Oversized Terrace
- Six Seater Jacuzzi
- Rainshowers and Soak Tub
- Powder Room
- 2 Fireplaces
- Dedicated Guest Relations Executive





# Sofitel Spa with L'Occitane



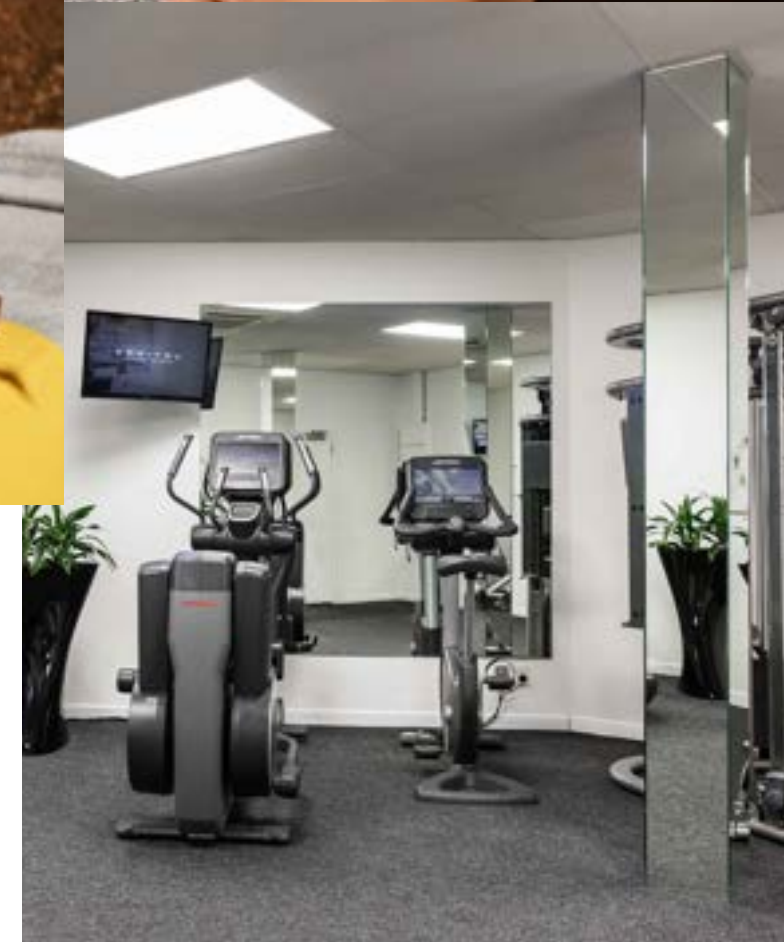
Escape to a tranquil haven and melt away the stress of daily life at Sofitel Spa with L'Occitane.

Energise, refocus and refresh your delegates at your next meeting or event.

Awaken your mind, body and spirit with a celebrated range of traditional massage therapies, beauty treatments and healing Maori rituals such as the Greenstone Massage.

## Sofitel Fitness

Fully equipped gym, appointed with strength-building and cardio equipment





# Meeting Spaces & Function Rooms

## *Primary meeting spaces*

- LA GALERIE
- THE BOARDROOM

## *Spaces available for private hire, cocktail functions, dinners & events*

- LEFT BANK BISTRO
- LE PETIT SALON
- LE SALON ROUGE
- THE LOBBY
- PENTHOUSE NO.10





# Capacity

Function/Meeting Space	Meters Squared	Banquet	Cabaret	Cocktail	Theatre	Classroom
La Galerie	95	60	50	120	90	50
The Boardroom	64	40	35	50	50	30
Le Salon Rouge	-	30	-	100	-	-
Le Petit Salon	-	20	-	30	-	-
Left Bank Bistro	-	40	-	60	-	-
Penthouse No.10	225	20	-	40	-	-

*\*Please note that Penthouse No.10 can be used for exclusive and intimate meetings and cocktail events, has no current AV facilities, is subject to availability and pricing is available upon request.*

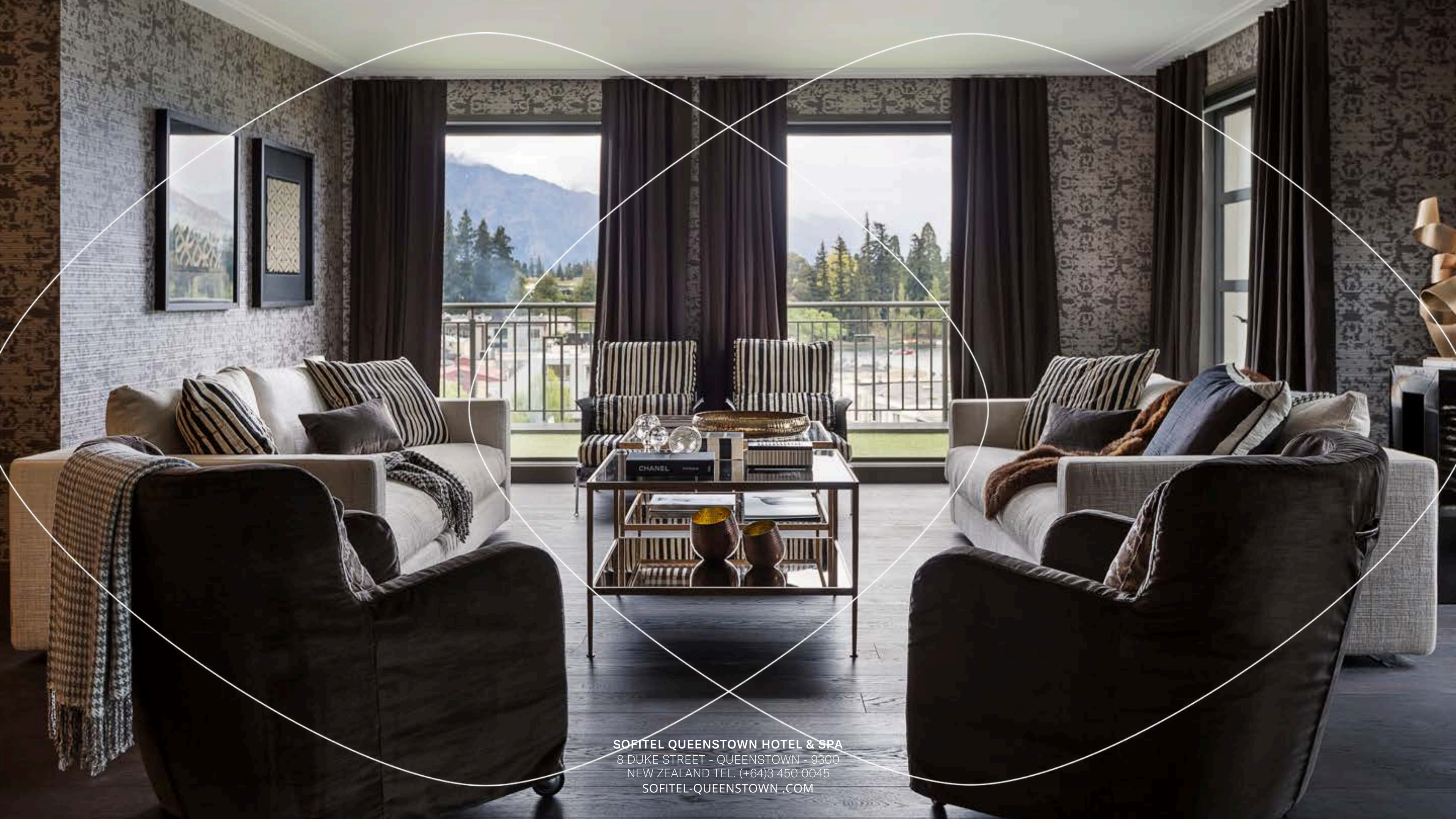


# Why Queenstown?

- Adventure Capital of the *world*
- All season destination
- 4 Ski Resorts within a 2 hour drive of Queenstown
- Direct short haul flights from key ANZ cities
- Premier luxury location in New Zealand
- Renown for Gastronomy and Wine
- Host to the yearly NZ Golf Open
- Location known for sustainable tourism and Carbon Zero goals







**SOFITEL QUEENSTOWN HOTEL & SPA**  
8 DUKE STREET - QUEENSTOWN - 9300  
NEW ZEALAND TEL. (+64)3 450 0045  
[SOFITEL-QUEENSTOWN.COM](http://SOFITEL-QUEENSTOWN.COM)