

NOVOTEL

NOVOTEL

Novotel Bangkok Platinum
Pratunam



Hotel Location

Novotel Bangkok Platinum Pratunam is a 288-rooms, international 4-star hotel in the heart of the shopping district. With its city centre location, the hotel offers easy access to Bangkok's main cultural attractions and the business district.



Hotel is located on top of The Platinum Fashion Mall, the largest wholesales shopping center in Thailand.

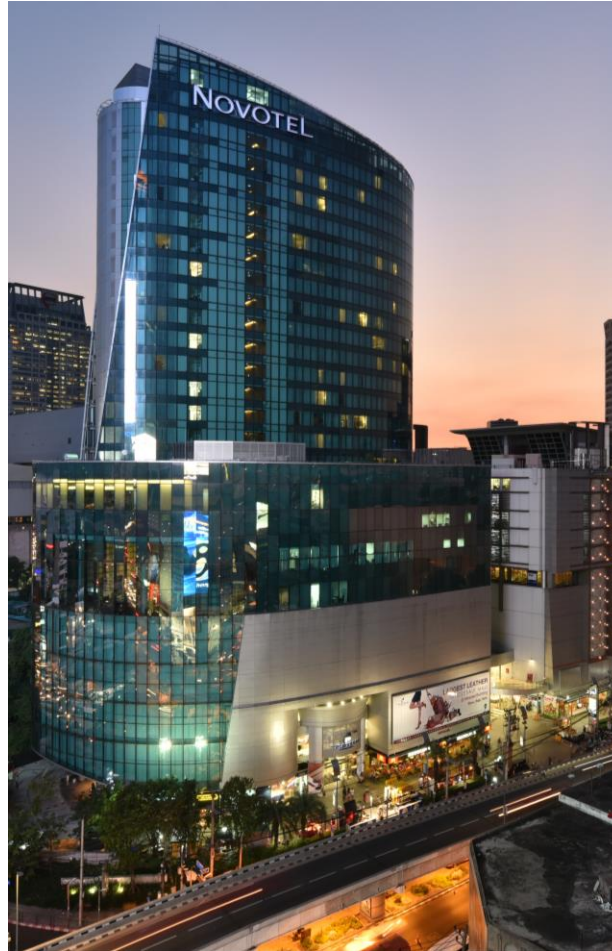


ACCESS TO EVERYWHERE WITH R-WALK

With the new R Walk (Bangkok Skyline), reaching the hotel or exploring Ratchaprasong has never been easier. It easy link you to Central World, The Market, Big C, Gaysorn Plaza as well as BTS Chidlom Station

HOTEL BUILDING & LOBBY

- Reception and check-in desk
- PLAY Table & Kids Zone
- The SQUARE Restaurant
- Platinum Lounge
- Executive Lounge



NOVOTEL

BANGKOK
PLATINUM PRATUNAM

Floor 6th – 25th | Novotel Platinum


THE PLATINUM
FASHION MALL

Floor 1st – 5th | The Platinum Fashion Mall

Accommodation (288 Rooms)

Room Types	No. of rooms
Standard Room	66
Superior Room	97
Deluxe Room	40
Premier Park View	26
Executive Park View	23
Family Room	25
Executive Suite	11



ROOM AMENITIES

Flat Screen TV, Safety Box, Tea&Coffee Corner, Iron, Work Desk, Room Service and Rain Shower (Bathtub available at Executive Suite)

STANDARD ROOM

- Flat Screen TV, Safety Box, Tea&Coffee Corner, Work Desk , Rain Shower
- Complimentary WiFi internet
- 22 sqm (floor 10th – 19th)
- Maximum 2 Adults
- Extra Bed is not applicable
- Double Bed only



SUPERIOR ROOM

- Flat Screen TV, Safety Box, Tea&Coffee Corner, Work Desk , Rain Shower
- Complimentary WiFi internet
- 23 sqm (floor 20th – 22nd)
- 23 sqm (floor 10th – 19th)
- Maximum 2 + 1 Adults
- Extra Bed is applicable
- Double and Twin Beds available

DELUXE ROOM

- Flat Screen TV, Safety Box, Tea&Coffee Corner, Work Desk , Rain Shower
- Complimentary WiFi internet
- 27 sqm (floor 20th – 25th)
- Maximum 2 + 1 Adults
- Extra Bed is applicable
- Double and Twin Beds available

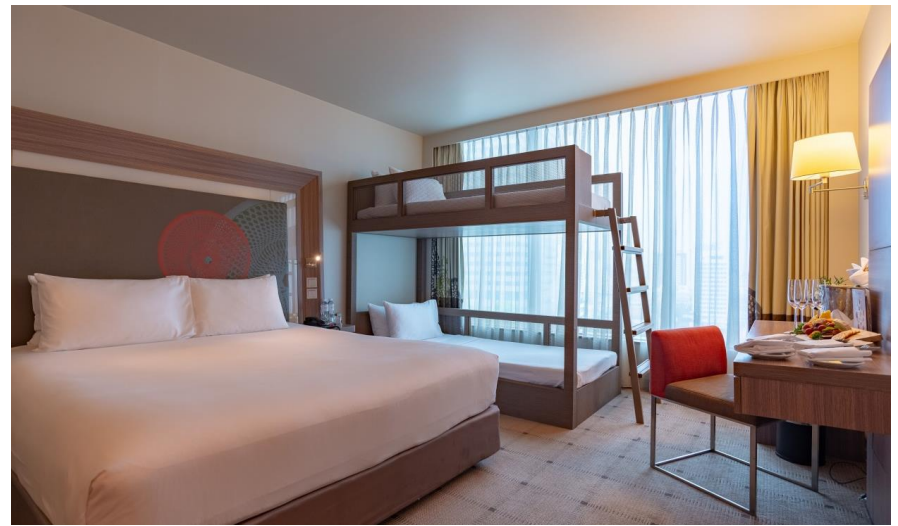


PREMIER PARK VIEW

- Park view
- Coffee Machine
- Complimentary WiFi internet
- 27 sqm (Floor 16th – 19th)
- Maximum 2 + 1 Adults
- Extra Bed is applicable
- Double and Twin Beds available

FAMILY ROOM

- Bunk Bed
- Flat Screen TV, Safety Box, Tea&Coffee Corner, Work Desk , Rain Shower
- Complimentary WiFi internet
- 27 sqm (floor 10th – 25th)
- Maximum 2 + 2 Adults or 3 Adults + 1 Child
- Extra Bed is applicable
- Double and Twin Beds available



EXECUTIVE ROOM

- Access to Executive Lounge with complimentary breakfast & evening cocktails
- Coffee Machine
- Complimentary WiFi internet
- 23 – 28 sqm (Floor 23rd – 25th)
- Maximum 2 + 1 Adults
- Extra Bed is applicable
- Double and Twin Beds available

EXECUTIVE SUITE

- Access to Executive Lounge with complimentary breakfast & evening cocktails
- Coffee Machine
- Complimentary WiFi internet
- 52 sqm with a separate lounge area and bathroom
- Bathtub available
- Maximum 2 Adults + 2 Children
- Extra Bed is applicable



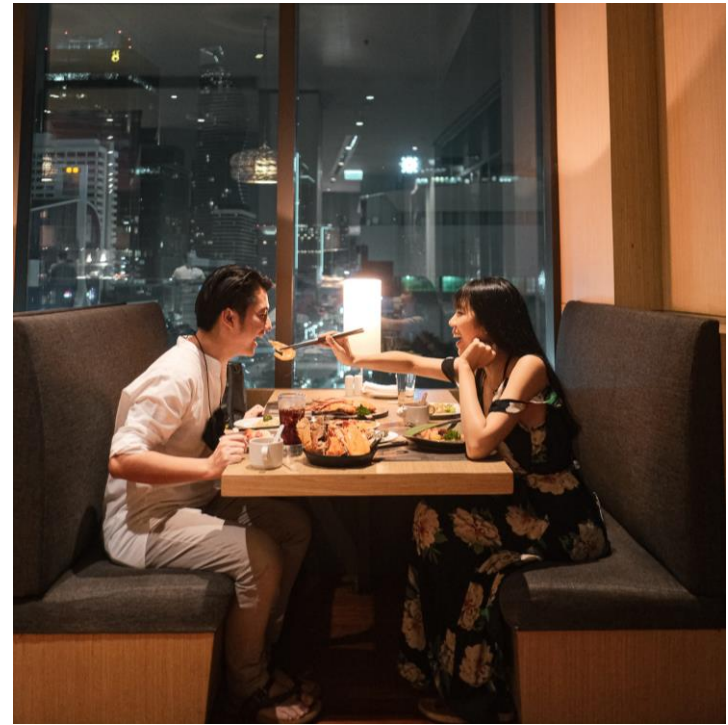
Restaurants & Bars

At The SQUARE on the 6th floor, you can enjoy a trendy and welcoming dining venue with a large selection of international and Asian dishes. Or opt for a chic hang-out spot like Platinum Lounge. Chill out with a view at View Rooftop Bar Bangkok on the 9th floor while you try our large selection of cocktails and all day comfort food.



THE SQUARE RESTAURANT

A trendy and relaxed venue with international and Thai cuisine available a la carte or as a buffet.
Outdoor terrace available.
On the 6th Floor.



Opening Hours

- Breakfast: 6:00 – 10:30 hrs.
- Lunch: 12:00 – 14:30 hrs.
- Dinner: 15:00 – 22:00 hrs.

PLATINUM LOUNGE

A modern Contemporary Bangkok dining venue with incredible city views. Offering Contemporary Western Food, Traditional Thai Food, Signature Cocktails and various dessert that are not to be missed.

- Open everyday from 12:00 – 22:00 hrs.



View Rooftop Bar Bangkok

Chill out with a View!

A fantastic place on the 9th floor to relax throughout the day or while the sun sinks below the Bangkok skyline.

Open everyday from 15:30 – 01:00 hrs.

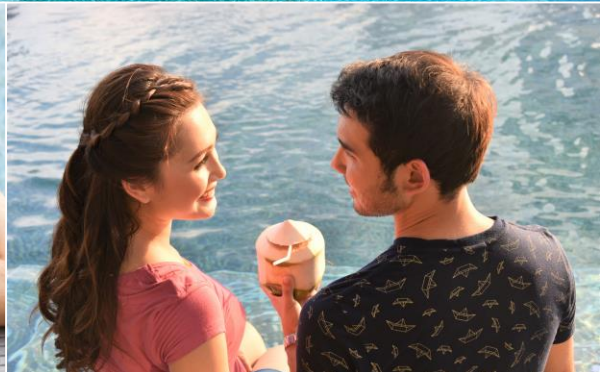


SWIMMING POOL

Located on the 9th Floor of the Novotel Bangkok Platinum Pratunam offers a relaxing retreat away from the hustle of the city. Hotel guests can swim a few laps in the outdoor Swimming Pool or enjoy ample sunbathing options with stunning city views of the heart of Bangkok.

Hotel guests can order from View Rooftop Bar Bangkok's menu and enjoy snacks or drinks as they unwind on the deck chairs and day lounges.

Opening Hours : 6:00 – 20:00 hrs.



FITNESS & LET'S RELAX SPA



Reach your fitness goals with modern equipment and qualified staff while surrounded by natural light and wrap-around city views.

Opening Hours : 6:00 – 21:00 hrs.



The Let's Relax Spa Experience: Immerse in the Authentic Thai Spa Experience through the Five Body Senses, from the moment you stepped in.

With over 20 years experience in the spa industry serving over 6 million customers, we continue our mission of providing all our customers with an excellent authentic Thai spa experience. We always work to improve on our 5 key experiences that we believed will take our customers to the height of relaxation. It's these value that really make us Let's Relax Spa.

Opening Hours : 10:00 – 24:00 hrs.

MEETINGS @ NOVOTEL

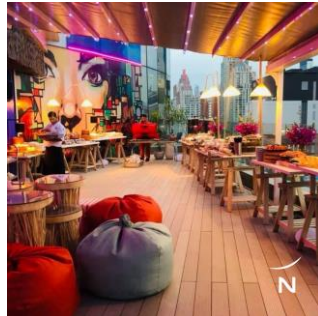
- 5 Multi-purpose meeting rooms
- Rooftop Bar which can host a private event
- Daylight Meeting Room
- Flexible connecting rooms
- FREE WIFI-Internet access
- Fully equipped with latest audio and visual projector technology



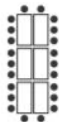

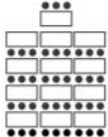
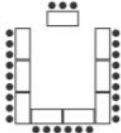
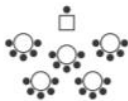
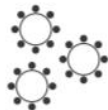
PRIVATE FUNCTIONS

Make your event even more special at our ballroom or at our unique View Rooftop Bar.

We offered breath taking view, entertainment and warm atmosphere. The Function is a uniquely versatile space, perfect for any occasion.



Capacity of the meeting rooms in number of guests:

FUNCTION ROOM Located on 7 th floor.	DIMENSION		I-shape 	Theatre 	Classroom 	U-Shape 	Cabaret 	Banquet 	Cocktail Reception
	Area (Sqm)	Ceiling Height (m)							
Amber	34	3.8	12	20	16	12	-	-	-
Topaz I	25	3.8	12	30	16	16	-	20	15
Topaz II	65	3.8	18	50	24	18	32	40	50
Topaz Suite	90	3.8	30	80	40	34	55	60	80
Sapphire I	105	4.2	20	60	30	20	48	60	70
Sapphire II	105	4.2	20	60	30	20	48	60	70
Sapphire Suite	270	4.2	40	250	120	40	140	150	250
View Rooftop Bar Bangkok	258	-	-	-	-	-	-	80	160

MEETING PLANNER @ NOVOTEL PLATINUM

Host events and earn points

We're with you, every step of the way



Meetings

We have all the equipment you need to make sure your message is heard.



Conferences

Our conference spaces are fully equipped and can adapt to all your needs.



Evening events

Gala evenings, events, parties - make it sparkle.

[Find out more](#)



2 euros spent = 1 Reward point

Earn 1 Reward point for every 2 Euros spent whenever you plan an event in one of our hotels.



Flex to fit

Finance future events using your points. Or use them for your next trip, for concert tickets, or a match. Your points, your choice.



Sharing points

You can also share your points with other members of ALL.



Points, whenever.

There are no blackout dates on Reward points. Use them whenever you choose.



Points and peace of mind

There are no expiry dates on your points. No rush, no fuss.



Plan more, earn more

Earn even more Reward points whenever you plan an event.



Free membership

It's quick and easy to join the ALL Meeting Planner.

Thank you

Contact

Sasiphan Kajonphan (Namtan)
Senior Sales Manager – Corporate & Government
H7272-SL4@accor.com
T. +66(0) 2 209 1700

Ployrawee Sukploypan (Ploy)
Assistant Event & MICE Manager
H7272-SL2@accor.com

Sasikarn Srinawama (Ice)
Assistant Sales Manager – Corporate & MICE
H7272-SL10@accor.com

Supawan Supantee (Kik)
Sales Manager – Leisure
H7272-SL6@accor.com

