



GALLERY  
HOTEL  
COLLECTION



**VIE**  
HOTEL  
BANGKOK

*Create the Moment*



Plan in confidence at **VIE Hotel Bangkok**, one of best locations for MICE events in Bangkok. Our newly renovated function venue on the 12<sup>th</sup> floor offers great function spaces and a celebrated banqueting service as well as a dedicated and experienced team who are delighted to assist you in every way to ensure your event is a success.

Extremely convenient to reach, the hotel is centrally located in the city's commercial district, with Expressway entrance/exits nearby. Besides being within walking distance to Bangkok's famous malls, it is just a few steps from the BTS Skytrain Ratchathewi station, which connects to the Airport Link train for easy transfers.

The flexible function rooms offer your participants a comfortable environment for important discussions, with high ceilings and energizing natural light. Function 1 and 2 can stand alone as excellent breakout rooms or can be combined to form a larger venue, while the Boardroom is designed for more intimate meetings.

Our newly refurbished Ballroom is a stunning venue which never fails to impress, as it seamlessly transforms for a fully equipped conference, a gala social event or a gorgeous wedding. Its large Lounge is perfect for a networking event or pre-function cocktails.



## *Every Function Space Provides*







- Welcoming natural light and high ceilings
- High-speed internet access and full audiovisual services
- Our delicious banqueting known for excellent catering options
- Our VIE Professional Events Team, dedicated to paying utmost attention to your requests and working creatively to customize a memorable experience for you

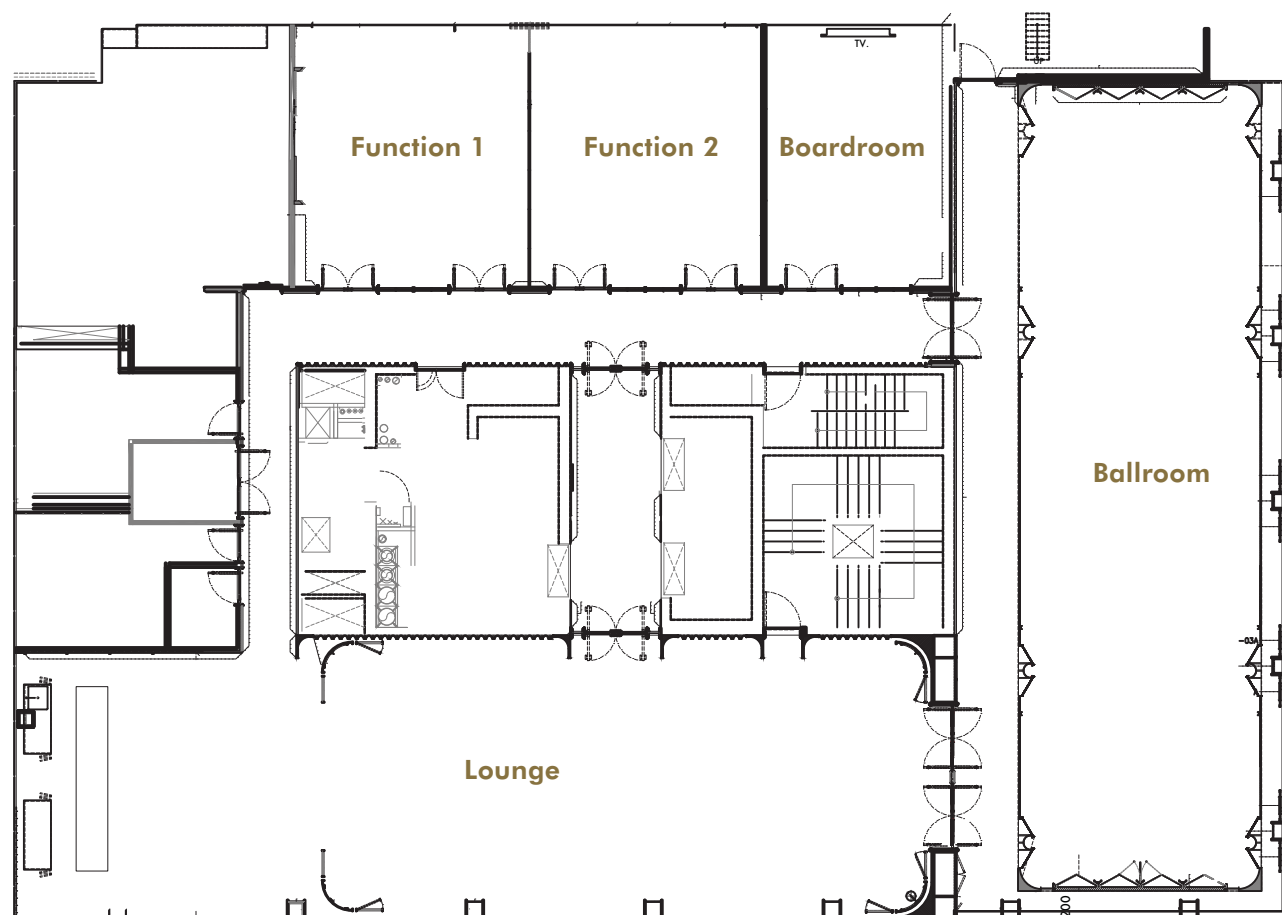
Event facilities on the 12<sup>th</sup> floor, measuring a total of 500 sq m, include our newly refurbished and stunning Ballroom, able to cater for up to 200 persons, as well as its large Lounge (foyer) which is just right for pre-function cocktails or a networking event accommodating up to 80 persons.

Our Function Rooms 1 & 2 offer a variety of uses. With a 2.5 m ceiling and abundant natural light, they can be used separately or combined into an excellent breakout room holding up to 60 persons.

The Boardroom, also with an inspiring 2.5 m ceiling, is ideal for more intimate meetings of up to 20 persons.

## Capacity of function rooms

Function Rooms	Dimension (Width x Length x Height)	Size (Sqm)	 Theatre	 Classroom	 U - Shape	 I - Shape	 Cocktail	 Round Table
Ballroom	8.7m x 21m x 6m	190	180	110	65	60	200	100
Lounge	6.9m x 24m x 2.5m	175	-	-	-	-	80	-
Function 1	5.9m x 7.1m x 2.5m	48	30	12	10	12	20	30
Function 2	6m x 7.1m x 2.5m	58	30	12	10	12	20	30
Function 1&2	12m x 7.1m x 2.5m	106	60	24	20	24	40	60
Boardroom	4.7m x 7.1m x 2.5m	35	20	12	12	10	15	20







## Ballroom

Beautifully refurbished, our 190 sq m Ballroom is a stunning venue and the perfect fit for your next memorable event. As adaptable as it is magnificent, its various seating arrangements and the latest in audiovisual technology provide you with a seamless transformation into the venue you need, whether a formal corporate conference or an extravagant social event.



Seating configurations start from up to 60 persons to a standing cocktails arrangement for 200 persons.

- Inspiring 7 m high ceilings
- Refreshing natural lighting as well as spectacular views of the night sky and cityscape.
- Comprehensive audiovisual equipment

### Seating arrangement capacity

- Theater seating: 180 persons
- Classroom arrangement: 110 persons
- U or I arrangement: 65 and 60 respectively
- A roundtable: 100 persons
- Standing cocktails setup: 200 persons

## Function 1-2

Function 1 and Function 2 are on the same floor as the Grand Ballroom, at the other end of the large Lounge, an excellent foyer for pre-event cocktails or networking stages. Designed to make every event a meaningful and successful experience for your participants, they are both enhanced with high ceilings and allow excellent natural lighting, encouraging a mood of abundant energy with relaxed confidence.



Slightly different in size and excellent spaces on their own, these flexible spaces can also be combined into a spacious breakout room, doubling the capacity.

**Function 1 is 48 sq m (5.9 m x 7.1 m) and Function 2 is 58 sq m (6 m x 7.1 m)**

- Inspiring 2.5 m high ceilings
- A wide variety of setups
- The two rooms can be combined

### Seating capacity with combined Function 1 and 2

- Theater arrangement: 60 persons
- Classroom setup: 24 persons
- U-shape: 20 persons
- I-shape: 24 persons
- Standing cocktails arrangement: 40 persons
- A roundtable: 60 persons



## Boardroom

The smaller 35 sq m Boardroom is ideal for more intimate meetings, and also offers the same high ceilings, natural light and technological amenities to assist you in holding a meeting that meets its full potential.

- Theater arrangement: 20 persons
- Classroom setup: 12 persons
- U-shape: 12 persons
- I-shape: 10 persons
- Standing cocktails arrangement: 15 persons
- A roundtable: 20 persons



# Lounge

Our spacious Lounge is an attractive lounge located on the 12<sup>th</sup> floor between the magnificent and flexible Grand Ballroom and our combinable Function 1 and 2 meeting rooms, a splendid space for creating an elegant pre-function event or to make the perfect networking environment.

It is also a convenient venue which brings together our innovative spirit of adaptability with a modern and elegant style.

- 175 sq m total, measuring 6.9 m x 24 m with an inspiring 2.5 m high ceiling
- Accommodates 80 persons in a standing cocktail arrangement
- Cater to a small banqueting setup serving desserts with gourmet coffee and teas
- Showcast live cooking stations to add a particularly delicious aspect to your event





# Banqueting

Enhance your Function meetings and events with a wide range of selections by our Banqueting Team.

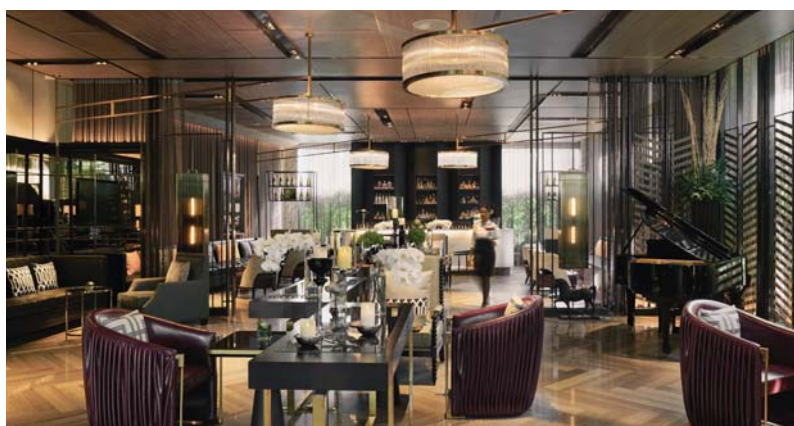
Dining at VIE Hotel Bangkok is a highly praised experience and our restaurants are superb. Arranging an event to take advantage of the delicious culinary options available.

Our creative team is delighted to plan with you to set up the banqueting experience that is just perfect for your event, and we have plenty of space to do it right, with high ceilings and windows with glittering views of the city. The spacious Lounge between the Grand Ballroom and Function 1& 2 offers an excellent atmosphere for coffee, dessert, wine or cocktail displays and exciting live cooking stations.



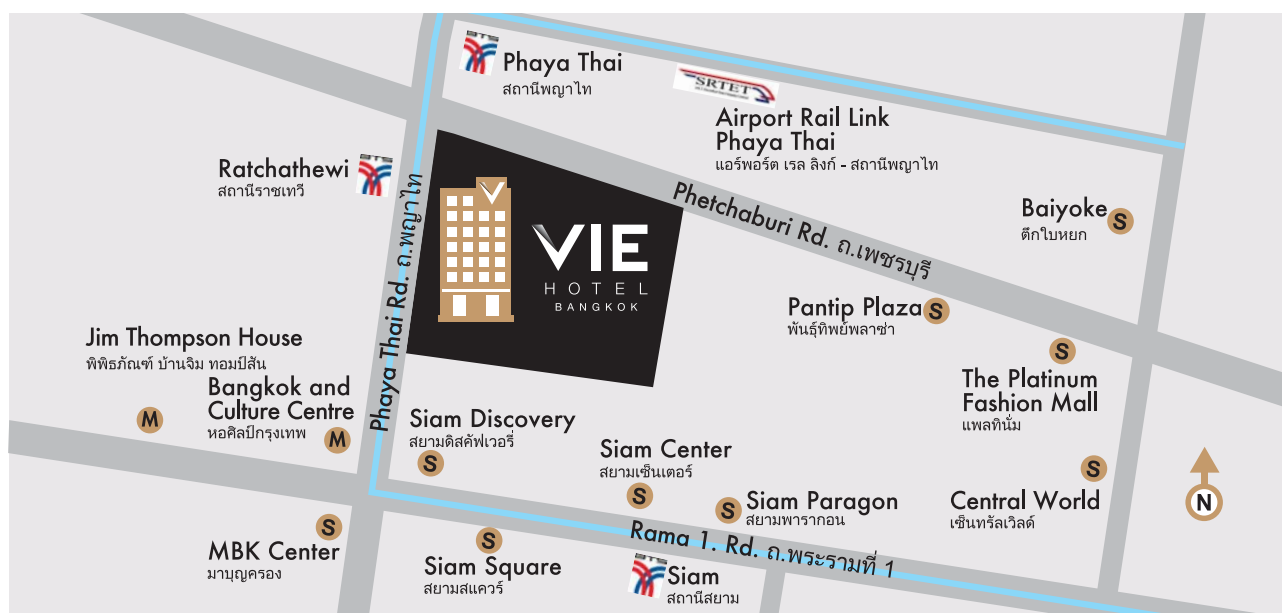
Enjoy morning gourmet coffee with fresh pastries and delectable Thai or Chinese set lunch menus. Discover our famed YTSB – Yellow Tail Sushi Bar and savor Afternoon Tea sets, themed coffee breaks, and an international buffet or cocktail dinner. We pride ourselves on providing our guests with customized and seamless services.





## Location

The convenient location of VIE Hotel Bangkok, MGallery Hotel Collection in the heart of Bangkok is ideal whether you come for business or pleasure. Next to the BTS Skytrain Ratchathewi station (exit 2), it is only four minutes' ride to the Airport Link which takes you to Suvarnabhumi International Airport. It is also just a 3-minute walk to Siam Centre, Siam Discovery, Siam Paragon and MBK, with hundreds of shops to explore, and internationally respected hospitals are located within 3 – 4 Skytrain stops from the hotel (Phayathai 1, Bumrungrad International Hospital, Rajavithi Hospital and BNH).



### VIE Hotel Bangkok, MGallery Hotel Collection

117/39-40 Phaya Thai Road, BTS Ratchathewi, Bangkok - Thailand 10400

Tel. +66 (0) 2309 3939 E-mail: H6469-SL1@accor.com

[www.viehotelbangkok.com](http://www.viehotelbangkok.com) | [www.facebook.com/viehotelbangkok](https://www.facebook.com/viehotelbangkok)