



DELUXE SUITE



SOFITEL  
HOTELS & RESORTS





BEDROOM OF DELUXE SUITE

DELUXE SUITE

## DELUXE SUITE

---

Your experience will be elevated to our 50th floor 64 sqm Deluxe Suite with only the finest touches, like Hermès – Eau d'Orange Verte bath amenities and guaranteed top floor views of Melbourne's park lands.

---

64m<sup>2</sup> / 689 Sq. Ft.

**KING AVAILABLE**

*Highest views of Melbourne Park lands*

---

**50<sup>th</sup>** Floor and above / Guarantee 150m above street level



# AMENITIES

## ROOMS

- Private mini bar for late night snacks
- Lounge area for entertaining 4 people
- Guest Tablet with 24-hour in-room dining, and updated city information
  - Nespresso coffee machine with pods & tea
- Two x 42-inch LCD TV with CNN, BBC News, Movie Channels and more
  - Wardrobe, iron, and ironing board & in-room Safe

## BED & BATHROOM

- Hermès – Eau d'Orange Verte amenities
- Tip-toe into your Sofitel slippers and bathrobe
- Sofitel MyBed with a tailored pillow menu for the perfect night sleep
  - Authentic European style shower over bath

## SERVICE WITH SAVOIR-FAIRE

- With our compliments high-speed WiFi Internet
- Complimentary access to all the newspapers around the world through our guest tablets
  - Exclusive access to 35th floor Club Sofitel with executive breakfasts, pre-dinner drinks & canapés and meeting facilities





SEPARATE LIVING AREA IN DELUXE SUITE



## HERMÈS – EAU D'ORANGE VERTE

---

Fragrance has been a part of the history of the house of Hermès since the 1930s. In the library of Hermès perfumes, every creation tells a story, opens up an imaginary world. As both artisan and artist, Hermès demonstrates through its creations the excellence of its craftsmanship and style; audacious and harmonious, timeless and elegant.

*“We thought you deserved better, so we went for the best of the best, and ‘Oui’ – of course, it’s made in France. Hermès – Eau d’Orange Verte bath amenities is the epitome of Hermès, standing out by its distinctive bright and green freshness of orange combined with woody undertones..”*

Mr. Clive Scott, General Manager Sofitel Melbourne On Collins

---





BATHROOM IN DELUXE SUITE



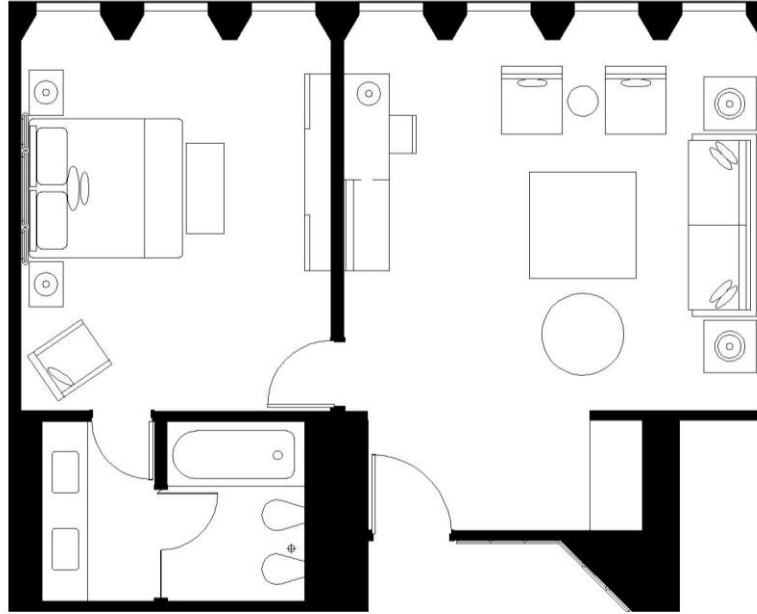
# ROOM LIST AND CONFIGURATIONS

ROOM	NO. ROOMS	SIZE (ft)	BEDDING	EXTRA	COT	MAX. PEOPLE	CORNER VIEW	VIEW
Classic King Room	148	36	King	Rollaway	Yes	3	No	City/Park/MCG
Classic Twin Room	21	36	2 x Single	Rollaway	Yes	3	No	City/Park/MCG
Superior Room	77	36	King	Rollaway	Yes	3	No	Bay
Luxury King Room	40	40	King	Rollaway	Yes	3	Yes	Bay/City
Luxury Club Room	30	36	King	Rollaway	Yes	3	No	City/Park/MCG
Junior Suite	14	50	King	Rollaway	Yes	3	Yes	Bay/MCG
Prestige Suite	23	77	King	Double Duvan	Yes	3	Yes	Bay/City/Park
Deluxe Suite	6	64	King	No	Yes	2	No	Bay/City/Park
Ambassador Suite	2	64	King	No	Yes	2	Yes	Bay/MCG
Opera Suite	1	146	King	No	Yes	2	Yes	Bay/City
Imperial Suite	1	157	King	No	Yes	2	Yes	Park/MCG



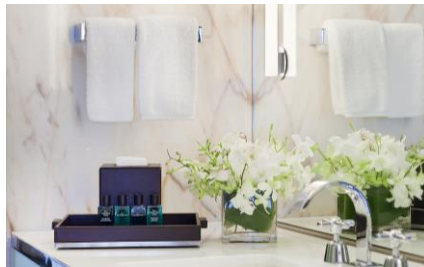
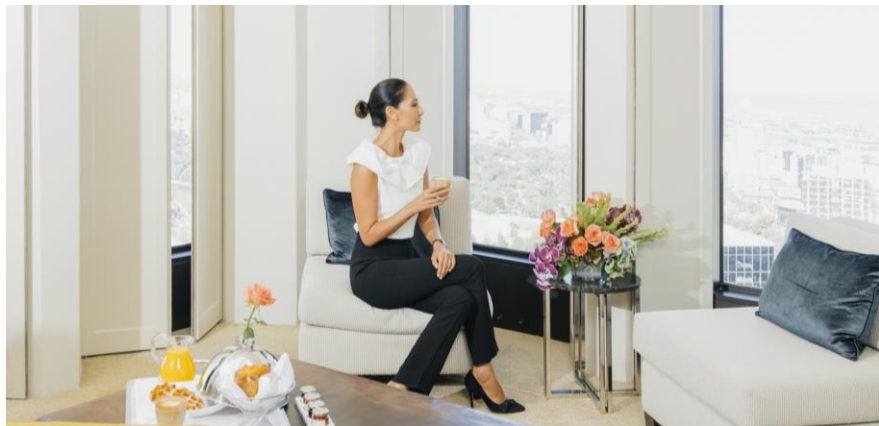


# FLOOR PLAN



DELUXE SUITE

# PHOTO GALLERY



AWARDS



BEST LUXURY  
HOTEL IN AUSTRALIA



BEST LUXURY  
HOTEL IN AUSTRALIA





ASK US ABOUT OUR CLUB SOFITEL UPGRADES





## Live the French way

There's character, then there's French charisma.  
Book your stay at [sofitel-melbourne.com.au](https://sofitel-melbourne.com.au)

**S O F I T E L**  
MELBOURNE ON COLLINS