



AMBASSADOR SUITE



SOFITEL
HOTELS & RESORTS





BEDROOM OF AMBASSADOR SUITE



AMBASSADOR SUITE

Be like a certain British spy and stay in ultimate luxury with 64 sqm of space, a chic dining room table seating 5 of your friends for pre-dinner drinks and canapés with only the finest, Hermès – Eau d'Orange Verte for your bath amenities.

64m² / 689 Sq. Ft.

KING AVAILABLE

Views overlooking MCG and Port Phillip Bay

50th Floor and above / Guarantee 150m above street level



AMENITIES

ROOMS

- Private mini bar for late night snacks
- Lounge area for entertaining 4 people
- Dining table for entertaining 6 people
- Guest Tablet with 24-hour in-room dining, and updated city information
 - Nespresso coffee machine with pods & tea
- 42-inch LCD TV with CNN, BBC News, Movie Channels and more
 - Wardrobe, iron, and ironing board & in-room Safe

BED & BATHROOM

- Hermès – Eau d'Orange Verte amenities
- Tip-toe into your Sofitel slippers and bathrobe
- Sofitel MyBed with a tailored pillow menu for the perfect night sleep
 - Authentic European style shower over bath

SERVICE WITH SAVOIR-FAIRE

- With our compliments high-speed WiFi Internet
- Complimentary access to all the newspapers around the world through our guest tablets
 - Exclusive access to 35th floor Club Sofitel with executive breakfasts, pre-dinner drinks & canapés and meeting facilities





SEPARATE LIVING AREA IN AMBASSADOR SUITE



HERMÈS – EAU D'ORANGE VERTE

Fragrance has been a part of the history of the house of Hermès since the 1930s. In the library of Hermès perfumes, every creation tells a story, opens up an imaginary world. As both artisan and artist, Hermès demonstrates through its creations the excellence of its craftsmanship and style; audacious and harmonious, timeless and elegant.

“We thought you deserved better, so we went for the best of the best, and ‘Oui’ – of course, it’s made in France. Hermès – Eau d’Orange Verte bath amenities is the epitome of Hermès, standing out by its distinctive bright and green freshness of orange combined with woody undertones..”

Mr. Clive Scott, General Manager Sofitel Melbourne On Collins





BATHROOM IN AMBASSADOR SUITE



ROOM LIST AND CONFIGURATIONS

ROOM	NO. ROOMS	SIZE (ft)	BEDDING	EXTRA	COT	MAX. PEOPLE	CORNER VIEW	VIEW
Classic King Room	148	36	King	Rollaway	Yes	3	No	City/Park/MCG
Classic Twin Room	21	36	2 x Single	Rollaway	Yes	3	No	City/Park/MCG
Superior Room	77	36	King	Rollaway	Yes	3	No	Bay
Luxury King Room	40	40	King	Rollaway	Yes	3	Yes	Bay/City
Luxury Club Room	30	36	King	Rollaway	Yes	3	No	City/Park/MCG
Junior Suite	14	50	King	Rollaway	Yes	3	Yes	Bay/MCG
Prestige Suite	23	77	King	Double Duvan	Yes	3	Yes	Bay/City/Park
Deluxe Suite	6	64	King	No	Yes	2	No	Bay/City/Park
Ambassador Suite	2	64	King	No	Yes	2	Yes	Bay/MCG
Opera Suite	1	146	King	No	Yes	2	Yes	Bay/City
Imperial Suite	1	157	King	No	Yes	2	Yes	Park/MCG



FLOOR PLAN

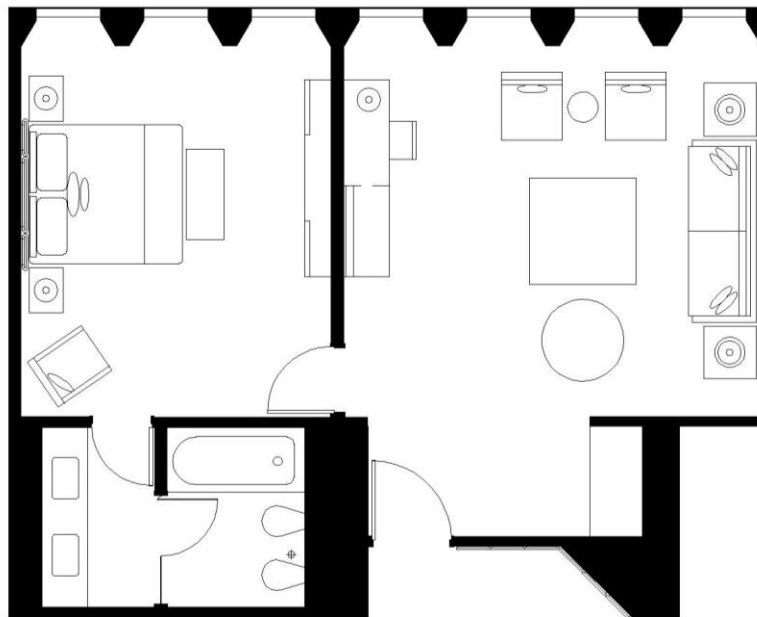


PHOTO GALLERY



AWARDS



BEST LUXURY
HOTEL IN AUSTRALIA



BEST LUXURY
HOTEL IN AUSTRALIA





BOOK A DINNER EXPERIENCE IN THE SKY AT NO35 RESTAURANT





Live the French way

There's character, then there's French charisma.
Book your stay at sofitel-melbourne.com.au

S O F I T E L
MELBOURNE ON COLLINS