

# PULLMAN DUBAI CREEK CITY CENTRE

PORT SAEED ROAD, BANIYAS STREET, PO BOX 61871 – DUBAI- UAE – T. +971 4 294 1222 – F. +971 4 295 4444 – H2022@ACCOR.COM  
PULLMANHOTELS.COM – ALL.ACCOR.COMPULLMANHOTELS.COM – ALL.ACCOR.COM



**pullman**  
HOTELS AND RESORTS

DUBAI CREEK CITY CENTRE

***Because travel and business go hand in hand,  
Pullman created the Co-Meeting concept.***

**9 MEETING ROOMS  
1000 sqm OF FLEXIBLE SPACE  
AMPLE PRE-FUNCTION AREA  
DEDICATED EVENTS MANAGER**



### **MEETINGS**

Global business nomads have access to the latest generation of videoconferencing equipment while leaving all the details to our dedicated team of support staff.

Located just minutes from Dubai International Airport, it is in a prime location for time-conscious business travellers.

### **WEDDINGS**

A wedding at Pullman Dubai Deira City Centre defines a new meaning in romantic style. The beautiful contemporary venues are ideal for your dream wedding.

Not just weddings, but bridal showers, bachelor parties and any other event linked to your big day. Pullman prolongs the pleasure with an array of wedding services designed to make you feel special.

### **CATERING SERVICES**

To keep hunger at bay during a day of back-to-back meetings in Dubai. To wow wedding guests with an exceptional spread of gourmet bites. Pullman's team of culinary maestros take care of the menu regardless of the event – from intimate banquets to week-long seminars.

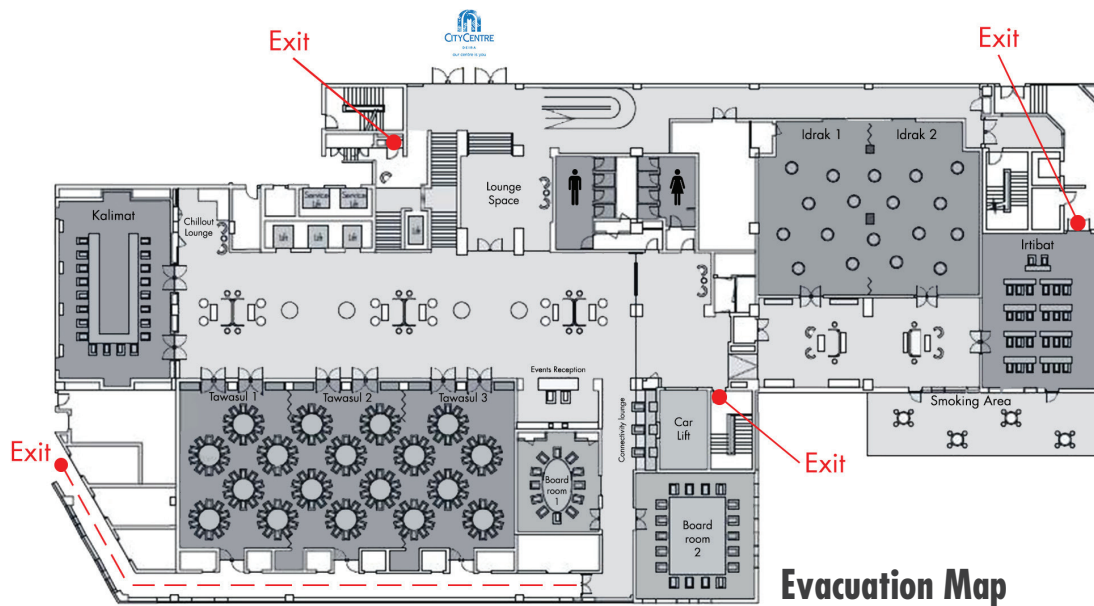
Executive chef, Dwayne Krisko, has designed a wide variety of menus suitable for any type of occasion.

### **CONNECTIVITY BY PULMAN**

- Complimentary high-speed Wi-Fi in the hotel.
- Dedicated IT Solutions Manager.
- State-of-the-art tele-conferencing facilities.
- Panoramic screens & high-tech equipment.
- Guaranteed confidentiality and security.

## CAPACITY OF THE MEETING ROOMS

ROOM NAME	SURFACE (m <sup>2</sup> )	HEIGHT (m)	BOARDROOM	U-SHAPE	CLASSROOM	THEATRE	COCKTAIL	BANQUET	CABARET
BOARD ROOM 1	32.40	3.50	14	-	-	-	-	-	-
BOARD ROOM 2	78.60	3.50	24	-	-	-	-	-	-
KALIMAT	113.59	3.00	30	26	40	90	60	50	25
TAWASUL 1	91.20	4.00	24	22	32	80	50	50	30
TAWASUL 2	91.20	4.00	24	22	32	80	50	50	30
TAWASUL 3	91.20	4.00	24	22	32	80	50	50	30
TAWASUL 1+2+3	273.60	4.00	-	70*	120*	200	200	170*	90*-130
IDRAK 1	104.12	3.00	24	20	30	70	50	40	25
IDRAK 2	91.88	3.00	24	20	30	70	50	40	25
IDRAK 1+2	196.00	3.00	-	-	60	120	100	80	60
IRTIBAT	95.76	3.00	24	22-30	32	70	50	50	25-30





DUBAI CREEK CITY CENTRE

## HOTEL ACCESS

### BY PLANE:

Dubai International Airport (DXB) is 10 minutes drive

Al Maktoum Airport is 50 minutes drive

### BY ROAD :

Exit into the Airport Road. Drive over the bridge and continue until you reach the Garhoud junction. Take the Deira lane and follow the signs leading to Deira City Centre Mall. The hotel is directly connected to this mall

### BY METRO:

Red line. Deira City Centre station. 2-minute walk through the mall.

### PULLMAN DUBAI CREEK CITY CENTRE

Baniyas Road, Deira City Centre, P.O. Box 61871 Dubai, United Arab Emirates

T. +971 (0)4 294 1222 - F. +971 (0)4 295 4444 - E. H2022@accor.com



JOIN OUR LOYALTY PROGRAM  
 WORLD OF **ALL.COM**