



Novotel Phuket Phokeethra with 7 dedicated meeting spaces, can accommodate up to 850 delegates.

- A 1,300 m² multi-purpose and modular meeting rooms with a 950 m² splendid grand ballroom with large pre-function area
- Meeting at Novotel expertise and our attentive staffs ensure the success and quality of your event whether for conference, board meeting, banquet, upscale exhibition or product launching.

- **Standard equipment available**
- General equipment**
- > Podium
 - > Slide projector
 - > Overhead projector
 - > High speed transmission line
 - > Internet connection (Wifi, Wired)
 - > Soundproof areas for greater comfort
 - > Individually controlled air conditioning meeting rooms

- Business Services in hotel**
- > Concierge
 - > Webcorner
 - > Restaurant
 - > Fitness Center
 - > Complimentary car & motorbike parking



• **Novotel Phuket Phokeethra offers 7 meeting rooms with flexible layouts for up to 850 attendees**

7 MEETING ROOMS	TOTAL SQM	LENGTH (M)	WIDTH (M)	HIGHT (M)	CLASS ROOM	THEATRE	U-SHAPE	BOARD ROOM	BANQUET BUFFET	COCKTAIL RECEPTION
BALLROOM 1	511	29.4	17.4	4.7	252	384	210	-	280	460
BALLROOM 2	424	24.4	17.4	4.7	189	304	162	-	240	380
GRAND BALLROOM	935	53.8	34.8	4.7	504	736	-	-	560	850
BONITA 1 (2 ND FLOOR)	126	15.6	8.1	2.3	48	96	36	40	80	120
BONITA 2 (2 ND FLOOR)	54	7.6	7.1	2.3	24	35	16	20	32	-
BONITA 3 (2 ND FLOOR)	54	7.6	7.1	2.3	24	35	16	20	32	-
BONITA 4 (3 RD FLOOR)	235	13.6	17.3	2.3	120	206	-	-	120	180



This hotel is a participating contributor to the global Plant for the Planet tree-planting scheme. Over the past 6 years, by reusing the towels in your room, you have helped us to have over 4 million trees planted worldwide.

Organize your meeting online at novotel.com/meetings or call your hotel Contact



- ACCESS & TRAVEL INFORMATION**
- **By plane:** Phuket International Airport (34 km)
 - **By car:** Thepkasattri Road (Route no. 402)
 - **Currency:** Thai Baht (THB)
 - **Time Zone:** GMT +7



NOVOTEL PHUKET PHOKEETHRA

40/5 Chanajaroen Road • Tambon Talad Yai • Amphur Muang • Phuket • 83000 • Thailand
Phone: +66 (0) 76 397 797 • Fax: +66 (0) 76 397 700

h9932@accor.com • novotel.com/9932 [novotelphuketphokeethra](https://novotelphuketphokeethra.com)



MEETING
AT **NOVOTEL**

NOVOTEL PHUKET
PHOKEETHRA

MEET WITH
SUCCESS
AT NOVOTEL

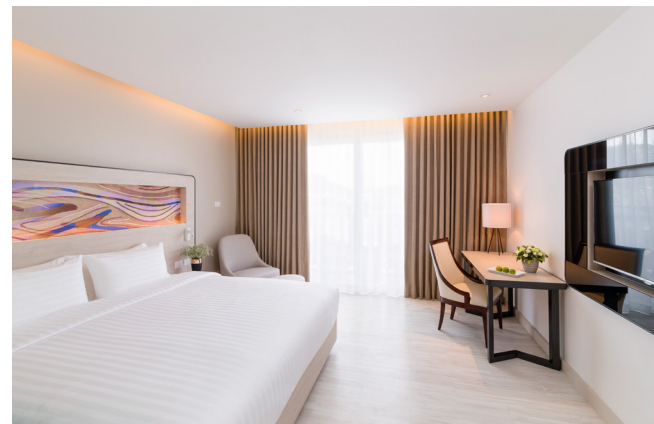


On-demand meeting rooms and business facilities



MEET WITH SUCCESS AT NOVOTEL

Allow Novotel Phuket Phokeethra meeting specialists to provide expert guidance for your conferences, meetings and seminars up to 850 persons. 1,300 m² modular upscale facilities with high tech equipment in contemporary environment. Wi-Fi, extra breakout area. Our all-inclusive packages can be tailored made to meet perfectly your needs and budget: From creative coffee breaks and cocktails, private lunch or international buffet at AMOR restaurant to original activities or unique settings.



TAILOR-MADE COMFORT

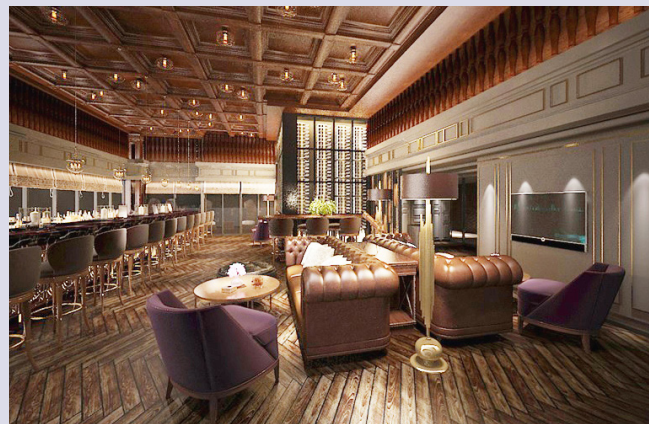
The hotel features 180 rooms and suites with latest Novotel's stylish contemporary designs and comfort.

From free WiFi, LED TV with international channels, fridge, tea & coffee facilities, safety box, each room is designed to ensure guest's stay is both restful and productive.



ENTERTAIN YOUR PALATE AT NOVOTEL PHUKET PHOKEETHRA

Discover the thrilling simplicity of flavourful contemporary cuisine. Inventive yet well-balanced dishes for delightful meals to enjoy at the hotel restaurant in a friendly stylish setting, enjoy the inspiring international buffet at AMOR restaurant, afternoon tea and wide range of refreshment at LUA Lobby Bar or a relaxing cocktail at ESTRELA Sky Lounge.



AMOR is an elegant all-day dining restaurant offering an international buffet and à la carte menu featuring the best of Western and Asian cuisines. Diners can enjoy enticing daily lunch and dinner buffets and a fabulous Sunday Brunch with live cooking stations.

LUA is a contemporary lobby lounge and the perfect venue for an afternoon coffee or evening cocktail, casual business meeting, or get together with friends.

ESTRELA Sky Lounge is located on the hotel's 17 -18th floor. With a spectacular panoramic view of Phuket Town, the bay and the mountains, it's a popular rendezvous for who come to enjoy creative tapas, signature cocktails, and fine wines.



FIND YOUR BALANCE AT NOVOTEL PHUKET PHOKEETHRA

Revitalize with a rewarding workout at In Balance Fitness. Our modern fitness centre features technologically advanced cardio and weight training equipment so you can maintain your healthy lifestyle while away from home. For enhanced wellbeing, you can relax at the outdoor swimming pool or retreat into the tranquility of Leticia Spa which offers an extensive menu of spa and beauty treatments.



OUTDOOR ACTIVITIES AND ENTERTAINMENT

At walking distance, you will discover the heart of commercial and Sino-Portuguese cultural district, shopping, art galleries, cultural sites and local markets, just a few minutes from beach.

A five-minute drive to Thalang Road and Surin Circle Clock Tower in Phuket Old Town and 40 minutes from Phuket International Airport.